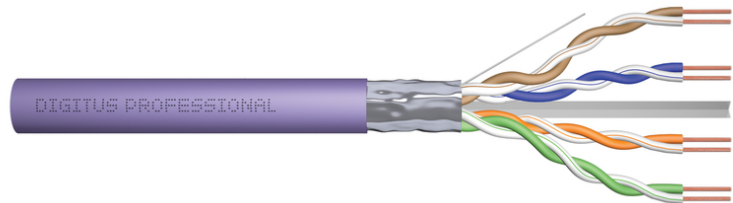


DIGITUS Cat.6 F/UTP installation cable, 500 m, simplex, Cca

DK-1625-VH-5
EAN 4016032442035



CAT 6 F-UTP installation cable, 250 MHz Cca (EN 50575), AWG 23/1, 500 m drum, sx, purple

The Digitus® Professional Cat.6 F/UTP installation cable is characterized by the following cable construction 4x2x AWG23/1 and reaches a transmission frequency up to 250 MHz. The halogen free cable jacket is conform to the standard IEC 60332-3-24, FRNC-C, LSZH-1 and CPR Euro class Cca. The cable is suitable for building structured cabling in the secondary and tertiary area. Compliant with the following standards ISO/IEC 11801, DIN EN 50173, DIN EN 50288-5-1.

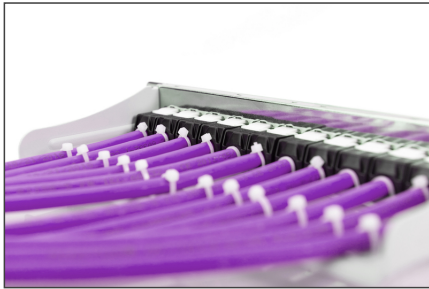
Future-oriented standards and high-end quality for your network.

- Physical properties:
- Conductor: Bare annealed copper, solid AWG 23/1
- Insulation: HD-PE (High Density Polyethylene)
- Total number of insulated conductors: 8, twisted in 4 pairs
- Color code: Blue-white, orange-white, green-white, brown-white
- Individual pair shield: None
- Overall shielding: Aluminum foil, providing 100% coverage, drain wire
- Outer sheath: Eca to B2ca acc. to EN 50575; LSZH
- Outer sheath diameter (nominal): 0.5 mm (Eca); 0,6 mm (Dca); 0,8 mm (Cca); 0,08 mm (B2ca)
- Outer sheath color: Purple
- Mechanical properties:
- Tensile loading: 150N max.
- Dynamic bending radius: 8x AD mm min.
- Static bending radius: 4x AD mm min.

- Shipping- and storage temperature range: -20 °C up to +60 °C
- Operating temperature range: -20 °C up to +75 °C
- Installation temperature range: 0 °C up to +50 °C
- Overall diameter Simplex (nominal): 7.0 (Eca); 7,2 mm (Dca); 7,6 mm (Cca); 7,6 mm (B2ca)
- Weight (kg/km): 46 kg (Eca); 47 kg (Dca); 48,5 kg (Cca); 48,5 kg (B2ca)
- Electrical properties:
- Impedance: 100±5 Ohm @ 1-250 MHz
- Capacitance: 45 pF/m nominal @ 800 Hz
- Capacitance unbalance (pair-ground): 1.5 pF/m max. @ 1 KHz
- Insulation resistance: 5 GOhm x km min.
- DC loop resistance: 147 Ohm/km max. (2% max. resistance unbalance)
- Voltage resistance: 72 Vdc max.
- Coupling attenuation: 40 dB
- Signal propagation delay: 535 nS/100 m max.
- Propagation delay: 20 nS/100 m max.
- Separating class: „c“ acc. to EN 50174-2
- NVP: 69%
- Assortment: Twisted Pair Installation Cables
- Category: CAT 6
- Shielding: F-UTP, foil shielding
- CPR: Cca
- Length: 500 m
- Color: violet
- Jacket: LSOH
- Structure: 4 x 2 AWG 23/1, solid twisted pair

Logistics						
	Number (pcs)	Weight (kg)	Depth (cm)	Width (cm)	Height (cm)	cm ³
Packaging Unit Carton	1	28.50	50.00	50.00	22.00	55.00
Packaging Unit Inside	1	28.50	0.00	0.00	0.00	0.00
Packaging Unit Single	1	28.50	50.00	50.00	22.00	55.00
Net single without Packaging	0	27.82	50.00	50.00	22.00	55.00

More images:



DIGITUS

AWG 23/1 250 MHz 1 Gbit Ethernet CAT 6 cat. eqv.

20°/75° LSZH Cca CPU class

CAT 6 F/UTP Installation Cable, 500 m, Simplex, C_{ca}

DIGITUS

DK-1625-VH-S // CAT 6 F/UTP Installation Cable, 500 m, Simplex, C_{ca}

Anwendungsbeispiel
Example of use

DIGITUS

DK-1625-VH-S // CAT 6 F/UTP Installation Cable, 500 m, Simplex, C_{ca}

Kabelquerschnitt
Cable cross section

Labels: Außenmantel Outer jacket, Geseamtuchung Total shield, Cu-Draht Cu-Wire, Adresspaar Twisted pair

DIGITUS

Produktdaten Produkt-Information		Physikalische Spezifikationen Physical Properties	
Bezeichnung / Part Number	DK-1625-VH-S (DK-1625-VH-S) (DK-1625-VH-S)	Standard / Standard	ISO/IEC 11801 Class D, Cat 6
Material / Material	LSZH (Low Smoke Zero Halogen)	Leistung / Power	1000 MHz (up to 100 m), 250 MHz (up to 500 m)
Leistung / Power	1000 MHz (up to 100 m), 250 MHz (up to 500 m)	Temperatur / Temperature	-40°C to +75°C
Temperatur / Temperature	-40°C to +75°C	Bestandteile / Components	1x 500 m Cable, 1x RJ45 Patch Panel, 1x RJ45 Patch Cord
Bestandteile / Components	1x 500 m Cable, 1x RJ45 Patch Panel, 1x RJ45 Patch Cord	Abmessungen / Dimensions	10.5 mm (outer diameter), 5.5 mm (inner diameter)
Abmessungen / Dimensions	10.5 mm (outer diameter), 5.5 mm (inner diameter)	Umwelt / Environment	RoHS compliant, REACH compliant

DIGITUS

Leistungsparameter Transmission Properties

MHz	AT	MT	PL MT	AL	PL AL	PL	SL/EXT	PL/EXT
1	12.1	16.2	17.8	12.1	16.2	20	16	16
10	13.4	17.5	19.1	13.4	17.5	21	16	16
100	15.0	18.2	19.8	15.0	18.2	23	16	16
1000	16.5	19.7	21.3	16.5	19.7	25	16	16
2000	17.5	20.7	22.3	17.5	20.7	26	16	16
3000	18.0	21.2	22.8	18.0	21.2	27	16	16
4000	18.5	21.7	23.3	18.5	21.7	28	16	16
5000	19.0	22.2	23.8	19.0	22.2	29	16	16

Einheitswerte in 100 MHz-Schritten. Daten sind typisch.

DIGITUS

DIGITUS

CEP-Bestimmung: B2_{ca} (Säure hoch), C_{ca} (Hoch), D_{ca} (Metall), E_{ca} (Low)

Leistungsebenen (Power Levels): 1+, 3

Adressen (Addresses): s1a, d1, a1

Leistungsparameter (Performance): s, d, a