

DIGITUS Line-Interactive UPS, 1500 VA/900 W

DN-170075

EAN 4016032441373



Line-Interactive UPS, 1500VA/900W 12V/9Ah x2 battery, 4x CEE 7/7, USB, RS232, RJ45, LCD

The DIGITUS® Line-Interactive UPS come with a compact size and an excellent microprocessor control, which guarantees high reliability. With an user friendly operation they provide high performance protection for your business and office computer systems against data loss and damage. Features like overload-, discharge and overcharge protection, cold start functions and energy saving features, as well as an acoustic alarm system are just a few advantages of the DIGITUS® Line-Interactive UPS units.

High performance protection for your business and office computer systems against data loss and damage

- Excellent micro process management guarantees a high reliability in case of electricity failure
- Auto restart while AC is recovering
- Cold start function
- Connection Type: 4x safety outlets, 2x RJ45, 1x RS232, 1x USB 2.0 type B
- Input voltage: 230 VAC
- Voltage range: 162-290 VAC
- Frequency range: 50 Hz (auto sensing)
- Output voltage: 230 VAC \pm 10%

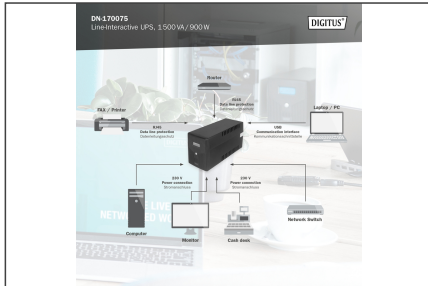
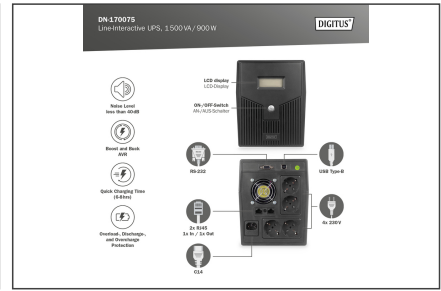
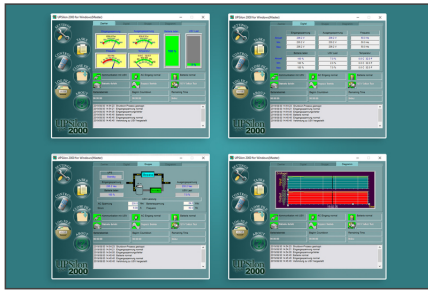
- AC voltage regulation (battery mode): 10%
- Capacity: 1500 VA/ 900 W
- Frequency range (battery mode): 50 Hz \pm 1%
- Typical transfer time: 2-6 ms
- Battery: 12V/9Ah x 2
- Typical recharge time: 6-8 hours to recover 90% of capacity
- Alarm sounds: Battery mode (sounding every 10 sec.), low battery (sounding every second), overload (sounding every 0.5 seconds), fault (continuously sounding)
- Humidity: 0-95% RH @ 0 °C to +40 °C (non condensing)
- Noise level: Less than 40 dB
- With overload-, discharge-, and overcharge protection
- Boost and buck AVR for voltage stabilization
- LCD display
- Dimensions (H x W x D): 198 x 158 x 380 mm
- Weight: 10.1 kg

Attributes

- El. snaga: 1500VA – 3000VA
- Tehnologija: Linijski interaktivno
- Ugrađivanje: Radna površina
- Utikač: CEE7/7

Logistics						
	Number (pcs)	Weight (kg)	Depth (cm)	Width (cm)	Height (cm)	cm ³
Packaging Unit Carton	1	11.00	45.20	22.20	29.50	29,601.50
Packaging Unit Inside	1	11.00	44.20	21.20	28.00	26,237.10
Packaging Unit Single	1	11.00	44.20	21.20	28.00	26,237.10
Net single without Packaging	0	10.10	38.00	15.80	19.80	11,887.90

More images:



Safety notes

- The UPS system must be absolutely dry before it is installed. Please allow the UPS system to acclimatize for at least two hours to adapt to the environment.
- Protect the UPS system from water or moisture.
- Avoid direct sunlight or installation near heat sources.
- Do not block any ventilation openings in the housing.
- Do not connect any devices or appliances that would overload the system.
- Lay cables so that nobody can step on them or trip over them.
- Do not connect any household appliances to the output sockets of the UPS system.
- Only connect the UPS system to an earthed and easily accessible socket.
- Only use VDE-tested, CE-marked mains connection cables at the input and outputs.
- Never disconnect the mains connection cable during operation as this would cancel the protective earthing of the UPS system and all connected loads.
- The UPS system has its own internal power source. The output sockets or output terminals of the UPS system can be energized even if the UPS system is not connected to the building cabling.
- To switch off the UPS system completely, first press the OFF/Enter button to disconnect the mains.
- Caution - Risk of electric shock. Even after disconnecting the device from the mains, the components inside the UPS system are still connected to the battery. There is a risk of electric shock.
- Only persons who are sufficiently familiar with batteries and the necessary safety precautions may replace batteries and monitor operation.
- Caution - Risk of electric shock. The battery circuit is not isolated from the input voltage. Dangerous voltages can occur between the battery terminals and the ground. Ensure that no voltage is present before touching!
- When replacing the batteries, install the same number and type of batteries.
- Do not open or destroy batteries. Leaking electrolyte can injure the skin and eyes and may be toxic.
- The appliance may only be opened and repaired by a trained specialist.

EU responsible person

EU based economic operator ensuring the product complies with the required regulations.

ASSMANN Electronic GmbH
Auf dem Schöffel 3
Lüdenscheid, Germany
<https://www.assmann.com>
info@assmann.com