

DIGITUS Cable brush strip for 483 mm (19") cabinets

DN-97660
EAN 4016032430599



WMA cable manager 1U sa četkom za prolaz kab. SIVI brush size 27x423 mm, color grey (RAL 7035)

The 1U cable brush strips are attached to the 483 mm (19") profile rails. Integrated brushes protect the routed cables from damage. They are therefore particularly easy to lay in the rear or side of the enclosure to optimize cable management in your network or server enclosure.

- Robust sheet steel
- Opening with brush strip (HxW: 27x423 mm)

- incl. mounting material

Attributes

- Boja: svijetlo siva, RAL 7035
- Jedinice: 1
- Težina: 24 g

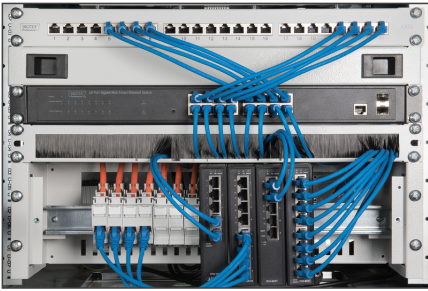
Package contents

- Installation set (screws, cage nuts, washers)

Logistics						
	Number (pcs)	Weight (kg)	Depth (cm)	Width (cm)	Height (cm)	cm ³
Packaging Unit Carton	50	10.50	30.50	23.00	51.00	35,776.50
Packaging Unit Inside	1	0.21	23.30	49.50	5.50	6,343.42
Packaging Unit Single	1	0.21	2.30	49.50	5.50	626.18
Net single without Packaging	0	0.12	1.08	48.26	4.39	228.81

More images:



**Safety notes**

- When installing and using the accessory product for network cabinets, observe the respective safety instructions of the manufacturer or the cabinet system in which you want to use the accessory.

EU responsible person

EU based economic operator ensuring the product complies with the required regulations.

ASSMANN Electronic GmbH
Auf dem Schüffel 3
Lüdenscheid, Germany
<https://www.assmann.com>
info@assmann.com