

DIGITUS Keystone Housing for DIN-Rail mounting, IP20

AN-25186
EAN 4016032372981



DIN-Rail adapter for 1x Keystone Modules, IP20 labeling field, earthing spring, side cover

The Keystone Module is mounted in a Housing on a DIN-Rail. The distance of the DIN-Rail to the back plate of the cabinet should be about 10 mm. Up to 12 Keystone Modules can be installed in a row in the distribution panel. IP20 protection is guaranteed, when the Keystone Housing is mounted with site covers. The delivery does not contain Keystone Modules.

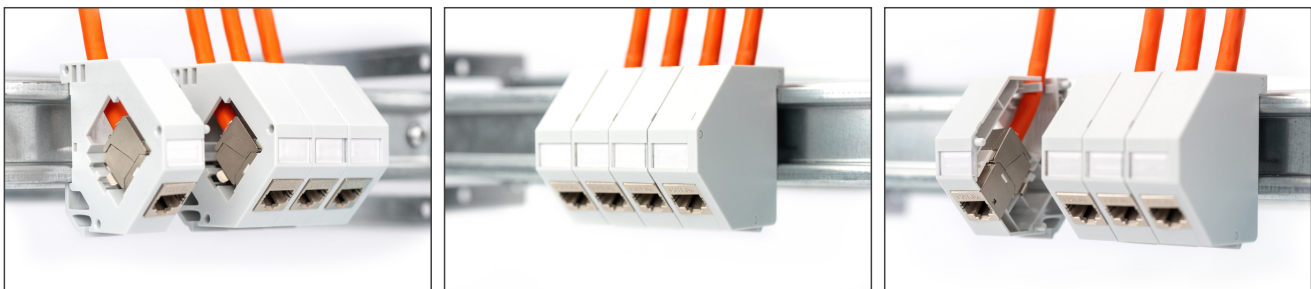
Fast installation and high functionality for every distribution cabinet

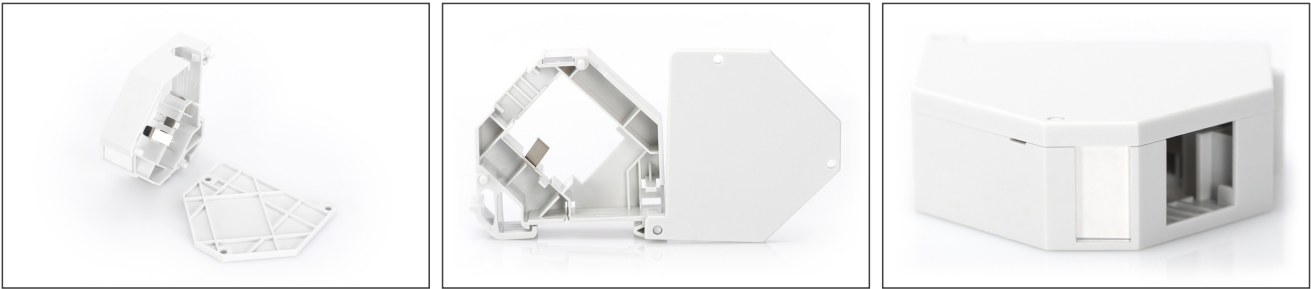
- Layout keystone entry: 45° vertical outlet

- Area of application: Electrical distribution box
- Norms: ISO/IEC 11801 3rd Ed., EN 50173-1, EIA/TIA 568-C
- General properties:
- Suitable for installation on DIN-Rail in electrical distribution boxes
- Integrated dust cover
- Lateral cover caps included
- Protection class IP20
- Technical properties:
- Housing material: ABS UL-94V-0
- Physical properties:
- Operation temperature: -20° C to +70 °C (ISO/IEC 11801, EN 50173-1, ANSI/TIA/EIA 568 C)

Logistics						
	Number (pcs)	Weight (kg)	Depth (cm)	Width (cm)	Height (cm)	cm ³
Packaging Unit Carton	300	8.40	50.00	37.00	28.00	51.80
Packaging Unit Inside	1	0.03	7.00	7.00	2.00	98.00
Packaging Unit Single	1	0.03	7.00	7.00	2.00	98.00
Net single without Packaging	0	0.00	0.00	0.00	0.00	0.00

More images:



**Safety notes**

- Observe the specifications of the raw cable manufacturer during installation

EU responsible person

EU based economic operator ensuring the product complies with the required regulations.

ASSMANN Electronic GmbH
Auf dem Schüffel 3
Lüdenscheid, Germany
<https://www.assmann.com>
info@assmann.com