

# DIGITUS Cat.6A U/UTP installation cable, 500 m, simplex, Eca

DK-1613-A-VH-5  
EAN 4016032344209



### CAT 6A U-UTP installation cable, 500 MHz Eca (EN 50575), AWG 23/1, 500 m drum, sx, blue

The Digitus Cat 6A U/UTP installation cable is designed for use in the structured data center and the building cabling according to ISO/IEC 11801, DIN EN 50288-11-1, DIN EN 50173, IEC 60332-1. The cable is perfectly suitable for the transmission of both analog and digital data and also supports POE and POE+.

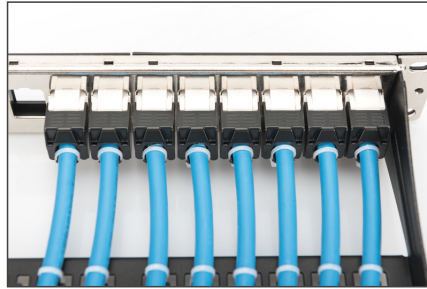
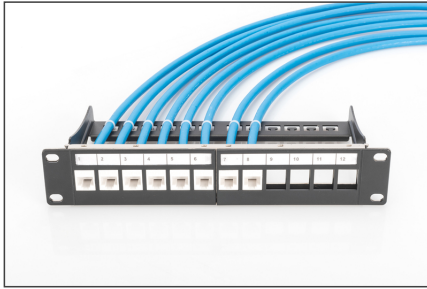
#### Future-oriented standards and high-end quality for your network.

- Physical properties:
- Conductor: Bare annealed copper, olid AWG 23/1
- Insulation: HD-PE (High Density Polyethylene)
- Total number of insulated conductors: 8, twisted in 4 pairs
- Color code: Blue-white, orange-white, green-white, brown-white
- Individual pair shield: None
- Overall shielding: None
- Outer sheath: Eca to B2ca acc. to EN 50575; LSZH
- Outer sheath diameter (nominal): 0,5 mm (Eca); 0,6 mm (Dca); 1,2 mm (Cca); 1,4 mm (B2ca)
- Outer sheath color: Light blue (RAL 5012)
- Mechanical properties:
- Tensile loading: 150N max.
- Dynamic bending radius: 8x AD mm min.
- Static bending radius: 4x AD mm min.
- Shipping- and storage temperature range: -20 °C up to +60 °C

- Operating temperature range: -20 °C up to +75 °C
- Installation temperature range: 0 °C up to +50 °C
- Overall diameter Simplex (nominal): 7,1 mm (Eca); 7,3 mm (Dca); 7,4 mm (Cca); 7,6 mm (B2ca)
- Weight (kg/km): 53 kg (Eca); 54 kg (Dca); 55 kg (Cca); 56 kg (B2ca)
- Electrical properties:
- Impedance: 100±5Ohm @ 1 - 600MHz
- Capacitance: 40 pF/m nominal @ 1 KHz
- Capacitance unbalance (pair-ground): 1.6 pF/m max. @ 1 KHz
- Insulation resistance: 5 GOhm x km min.
- DC loop resistance: 147 Ohm/km max. (2% max. resistance unbalance)
- Voltage resistance: 72 Vdc max.
- Coupling attenuation: CA-Type 2
- Signal propagation delay: 450 nS/100 m max.
- Propagation delay: 10 nS/100 m max.
- Separating class: "c" acc. to EN 50174-2
- NVP: 70%
- Assortment: Twisted Pair Installation Cables
- Category: CAT 6A
- Shielding: U-UTP, unshielded
- CPR: Eca
- Length: 500 m
- Color: light-blue
- Jacket: LSOH
- Structure: 4 x 2 AWG 23/1, solid twisted pair

| Logistics                    |              |             |            |            |             |       |
|------------------------------|--------------|-------------|------------|------------|-------------|-------|
|                              | Number (pcs) | Weight (kg) | Depth (cm) | Width (cm) | Height (cm) | cm³   |
| Packaging Unit Carton        | 1            | 27.50       | 50.00      | 50.00      | 22.00       | 55.00 |
| Packaging Unit Inside        | 1            | 27.50       | 50.00      | 50.00      | 22.00       | 55.00 |
| Packaging Unit Single        | 1            | 27.50       | 50.00      | 50.00      | 22.00       | 55.00 |
| Net single without Packaging | 0            | 0.00        | 0.00       | 0.00       | 0.00        | 0.00  |

More images:



**CAT 6<sub>A</sub> U/UTP Installation Cable, 500m, Simplex, E<sub>ca</sub>**

- AWG 23/1
- 500 MHz
- 10 Gbit Ethernet
- CAT 6<sub>A</sub> (see spec)
- 207/175°
- LSZH
- E<sub>ca</sub> (see spec)

**DK-1613-A-VH-S // CAT 6<sub>A</sub> U/UTP Installation Cable, 500m, Simplex, E<sub>ca</sub>**

Anwendungsbeispiel  
Example of use

**DK-1613-A-VH-S // CAT 6<sub>A</sub> U/UTP Installation Cable, 500m, Simplex, E<sub>ca</sub>**

Kabelquerschnitt  
Cable cross section

**Produktinformationen Product Information**

|                                  |   |
|----------------------------------|---|
| <b>Bestandteile</b>              | 500m CAT 6 U/UTP Installation Cable, 500m, Simplex, E <sub>ca</sub>   |
| <b>Technische Eigenschaften</b>  | <ul style="list-style-type: none"> <li>AWG: 23/1</li> <li>Bandbreite: 500 MHz</li> <li>Übertragungsraten: 10 Gbit Ethernet</li> <li>Material: LSZH</li> <li>Flammverhalten: E<sub>ca</sub></li> </ul> |
| <b>Mechanische Eigenschaften</b> | <ul style="list-style-type: none"> <li>Stärke: 100 N</li> <li>Streckgrenze: 100 N</li> <li>Bruchdehnung: 100%</li> <li>Streckverhalten: 100%</li> </ul>   |

**Leistungsmerkmale Transmission Properties**

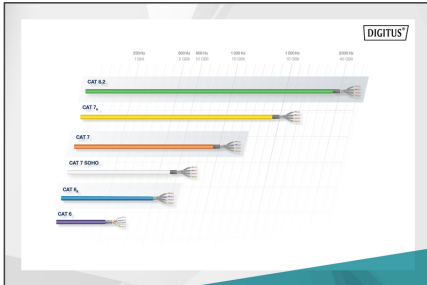
| Strecke | 100m | 150m | 200m | 250m | 300m | 350m | 400m | 450m | 500m |
|---------|------|------|------|------|------|------|------|------|------|
| 100m    | 1.0  | 1.0  | 1.0  | 1.0  | 1.0  | 1.0  | 1.0  | 1.0  | 1.0  |
| 150m    | 1.0  | 1.0  | 1.0  | 1.0  | 1.0  | 1.0  | 1.0  | 1.0  | 1.0  |
| 200m    | 1.0  | 1.0  | 1.0  | 1.0  | 1.0  | 1.0  | 1.0  | 1.0  | 1.0  |
| 250m    | 1.0  | 1.0  | 1.0  | 1.0  | 1.0  | 1.0  | 1.0  | 1.0  | 1.0  |
| 300m    | 1.0  | 1.0  | 1.0  | 1.0  | 1.0  | 1.0  | 1.0  | 1.0  | 1.0  |
| 350m    | 1.0  | 1.0  | 1.0  | 1.0  | 1.0  | 1.0  | 1.0  | 1.0  | 1.0  |
| 400m    | 1.0  | 1.0  | 1.0  | 1.0  | 1.0  | 1.0  | 1.0  | 1.0  | 1.0  |
| 450m    | 1.0  | 1.0  | 1.0  | 1.0  | 1.0  | 1.0  | 1.0  | 1.0  | 1.0  |
| 500m    | 1.0  | 1.0  | 1.0  | 1.0  | 1.0  | 1.0  | 1.0  | 1.0  | 1.0  |

intertek

RoHS Verified Certificate of Compliance Number: 10000000000000000000

Product Name: CAT 6 U/UTP Installation Cable, 500m, Simplex, E<sub>ca</sub>

Manufacturer: DIGITUS



**CEC-Bestimmungen**

|             |             |    |   |
|-------------|-------------|----|---|
| <b>B2ca</b> | Selbst hoch | 1+ | 1 |
| <b>Cca</b>  | Hoch        | 1+ | 1 |
| <b>Dca</b>  | Mittel      | 3  | 3 |
| <b>Eca</b>  | Gering      | 1  | 1 |

Material: Cca, s1a, d1, a1

