

DIGITUS Cat.6A U/UTP installation cable, 305 m, simplex, Eca

DK-1613-A-VH-305
EAN 4016032344100



CAT 6A U-UTP installation cable, 500 MHz Eca (EN 50575), AWG 23/1, 305 m drum, sx, blue

The Digitus® Cat.6A U/UTP installation cable is characterized by the following cable construction 4x2x AWG23/1 and reaches a transmission frequency up to 500 MHz. The halogen free cable jacket is conform to the standard IEC 60332-1, FRNC-B, LSZH-1 and CPR Euro class Eca. The cable is suitable for building structured cabling in the secondary and tertiary area. Compliant with the following standards ISO/IEC 11801, DIN EN 50173, DIN EN 50288-11-1.

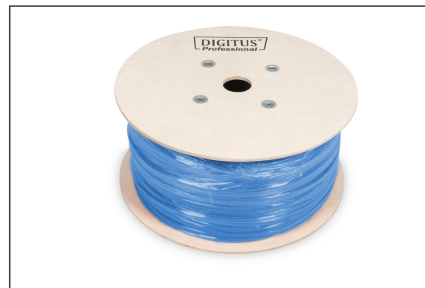
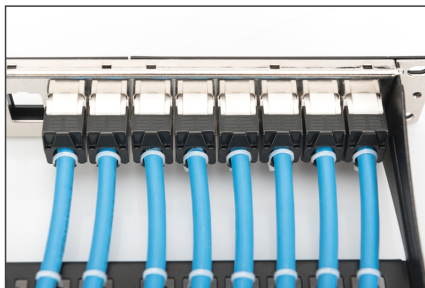
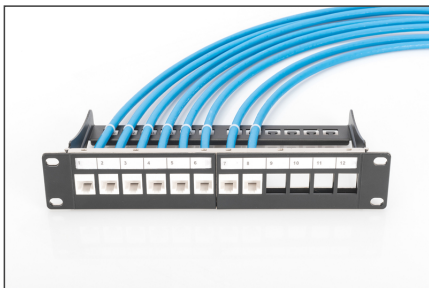
Future-oriented standards and high-end quality for your network.

- Physical properties:
- Conductor: Bare annealed copper, olid AWG 23/1
- System/s of AVCP: AVCP 3
- Insulation: HD-PE (High Density Polyethylene)
- Total number of insulated conductors: 8, twisted in 4 pairs
- Color code: Blue-white, orange-white, green-white, brown-white
- Individual pair shield: None
- Overall shielding: None
- Outer sheath: Eca to B2ca acc. to EN 50575; LSZH
- Outer sheath diameter (nominal): 0,5 mm (Eca); 0,6 mm (Dca); 1,2 mm (Cca); 1,4 mm (B2ca)
- Outer sheath color: Light blue (RAL 5012)
- Mechanical properties:
- Tensile loading: 150N max.
- Dynamic bending radius: 8x AD mm min.
- Static bending radius: 4x AD mm min.

- Shipping- and storage temperature range: -20 °C up to +60 °C
- Operating temperature range: -20 °C up to +75 °C
- Installation temperature range: 0 °C up to +50 °C
- Overall diameter Simplex (nominal): 7,1 mm (Eca); 7,3 mm (Dca); 7,4 mm (Cca); 7,6 mm (B2ca)
- Weight (kg/km): 53 kg (Eca); 54 kg (Dca); 55 kg (Cca); 56 kg (B2ca)
- Electrical properties:
- Impedance: 100±50hm @ 1 - 600MHz
- Capacitance: 40 pF/m nominal @ 1 KHz
- Capacitance unbalance (pair-ground): 1.6 pF/m max. @ 1 KHz
- Insulation resistance: 5 GOhm x km min.
- DC loop resistance: 147 Ohm/km max. (2% max. resistance unbalance)
- Voltage resistance: 72 Vdc max.
- Coupling attenuation: CA-Type 2
- Signal propagation delay: 450 nS/100 m max.
- Propagation delay: 10 nS/100 m max.
- Separating class: "c" acc. to EN 50174-2
- NVP: 70%
- Assortment: Twisted Pair Installation Cables
- Category: CAT 6A
- Shielding: U-UTP, unshielded
- CPR: Eca
- Length: 305 m
- Color: light-blue
- Jacket: LSOH
- Structure: 4 x 2 AWG 23/1, solid twisted pair

Logistics						
	Number (pcs)	Weight (kg)	Depth (cm)	Width (cm)	Height (cm)	cm³
Packaging Unit Carton	1	17.00	39.00	39.00	27.00	41.07
Packaging Unit Inside	1	17.00	39.00	39.00	27.00	41.07
Packaging Unit Single	1	17.00	39.00	39.00	27.00	41.07
Net single without Packaging	0	0.00	0.00	0.00	0.00	0.00

More images:



DIGITUS

AWG 23/1 | 500 MHz | 10 Gbit Ethernet | CAT 6a | LSZH | Eca | 207/75° | 207/75°

CAT 6a U/UTP Installation Cable, 305 m, Simplex, E_{ca}

DIGITUS

DK-1613-A-VH-305 // CAT 6a, U/UTP Installation Cable, 305 m, Simplex, E_{ca}

Anwendungsbeispiel
Example of use

DIG-93555

DIGITUS

DK-1613-A-VH-305 // CAT 6a, U/UTP Installation Cable, 305 m, Simplex, E_{ca}

Kabelquerschnitt
Cable cross-section

Adressierte Datenpaar
Co-Braid
Co-Rip
Adressierte Datenpaar

DIGITUS

Produktdaten / Product Information	Physikalische Spezifikationen / Physical Properties
<p>Bestellnummer / Order Number: DK-1613-A-VH-305 Produktname / Product Name: CAT 6a U/UTP Installation Cable, 305 m, Simplex, E_{ca} Hersteller / Manufacturer: DIGITUS Artikelnummer / Article Number: DK-1613-A-VH-305</p> <p>Material / Material: Polypropylen / Polypropylene Farbe / Color: Blau / Blue Länge / Length: 305 m Querschnitt / Cross-section: 16,0 mm Wahlstrom / Nominal current: 10 A Wahlspannung / Nominal voltage: 300 V Lebensdauer / Lifespan: 10 Jahre / 10 years</p>	<p>Norm / Norm: IEC 61084-2 Material / Material: Polypropylen / Polypropylene Farbe / Color: Blau / Blue Länge / Length: 305 m Querschnitt / Cross-section: 16,0 mm Wahlstrom / Nominal current: 10 A Wahlspannung / Nominal voltage: 300 V Lebensdauer / Lifespan: 10 Jahre / 10 years</p>

DIGITUS

Leistungsparameter / Transmission Properties

Strom / Current	AWG	PE	NEUT	AGP	PS/0/0/0	AL	SL/PE	PS/SL/PE
100	18	18	18	18	18	18	18	18
15	17	17	17	17	17	17	17	17
20	16	16	16	16	16	16	16	16
25	16	16	16	16	16	16	16	16
30	16	16	16	16	16	16	16	16
35	16	16	16	16	16	16	16	16
40	16	16	16	16	16	16	16	16
45	16	16	16	16	16	16	16	16
50	16	16	16	16	16	16	16	16

intertek

ITL Verifier Certificate of Compliance Number: 00000000000000000000

Product Name: CAT 6a U/UTP Installation Cable, 305 m, Simplex, E_{ca}

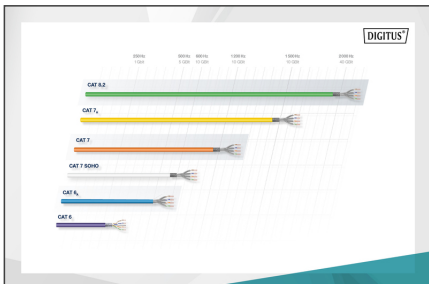
Model: DK-1613-A-VH-305

Manufacturer: DIGITUS

Standard: IEC 61084-2

Intermark: IEC 61084-2

Intertek: Intertek



DIGITUS

CEP Dimension	Drainagekonstruktion / Drainage structure	Leitungsanordnungsindex (AWG) / Conductor arrangement index (AWG)	Anzahl der verdrillten Paare / Number of twisted pairs	Zusammenfassung / Summary
B2,ca	Schale hoch / Shell high	1+	<ul style="list-style-type: none"> • Typisierung • Kapazitätserhöhung • Reduzierung des Querschnitts • Reduzierung des Preisniveaus 	<p>s P</p> <p>• Typisierung</p> <p>• Kapazitätserhöhung</p> <p>• Reduzierung des Querschnitts</p> <p>• Reduzierung des Preisniveaus</p>
C _{ca}	Misch / Mixed	3	<ul style="list-style-type: none"> • Typisierung • Kapazitätserhöhung • Reduzierung des Querschnitts • Reduzierung des Preisniveaus 	<p>d P</p> <p>• Typisierung</p> <p>• Kapazitätserhöhung</p> <p>• Reduzierung des Querschnitts</p> <p>• Reduzierung des Preisniveaus</p>
D _{ca}	Misch / Mixed	3	<ul style="list-style-type: none"> • Typisierung • Kapazitätserhöhung • Reduzierung des Querschnitts • Reduzierung des Preisniveaus 	<p>a P</p> <p>• Typisierung</p> <p>• Kapazitätserhöhung</p> <p>• Reduzierung des Querschnitts</p> <p>• Reduzierung des Preisniveaus</p>
E _{ca}	Gezogen / Drawn		<ul style="list-style-type: none"> • Typisierung • Kapazitätserhöhung • Reduzierung des Querschnitts • Reduzierung des Preisniveaus 	<p>a P</p> <p>• Typisierung</p> <p>• Kapazitätserhöhung</p> <p>• Reduzierung des Querschnitts</p> <p>• Reduzierung des Preisniveaus</p>

Standard: C_{ca} s1a d1 a1

