

DIGITUS Cat.6 U/UTP installation cable, 100 m, simplex, Eca

DK-1613-VH-1
EAN 4016032343653



CAT 6 U-UTP installation cable, 250 MHz Eca (EN 50575), AWG 23/1, 100m paper box, sx, pu

The Digitus Cat 6 U/UTP installation cable is designed for use in the structured data center and the building cabling according to ISO/IEC 11801, DIN EN 50288-6-1, DIN EN 50173, IEC 60332-1. The cable is perfectly suitable for the transmission of both analog and digital data and also supports POE. The shielding structure is composed of single shielded pairs with a tinned copper braid, which ensures excellent shielding and electrical values.

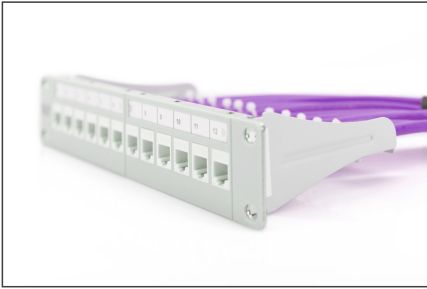
Future-oriented standards and high-end quality for your network.

- Physical properties:
- Conductor: Bare annealed copper, solid AWG 23/1
- System/s of AVCP: AVCP 3
- Insulation: HD-PE (High Density Polyethylene)
- Total number of insulated conductors: 8, twisted in 4 pairs
- Color code: Blue-white, orange-white, green-white, brown-white
- Individual pair shield: None
- Overall shielding: None
- Outer sheath: Eca to B2ca acc. to EN 50575; LSZH
- Outer sheath diameter (nominal): 0,5 mm (Eca); 0,6 mm (Dca); 1,0 mm (Cca); 1,0 mm (B2ca)
- Outer sheath color: Purple (RAL 4005)
- Mechanical properties:
- Tensile loading: 150N max.
- Dynamic bending radius: 8x AD mm min.
- Static bending radius: 4x AD mm min.

- Shipping- and storage temperature range: -20 °C up to +60 °C
- Operating temperature range: -20 °C up to +75 °C
- Installation temperature range: 0 °C up to +50 °C
- Overall diameter Simplex (nominal): 6,1 mm (Eca); 6,3 mm (Dca); 6,8 mm (Cca); 6,8 mm (B2ca)
- Weight (kg/km): 41 kg (Eca); 42 kg (Dca); 44 kg (Cca); 44 kg (B2ca)
- Electrical properties:
- Impedance: 100±50hm @ 1 - 250MHz
- Capacitance: 40 pF/m nominal @ 800 Hz
- Capacitance unbalance (pair-ground): 1.5 pF/m max. @ 1 KHz
- Insulation resistance: 5 GOhm x km min.
- DC loop resistance: 147 Ohm/km max. (2% max. resistance unbalance)
- Voltage resistance: 72 Vdc max.
- Coupling attenuation: CA-Type 3
- Signal propagation delay: 535 nS/100 m max.
- Propagation delay: 20 nS/100 m max.
- Separating class: „b" gem. EN 50174-2
- NVP: 69%
- Assortment: Twisted Pair Installation Cables
- Category: CAT 6
- Shielding: U-UTP, unshielded
- CPR: Eca
- Length: 100 m
- Color: violet
- Jacket: LSOH
- Structure: 4 x 2 AWG 23/1, solid twisted pair

Logistics						
	Number (pcs)	Weight (kg)	Depth (cm)	Width (cm)	Height (cm)	cm ³
Packaging Unit Carton	1	4.00	31.00	30.50	12.00	11.35
Packaging Unit Inside	1	4.00	10.00	28.00	28.00	7.84
Packaging Unit Single	1	4.00	10.00	28.00	28.00	7.84
Net single without Packaging	0	0.00	0.00	0.00	0.00	0.00

More images:

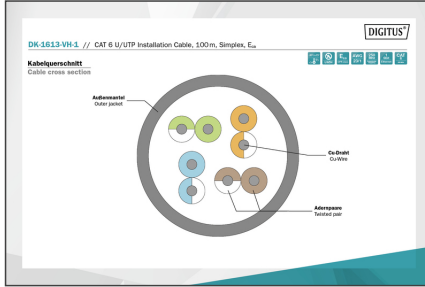


CAT 6 U/UTP Installation Cable, 100 m, Simplex, E_{ca}

- AWG 23/1
- 250 MHz
- 1 Gbit Ethernet
- CAT 6
- 20°/± 75°
- LSZH
- E_{ca} class
- CPR class

DK-1613-VH-1 // CAT 6 U/UTP Installation Cable, 100m, Simplex, E_{ca}

Anwendungsbeispiel
Example of use



Produktinformation Product Information

Herstellername: HART (China) Simplex Netz, Kabel Hersteller	Hersteller: HART	Normenkonformität: EN 50173-1, EN 50173-2, EN 50575-2-21
Artikelnummer: DK-1613-VH-1 (100m) (23 AWG) (23/1) (250 MHz) (1 Gbit Ethernet) (E _{ca}) (LSZH)	Artikelnummer: DK-1613-VH-1	Normenkonformität: EN 50173-1, EN 50173-2, EN 50575-2-21
Normen-Nr.: EN 50173-1 (2001) EN 50173-2 (2001) EN 50575-2-21 (2010)	Normen-Nr.: EN 50173-1 (2001) EN 50173-2 (2001) EN 50575-2-21 (2010)	Normenkonformität: EN 50173-1, EN 50173-2, EN 50575-2-21

Elektrische Eigenschaften Electrical Properties

Standard-Beschreibung: 23 AWG (23/1) (250 MHz) (1 Gbit Ethernet) (E _{ca}) (LSZH)	Standard-Beschreibung: 23 AWG (23/1) (250 MHz) (1 Gbit Ethernet) (E _{ca}) (LSZH)
Nennleistung: 250 W	Nennleistung: 250 W
Impedanz: 100 Ω	Impedanz: 100 Ω
Abdrehverlust: 0,1 dB/100m	Abdrehverlust: 0,1 dB/100m
Reflexionskoeffizient: $S_{11} \leq -20\text{ dB}$	Reflexionskoeffizient: $S_{11} \leq -20\text{ dB}$
Wellenlaufzeit: 198 ns	Wellenlaufzeit: 198 ns

Mechanische Eigenschaften Mechanical Properties

Standard-Beschreibung: 23 AWG (23/1) (250 MHz) (1 Gbit Ethernet) (E _{ca}) (LSZH)	Standard-Beschreibung: 23 AWG (23/1) (250 MHz) (1 Gbit Ethernet) (E _{ca}) (LSZH)
Nennleistung: 250 W	Nennleistung: 250 W
Impedanz: 100 Ω	Impedanz: 100 Ω
Abdrehverlust: 0,1 dB/100m	Abdrehverlust: 0,1 dB/100m
Reflexionskoeffizient: $S_{11} \leq -20\text{ dB}$	Reflexionskoeffizient: $S_{11} \leq -20\text{ dB}$
Wellenlaufzeit: 198 ns	Wellenlaufzeit: 198 ns

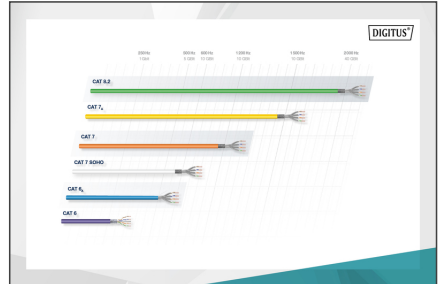
Leistungspegel-Tabelle

AWG	AWG	AWG	AWG	AWG	AWG	AWG	AWG	AWG	AWG
16	18	20	22	24	26	28	30	32	34
16	18	20	22	24	26	28	30	32	34
16	18	20	22	24	26	28	30	32	34
16	18	20	22	24	26	28	30	32	34

Certificate // **Zertifikat**

Class E // Klasse E

GHMT Type Approval



CEP Konformität

Standard-Beschreibung: 23 AWG (23/1) (250 MHz) (1 Gbit Ethernet) (E _{ca}) (LSZH)	Standard-Beschreibung: 23 AWG (23/1) (250 MHz) (1 Gbit Ethernet) (E _{ca}) (LSZH)
Standard-Beschreibung: 23 AWG (23/1) (250 MHz) (1 Gbit Ethernet) (E _{ca}) (LSZH)	Standard-Beschreibung: 23 AWG (23/1) (250 MHz) (1 Gbit Ethernet) (E _{ca}) (LSZH)
Standard-Beschreibung: 23 AWG (23/1) (250 MHz) (1 Gbit Ethernet) (E _{ca}) (LSZH)	Standard-Beschreibung: 23 AWG (23/1) (250 MHz) (1 Gbit Ethernet) (E _{ca}) (LSZH)
Standard-Beschreibung: 23 AWG (23/1) (250 MHz) (1 Gbit Ethernet) (E _{ca}) (LSZH)	Standard-Beschreibung: 23 AWG (23/1) (250 MHz) (1 Gbit Ethernet) (E _{ca}) (LSZH)

