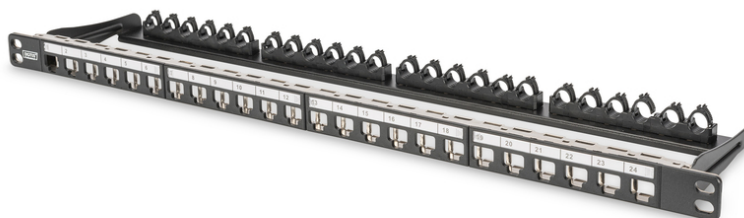


DIGITUS Modularni High Density (za veći broj priključaka) prespojni panel, oklopljeni

DN-91422
EAN 4016032343295



PANEL KEY. 24 PORT 19" 1/2U SA PROTUPRAŠNIM POKLO. label field, 0.5U, rack mount, black RAL 9005

DIGITUS® 24 portni 0,5U prespojni panel omogućuje ugradnju većeg broja (high density) modularnih utičnih modula. Pošto panel zauzima prostor od samo 0,5U, omogućuje ugradnju 48 portova na visini 1U (2 panela sa po 24 portova svaki).

- Layout Keystone Entry: Double-row
- Area of application: 483 mm (19") cabinet
- Norms: ISO/IEC 11801 3rd Ed., EN 50173-1, EIA/TIA 568-C
- General properties:
- Suitable for 483 mm (19") cabinet mounting
- Suitable for shielded Digitus® Keystone Modules and Couplers
- Central ground connection
- Plastic label field

- Technical properties:
- Housing material: 1.5 mm SPCC cold rolled steel sheet, powder-coated
- Material standard: EN 10 130(1991), BS 1449, NFA 36/401, DIN 1623, UNI 5866, UNE 36-086, SIS, JIS G 3141, ASTM, SAE, NFA 36/401
- Grounding bar material: Galvanized steel
- Physical properties:
- Operation temperature: -20° C to +70 °C (ISO/IEC 11801, EN 50173-1, ANSI/TIA/EIA 568 C)
- Colour: Black RAL9005
- Boja: crna, RAL 9005
- Jedinice: 0
- Priključci: 24

| Logistics | | | | | | |
|------------------------------|--------------|-------------|------------|------------|-------------|-----------------|
| | Number (pcs) | Weight (kg) | Depth (cm) | Width (cm) | Height (cm) | cm ³ |
| Packaging Unit Carton | 10 | 6.30 | 55.00 | 38.00 | 18.00 | 37.62 |
| Packaging Unit Inside | 1 | 0.63 | 3.00 | 53.00 | 18.00 | 2.86 |
| Packaging Unit Single | 1 | 0.63 | 3.00 | 53.00 | 18.00 | 2.86 |
| Net single without Packaging | 0 | 0.00 | 0.00 | 0.00 | 0.00 | 0.00 |

More images:

