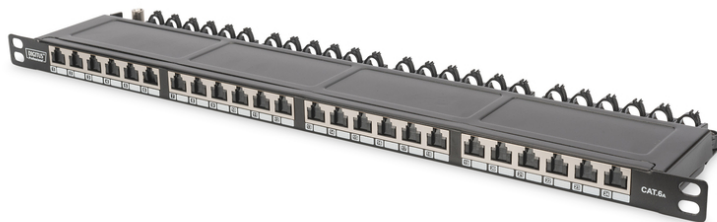


# DIGITUS CAT 6A, Class EA High Density Patch Panel, shielded

DN-91624S-SL-EA  
EAN 4016032341369



**DIGITUS CAT 6A Class EA patch panel, shielded 0.5U, 24-port RJ45, incl. dust cover, 8P8C,**

The DIGITUS® 24-port 0.5U Patch Panel offers a high density. As the panel is only 0.5U in height, it allows to present 48 ports on 1U (2 panels with 24 ports each) which can be installed.

**Save a lot of space (only 0.5U) - With shutters for dust protection - Best performance and link quality for your network**

- Transmission properties: Category 6A, Class EA
- Area of application: Up to 500 MHz, 10GBase-T
- Norms: ISO/IEC 11801 2nd Ed., EN 50173-1, EIA/TIA 568-C, 802.3af, 802.3at PoE+
- General properties:
- Suitable for 483 mm (19") cabinet mounting
- RJ45 female, 8P8C
- Cable installation via LSA strips, color coded according to EIA/TIA 568 A & B
- Cable fixing with smart cable ties
- Central ground connection
- 360° shield coverage
- Integrated dust cover
- Mechanical properties:
- Housing material: 1.5 mm galvanic cold rolled steel, acc. to EN1.4301, UNS S30400, AISI 304 and LMSAD110

- RJ45 female material: ABS UL 94V-0
- RJ45 female contact: Tinned phosphor bronze, 0.5 µ gold-plated contact
- RJ45 shielding: Tinned bronze
- LSA termination clamp: Krone LSA+, UL 94V-2, zinc plated phosphor bronze
- Ground wire: Not included
- Conductor plate: FR4, UL 94V-0
- Physical properties:
- Insertion force: 30N max. (IEC 60603-7-5)
- Retention strength: 7.7 kg between jack and plug
- Operation temperature: -20° C to +70 °C (ISO/IEC 11801, EN 50173-1, ANSI/TIA/EIA 568 C)
- Mating cycles female: > 750 acc. to ISO/IEC 11801, IEC 60603-7-5
- Clamp: > 200 acc. to ISO/IEC 11801, IEC 60603-7-5
- IDC wire size: 22 – 26 AWG solid and stranded conductor
- Insulation resistance: > 500 MOhm
- Contact resistance: < 20 MilliOhm
- Dielectric strength: 1000 VDC (Contact/Contact), 1500 VDC (Contact/Ground)
- Colour: Black RAL9005
- Boja: crna, RAL 9005
- Jedinice: 0
- Priključci: 24
- Kategorija: CAT 6A

Logistics						
	Number (pcs)	Weight (kg)	Depth (cm)	Width (cm)	Height (cm)	cm³
Packaging Unit Carton	6	9.00	54.50	30.00	12.00	19.62
Packaging Unit Inside	1	1.50	53.00	14.00	3.50	2.60
Packaging Unit Single	1	1.50	53.00	14.00	3.50	2.60
Net single without Packaging	0	0.00	0.00	0.00	0.00	0.00

More images:

