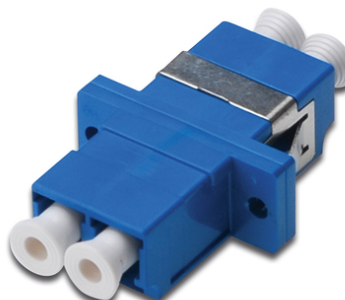


# DIGITUS LC / LC spojnica (interkonektor), singlemode

DN-96007-1  
 EAN 4016032335764



**ALWL SPOJNICA LC/LC SM DPLX DIGITUS DN-96007-1-D ceramic sleeve, polymer housing, incl. screws**

Visoko kvalitetne DIGITUS® optičke spojnice s keramičkom ferulom savršen su dodatak za sklapanje optičkih ladica. Zahvaljujući stalnoj kontroli kvalitete i preciznoj obradi spojnice garantiraju optimalne performanse i kvalitetu linka. Svaka spojnica opremljena je sa zaštitnim poklopcem koja štiti ferulu od prašine. Povrh toga spojnice su isporučene s prikladnim dodatnim priborom za montažu s kojim se odmah mogu montirati i fiksirati na prednje panele za optičke ladice. Pigtail-ovi iz DIGITUS® ponude osiguravaju savršene performanse.

Visoko kvalitetna proizvodnja osigurava savršen spoj konektora i spojnica.

**The best solution for Splice Boxes**

- LC / LC
- Duplex
- Singlemode
- Ceramic Sleeve
- Polymer housing
- Blue
- incl. fixing material

Logistics						
	Number (pcs)	Weight (kg)	Depth (cm)	Width (cm)	Height (cm)	cm³
Packaging Unit Carton	1	6.04	26.00	25.50	36.00	23.87
Packaging Unit Inside	50	0.20	22.00	14.50	2.00	638.00
Packaging Unit Single	1	0.00	2.00	2.00	0.50	2.00
Net single without Packaging	0	0.01	0.92	2.88	1.28	3.39

**Safety notes**

- Avoid direct contact with light sources: Fiber optic cables, especially those with active light sources such as lasers (e.g. in optical communication systems), can emit dangerous radiation that can damage eyes. Take care never to look directly into the light of an optical fiber, even if the light source is invisible to the naked eye.
- When working with fiber optic cables, especially during tests or when working with lasers, protective goggles should always be worn to protect against harmful radiation.
- When plugging and unplugging the cable, only grasp the plug and do not pull directly on the cable.
- Do not kink or crush: Fiber optic cables are sensitive to mechanical stress.
- To protect cables from physical damage, they should be laid in special ducts or with protective materials
- Keep cable connectors clean: Fiber optic cables are sensitive to dust and dirt. Even small particles on the connectors can severely impair the signal quality.
- Cables should not be used in environments with extremely high or very low temperatures. Observe the product information on the maximum operating temperature of the cable
- Check cables regularly for visible damage such as cracks, kinks or signs of wear. Defective cables should be replaced immediately.

**EU responsible person**

EU based economic operator ensuring the product complies with the required regulations.

ASSMANN Electronic GmbH  
Auf dem Schüffel 3  
Lüdenscheid, Germany  
<https://www.assmann.com>  
[info@assmann.com](mailto:info@assmann.com)