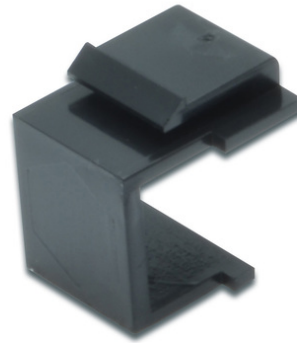


DIGITUS blind plate for modular patch panel

DN-BLIND-SW
EAN 4016032326878



Blind plate for modular patch panel color black RAL 9005

The DIGITUS® Snap-in adapters for Patch Panel offer you the easiest solution to expand empty fields of your Patch Panel or to cover them. The usage of blind plates makes it possible to cover fields, which are not in use, to protect them against dust and damage. The LC or ST Keystone frames contain a slot in each case for LC or ST plugs and are

therefore optimal to optimize the cabling of your Patch Panel. All DIGITUS® Snap-in adapters are available in the colors grey or black.

- Color black (RAL 9005)
- Snap-in panel mount
- Color: black, RAL 9005

Logistics						
	Number (pcs)	Weight (kg)	Depth (cm)	Width (cm)	Height (cm)	cm ³
Packaging Unit Carton	4	7.50	43.00	38.00	26.00	42.48
Packaging Unit Inside	500	0.94	9.00	25.00	24.00	5.40
Packaging Unit Single	1	0.00	1.40	2.00	2.00	5.60
Net single without Packaging	0	0.00	0.00	0.00	0.00	0.00

More images:

