

# DIGITUS Instalacijski kabel Kat.6 U/UTP, 305 m, simplex, Eca

DK-1613-VH-305  
EAN 4016032324553



## LAN KABEL U/UTP c6 LSOH DIGITUS 305 m Eca (EN 50575), AWG 23/1, 305 m paper box,

Digitus® instalacijski kabel Kat.6 U/UTP proizveden je kao 4x2xAWG23/1 i za brzine prijenosa do 250 MHz. Vanjski plašt bez halogena sukladan je standardima IEC 60332-1, FRNC-B, LSZH-1 i CPR Euro klase Eca. Kabel je prikladan za sustave strukturnog kabliranja u sekundarnim i tercijarnim sektorima. Sukladan je slijedećim standardima ISO/IEC 11801, DIN EN 50173, DIN EN 50288-6-1.

### Vrhunsku kvalitetu Vaše mreže osigurava oprema izrađena po standardima orijentiranim budućim zahtjevima.

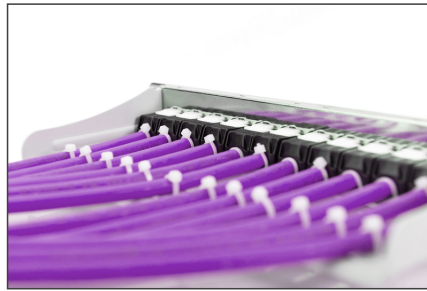
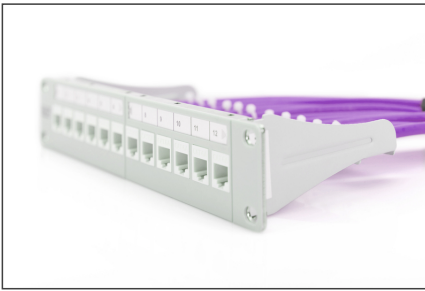
- Fizička svojstva:
- Vodič: Neizolirani bakar bez olova, kruti AWG 23/1
- Izolacija: HD-PE (polietilen visoke gustoće)
- Ukupan broj izoliranih vodiča: 8, 4 parice
- Kod u boji: Plavo-bijela, narančasto-bijela, zeleno-bijela, smeđe-bijela
- Pojedinačna zaštita parice: Ne postoji
- Zaštita cijelog kabela: Ne postoji
- Vanjski plašt: Eca na B2ca sukl. EN 50575; LSZH
- Promjer vanjskog plašta (nominalni): 0,5 mm (Eca); 0,6 mm (Dca); 1,0 mm (Cca); 1,0 mm (B2ca)
- Boja vanjskog plašta: Ljubičasta (RAL 4005)
- Mehaničke karakteristike:
- Vučno opterećenje: 150 N maks.
- Dinamički radijus savijanja: 8x AD mm min.
- Statički radijus savijanja: 4x AD mm min.

- Raspon temperatura za prijevoz i skladištenje: -20 °C do +60 °C
- Raspon radne temperature: -20 °C do +75 °C
- Temperaturni raspon instalacije: 0°C do +50°C
- Vanjski promjer Simplex (nominalni): 6,1 mm (Eca); 6,3 mm (Dca); 6,8 mm (Cca); 6,8 mm (B2ca)
- Težina (kg/km): 41 kg (Eca); 42 kg (Dca); 44 kg (Cca); 44 kg (B2ca)
- Električne karakteristike:
- Impedancija: 100±5Ω @ 1 - 250MHz
- Kapacitet: 40 pF/m nominalni @ 800 Hz
- Nebalansirani kapacitet (parica-uzemljenje): 1,5 pF/m maks @ 1 KHz
- Otpor izolacije: 5 GΩ x km min.
- Otpor DC petlje: 147 Ω/km maks. (2% maks. nebalansirani otpor)
- Napon: 72 Vdc maks.
- Prigušenje spoja: CA-tip 3
- Kašnjenje: 535 nS/100 m maks.
- Kašnjenje signala: 20 nS/100 m maks.
- Klasa odvajanja: „b” sukl. EN 50174-2
- NVP: 69%
- Asortiman: Instalacijski kabeli s upredenim paricama
- Kategorija: CAT 6
- Oklop: U-UTP, neoklopljeno
- CPR: Eca
- Duljina: 305 m
- Boja: ljubičasti
- Kapica: LSOH
- Struktura: 4 x 2 AWG 23/1, kruto upletena parica

## Logistics

	Number (pcs)	Weight (kg)	Depth (cm)	Width (cm)	Height (cm)	cm³
Packaging Unit Carton	1	12.30	45.00	44.50	25.00	50,062.50
Packaging Unit Inside	1	12.30	45.00	44.50	25.00	50,062.50
Packaging Unit Single	1	12.30	45.00	44.50	25.00	50,062.50
Net single without Packaging	0	0.00	0.00	0.00	0.00	0.00

More images:



AWG  
23/1

250  
MHz

1  
Gbit  
Ethernet

CAT  
6

20°/± 75°

6  
LSZH

E  
ca  
CPR class

**DK-1613-VH-305 // CAT 6 U/UTP Installation Cable, 305m, Simplex, E<sub>ca</sub>**

**Anwendungsbereich**  
Example of use

**DK-1613-VH-305 // CAT 6 U/UTP Installation Cable, 305m, Simplex, E<sub>ca</sub>**

**Kabelquerschnitt**  
Cable cross section

Produktdaten Product Information		Physikalische Spezifikationen Physical Properties	
Bezeichnung Name	DK-1613-VH-305 (CAT 6 U/UTP Installation Cable, 305m, Simplex, Eca)	Leiter Conductor	Bezugsnormen Reference Standards IEC 60332-1-2, IEC 60332-3-2, IEC 60332-3-10, IEC 60332-3-22, IEC 60332-3-24, IEC 60332-3-26, IEC 60332-3-28, IEC 60332-3-30, IEC 60332-3-32, IEC 60332-3-34, IEC 60332-3-36, IEC 60332-3-38, IEC 60332-3-40, IEC 60332-3-42, IEC 60332-3-44, IEC 60332-3-46, IEC 60332-3-48, IEC 60332-3-50, IEC 60332-3-52, IEC 60332-3-54, IEC 60332-3-56, IEC 60332-3-58, IEC 60332-3-60, IEC 60332-3-62, IEC 60332-3-64, IEC 60332-3-66, IEC 60332-3-68, IEC 60332-3-70, IEC 60332-3-72, IEC 60332-3-74, IEC 60332-3-76, IEC 60332-3-78, IEC 60332-3-80, IEC 60332-3-82, IEC 60332-3-84, IEC 60332-3-86, IEC 60332-3-88, IEC 60332-3-90, IEC 60332-3-92, IEC 60332-3-94, IEC 60332-3-96, IEC 60332-3-98, IEC 60332-3-100
Name Name	DK-1613-VH-305 (CAT 6 U/UTP Installation Cable, 305m, Simplex, Eca)	Material Material	Bezugsnormen Reference Standards IEC 60332-1-2, IEC 60332-3-2, IEC 60332-3-10, IEC 60332-3-22, IEC 60332-3-24, IEC 60332-3-26, IEC 60332-3-28, IEC 60332-3-30, IEC 60332-3-32, IEC 60332-3-34, IEC 60332-3-36, IEC 60332-3-38, IEC 60332-3-40, IEC 60332-3-42, IEC 60332-3-44, IEC 60332-3-46, IEC 60332-3-48, IEC 60332-3-50, IEC 60332-3-52, IEC 60332-3-54, IEC 60332-3-56, IEC 60332-3-58, IEC 60332-3-60, IEC 60332-3-62, IEC 60332-3-64, IEC 60332-3-66, IEC 60332-3-68, IEC 60332-3-70, IEC 60332-3-72, IEC 60332-3-74, IEC 60332-3-76, IEC 60332-3-78, IEC 60332-3-80, IEC 60332-3-82, IEC 60332-3-84, IEC 60332-3-86, IEC 60332-3-88, IEC 60332-3-90, IEC 60332-3-92, IEC 60332-3-94, IEC 60332-3-96, IEC 60332-3-98, IEC 60332-3-100
Stärke Gauge	23 AWG	Wicklung Windings	Bezugsnormen Reference Standards IEC 60332-1-2, IEC 60332-3-2, IEC 60332-3-10, IEC 60332-3-22, IEC 60332-3-24, IEC 60332-3-26, IEC 60332-3-28, IEC 60332-3-30, IEC 60332-3-32, IEC 60332-3-34, IEC 60332-3-36, IEC 60332-3-38, IEC 60332-3-40, IEC 60332-3-42, IEC 60332-3-44, IEC 60332-3-46, IEC 60332-3-48, IEC 60332-3-50, IEC 60332-3-52, IEC 60332-3-54, IEC 60332-3-56, IEC 60332-3-58, IEC 60332-3-60, IEC 60332-3-62, IEC 60332-3-64, IEC 60332-3-66, IEC 60332-3-68, IEC 60332-3-70, IEC 60332-3-72, IEC 60332-3-74, IEC 60332-3-76, IEC 60332-3-78, IEC 60332-3-80, IEC 60332-3-82, IEC 60332-3-84, IEC 60332-3-86, IEC 60332-3-88, IEC 60332-3-90, IEC 60332-3-92, IEC 60332-3-94, IEC 60332-3-96, IEC 60332-3-98, IEC 60332-3-100
Isolierung Insulation	LSZH	Wicklung Windings	Bezugsnormen Reference Standards IEC 60332-1-2, IEC 60332-3-2, IEC 60332-3-10, IEC 60332-3-22, IEC 60332-3-24, IEC 60332-3-26, IEC 60332-3-28, IEC 60332-3-30, IEC 60332-3-32, IEC 60332-3-34, IEC 60332-3-36, IEC 60332-3-38, IEC 60332-3-40, IEC 60332-3-42, IEC 60332-3-44, IEC 60332-3-46, IEC 60332-3-48, IEC 60332-3-50, IEC 60332-3-52, IEC 60332-3-54, IEC 60332-3-56, IEC 60332-3-58, IEC 60332-3-60, IEC 60332-3-62, IEC 60332-3-64, IEC 60332-3-66, IEC 60332-3-68, IEC 60332-3-70, IEC 60332-3-72, IEC 60332-3-74, IEC 60332-3-76, IEC 60332-3-78, IEC 60332-3-80, IEC 60332-3-82, IEC 60332-3-84, IEC 60332-3-86, IEC 60332-3-88, IEC 60332-3-90, IEC 60332-3-92, IEC 60332-3-94, IEC 60332-3-96, IEC 60332-3-98, IEC 60332-3-100
Lebensdauer Lifetime	10 years	Wicklung Windings	Bezugsnormen Reference Standards IEC 60332-1-2, IEC 60332-3-2, IEC 60332-3-10, IEC 60332-3-22, IEC 60332-3-24, IEC 60332-3-26, IEC 60332-3-28, IEC 60332-3-30, IEC 60332-3-32, IEC 60332-3-34, IEC 60332-3-36, IEC 60332-3-38, IEC 60332-3-40, IEC 60332-3-42, IEC 60332-3-44, IEC 60332-3-46, IEC 60332-3-48, IEC 60332-3-50, IEC 60332-3-52, IEC 60332-3-54, IEC 60332-3-56, IEC 60332-3-58, IEC 60332-3-60, IEC 60332-3-62, IEC 60332-3-64, IEC 60332-3-66, IEC 60332-3-68, IEC 60332-3-70, IEC 60332-3-72, IEC 60332-3-74, IEC 60332-3-76, IEC 60332-3-78, IEC 60332-3-80, IEC 60332-3-82, IEC 60332-3-84, IEC 60332-3-86, IEC 60332-3-88, IEC 60332-3-90, IEC 60332-3-92, IEC 60332-3-94, IEC 60332-3-96, IEC 60332-3-98, IEC 60332-3-100

**Leitungsgruppen Transmission Properties**

AWG	UTP	STP	PL	PLS	PLSL	PLSL2	PLSL3	PLSL4	PLSL5	PLSL6
16	16	16	16	16	16	16	16	16	16	16
18	18	18	18	18	18	18	18	18	18	18
20	20	20	20	20	20	20	20	20	20	20
22	22	22	22	22	22	22	22	22	22	22
24	24	24	24	24	24	24	24	24	24	24
26	26	26	26	26	26	26	26	26	26	26
28	28	28	28	28	28	28	28	28	28	28
30	30	30	30	30	30	30	30	30	30	30
32	32	32	32	32	32	32	32	32	32	32
34	34	34	34	34	34	34	34	34	34	34
36	36	36	36	36	36	36	36	36	36	36
38	38	38	38	38	38	38	38	38	38	38
40	40	40	40	40	40	40	40	40	40	40

**Certificate**  
No. 15145-14-3-2

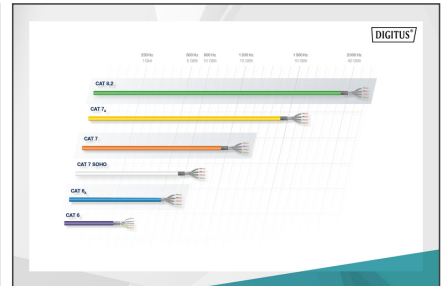
Class E

**GHMT Type Approval**

**Zertifikat**  
No. 15145-14-3-2

Klasse E

**GHMT Type Approval**



AWG	UTP	STP	PL	PLS	PLSL	PLSL2	PLSL3	PLSL4	PLSL5	PLSL6
16	16	16	16	16	16	16	16	16	16	16
18	18	18	18	18	18	18	18	18	18	18
20	20	20	20	20	20	20	20	20	20	20
22	22	22	22	22	22	22	22	22	22	22
24	24	24	24	24	24	24	24	24	24	24
26	26	26	26	26	26	26	26	26	26	26
28	28	28	28	28	28	28	28	28	28	28
30	30	30	30	30	30	30	30	30	30	30
32	32	32	32	32	32	32	32	32	32	32
34	34	34	34	34	34	34	34	34	34	34
36	36	36	36	36	36	36	36	36	36	36
38	38	38	38	38	38	38	38	38	38	38
40	40	40	40	40	40	40	40	40	40	40

