

DIGITUS Prespojni kabel, Kat. 6 S/FTP

DK-1644-020
EAN 4016032321712



DK-1644-020 pres.kabel S/FTP c6 2m sivi CU LSOH-D AWG 27/7, length 2 m, color grey

DIGITUS® prespojni kabeli Kat. 6 klase E proizvedeni su i testirani sukladno ISO/IEC 11801 i DIN EN 50173 Kat.6 specifikacijama. Garantiraju sukladnost ugrađenog sustava ožičenja zahtjevima specifikacija ISO & EN kanala i omogućuju optimalne razine performansi DIGITUS® kategorije 6 kabliranja. Performanse su testirane na brzinama do 250 MHz uključujući karakteristike performansi kao što je gubitak preslušavanje na bližem kraju ("NEXT"). DIGITUS® prespojni kabeli dizajnirani su i proizvedeni kako bi u potpunosti zadovoljili uporabu u različitim i najzahtjevnijim aplikacijama. Svaki kabel opremljen je s pregibnicom. Pregibnica je opremljena sa zaštitom polugice mikroutikača. Kategoriju 6 možete vrlo jednostavno prepoznati po mikroutikaču prozirno crvene boje.

Vrhunsku kvalitetu Vaše mreže osigurava oprema proizvedena sukladno najnovijim standardima.

- 2x RJ45 (8P8C) mikroutikača

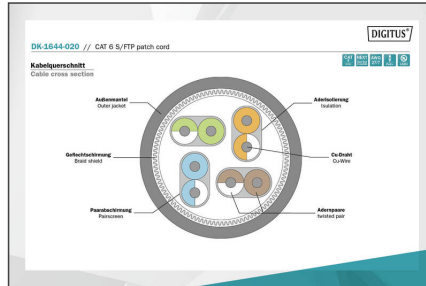
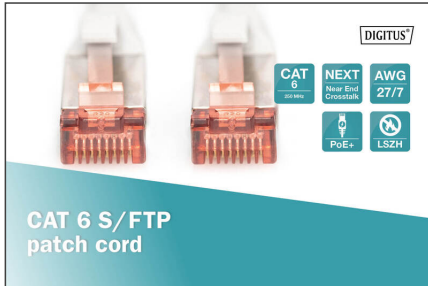
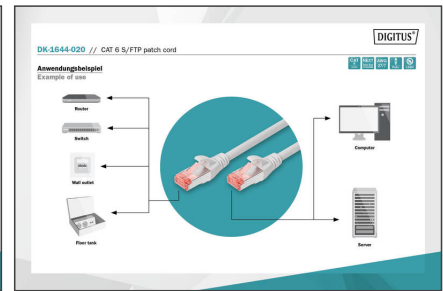
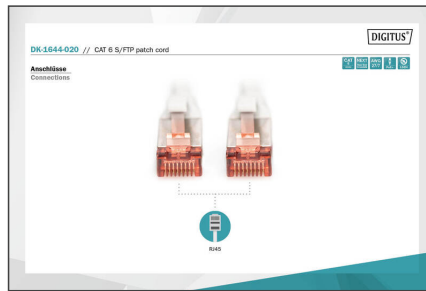
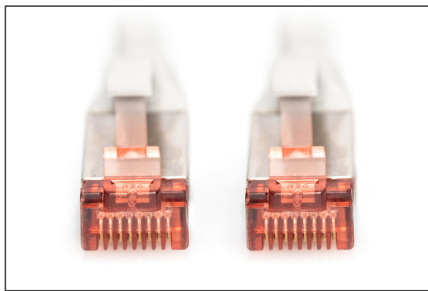
- Pregibnica je opremljena sa zaštitom polugice mikroutikača
- Oznaka dužine na pregibnici
- Vodič: Bakar (Cu)

Attributes

- Ambalaža: DIGITUS Polybag
- Konektor 1: Modularni RJ45 (8/8) utikač
- Konektor 2: Modularni RJ45 (8/8) utikač
- Konfiguracija: 1:1
- Kategorija: CAT 6
- Oklop: S-FTP, oklop parova u metalnoj foliji i pletenica
- Duljina: 2 m
- Boja: sivi
- Kapica: LSOH
- Struktura: 4 x 2 AWG 27/7, upletena parica
- Tanka verzija: Ne
- Flat Version: Ne

Logistics						
	Number (pcs)	Weight (kg)	Depth (cm)	Width (cm)	Height (cm)	cm³
Packaging Unit Carton	100	8.00	40.00	31.00	30.00	37.20
Packaging Unit Inside	10	0.80	12.00	30.00	36.00	12.96
Packaging Unit Single	1	0.08	1.60	14.00	25.00	560.00
Net single without Packaging	0	0.07	200.00	1.17	1.27	297.18

More images:



Safety notes

- When plugging and unplugging the cable, only grasp the plug and do not pull directly on the cable.
- Cables must not be kinked sharply or bent at tight angles, as this can damage the inner wires and lead to failures.
- Ensure that the cables are not under tensile load, as this can damage the insulation and the wires inside the cable.
- Ensure that cables are not laid in areas where they can be easily damaged mechanically.
- Cables should not be used in environments with extremely high or very low temperatures. Observe the product information on the maximum operating temperature of the cable
- Check cables regularly for visible damage such as cracks, kinks or signs of wear. Defective cables should be replaced immediately to avoid failures, short circuits or even electric shocks.

EU responsible person

EU based economic operator ensuring the product complies with the required regulations.

ASSMANN Electronic GmbH
 Auf dem Schüffel 3
 Lüdenscheid, Germany
<https://www.assmann.com>
info@assmann.com