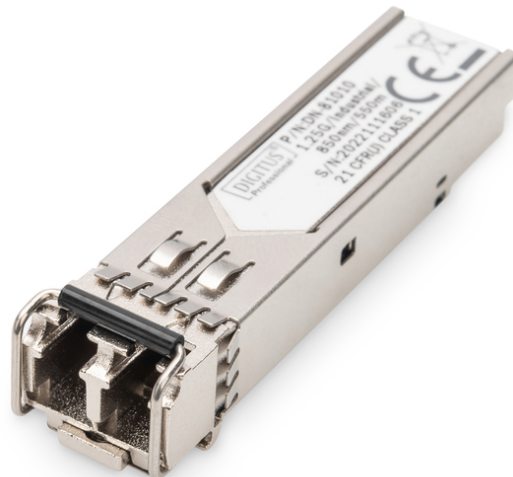


DIGITUS Industrial mini GBIC (SFP) Module, 1.25 Gbps, 0.55km

DN-81010
EAN 4016032307570



DIGITUS 1.25 Gbps SFP Module, Up to 550m Multimode, LC Duplex Connector, Industrial Ver.

The DIGITUS® mini GBIC (SFP) transceiver modules offer highest quality and reliability. Whether from switch to switch, converter to switch, converter to converter or any else application: The wide product range of DIGITUS® modules makes possible a flexible usage of the fiber technology. The conformity to the MSA (Multi Source Agreement) standard ensures a compatibility to third party manufacturers.

The plug and play fiber connection

- Mini GBIC SFP (Small Form Factor Pluggable) module
- Compatible with the following manufacturers: Allied Telesis, Allnet, Avaya, CISCO, D-Link, Edimax, FINISAR, FORCE 10, Gigamon, Intellinet, KTI Networks, Level One, PLANET, Tenda, TP-Link, TRENDnet, Mikrotik, ENTERASYS, RIVERSTONE, Unifi, Ubiquiti, ZyXEL, ZTE
- High quality and excellent reliability
- 1.25 Gbps Maximum Data Rate
- Compliant to IEEE 802.3z Gigabit Standard
- Class 1 laser product compliant with EN 60825-1
- Easy plug-and-play installation
- MSA (Multi Source Agreement) compliant

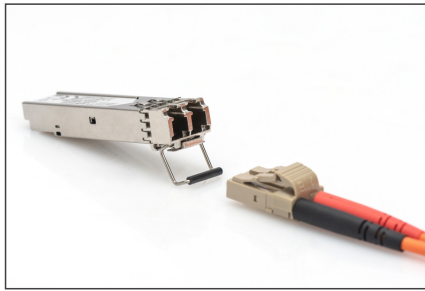
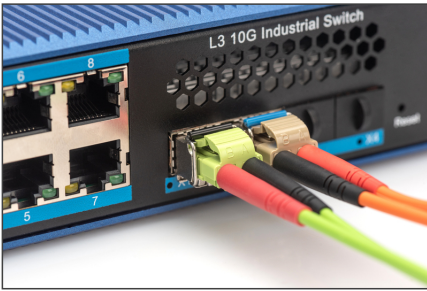
- Hot pluggable
- Connector: 1x LC Duplex
- 1000Base-SX - For Short Haul
- Wavelength: 850nm
- Transmission power: minimum -8 dBm, maximum -3 dBm
- Sensitivity Receiving Power: Minimum -20 dBm
- For a Distance of up to 0.55km
- Suitable for 50/125µm and 62.5/125µm multimode fiber cables
- Safe fast-locking mechanism
- 3.3V power supply
- Operating temperature: -40 °C - +85 °C
- Mod: Višemodni
- Priključak: LC
- Udaljenost (km): 0,5
- Valna duljina: 850 nm
- DDM podrška: Ne
- Kompatibilnost proizvođača: Univerzalni (MSA), Cisco
- Način emitiranja: Jednosmjerno
- Ethernet brzina: Brzi Ethernet

Package contents

- SFP module

Logistics						
	Number (pcs)	Weight (kg)	Depth (cm)	Width (cm)	Height (cm)	cm³
Packaging Unit Carton	240	8.50	50.00	29.00	54.50	79.03
Packaging Unit Inside	30	1.06	7.00	20.00	30.00	4.20
Packaging Unit Single	1	0.04	10.00	7.00	2.00	140.00
Net single without Packaging	0	0.00	0.00	0.00	0.00	0.00

More images:



SFP Modules							
Product Number	RAM Code	Speed	Distance	Connector	Mounting	Operating Temperature	Industrial Version
Fast Ethernet							
DM-4001	4298020040	1.0 Gbps	2 km	LC-Multimode Duplex	191mm	0 to +75 °C	✓
DM-4002	4298020070	1.0 Gbps	55 km	LC-Bipolar Multimode Duplex	191mm	0 to +75 °C	✓
DM-4004	4298020072	1.0 Gbps	55 km	LC-Bipolar Multimode Duplex	191mm	0 to +75 °C	✓
10G Ethernet							
10G Ethernet							
DM-4005	4298020081	10 Gbps	100 m	LC-Multimode Duplex	191mm	0 to +75 °C	✓
DM-4006	4298020082	10 Gbps	200 m	LC-Bipolar Multimode Duplex	191mm	0 to +75 °C	✓
DM-4007	4298020083	10 Gbps	200 m	LC-Bipolar Multimode Duplex	191mm	0 to +75 °C	✓
DM-4008	4298020084	10 Gbps	200 m	LC-Bipolar Multimode Duplex	191mm	0 to +75 °C	✓
DM-4009	4298020085	10 Gbps	200 m	LC-Bipolar Multimode Duplex	191mm	0 to +75 °C	✓
DM-4010	4298020086	10 Gbps	200 m	LC-Bipolar Multimode Duplex	191mm	0 to +75 °C	✓
DM-4011	4298020087	10 Gbps	200 m	LC-Bipolar Multimode Duplex	191mm	0 to +75 °C	✓
DM-4012	4298020088	10 Gbps	200 m	LC-Bipolar Multimode Duplex	191mm	0 to +75 °C	✓
DM-4013	4298020089	10 Gbps	200 m	LC-Bipolar Multimode Duplex	191mm	0 to +75 °C	✓
DM-4014	4298020090	10 Gbps	200 m	LC-Bipolar Multimode Duplex	191mm	0 to +75 °C	✓
DM-4015	4298020091	10 Gbps	200 m	LC-Bipolar Multimode Duplex	191mm	0 to +75 °C	✓
DM-4016	4298020092	10 Gbps	200 m	LC-Bipolar Multimode Duplex	191mm	0 to +75 °C	✓
DM-4017	4298020093	10 Gbps	200 m	LC-Bipolar Multimode Duplex	191mm	0 to +75 °C	✓
DM-4018	4298020094	10 Gbps	200 m	LC-Bipolar Multimode Duplex	191mm	0 to +75 °C	✓
DM-4019	4298020095	10 Gbps	200 m	LC-Bipolar Multimode Duplex	191mm	0 to +75 °C	✓
DM-4020	4298020096	10 Gbps	200 m	LC-Bipolar Multimode Duplex	191mm	0 to +75 °C	✓
DM-4021	4298020097	10 Gbps	200 m	LC-Bipolar Multimode Duplex	191mm	0 to +75 °C	✓
DM-4022	4298020098	10 Gbps	200 m	LC-Bipolar Multimode Duplex	191mm	0 to +75 °C	✓
DM-4023	4298020099	10 Gbps	200 m	LC-Bipolar Multimode Duplex	191mm	0 to +75 °C	✓
DM-4024	4298020100	10 Gbps	200 m	LC-Bipolar Multimode Duplex	191mm	0 to +75 °C	✓