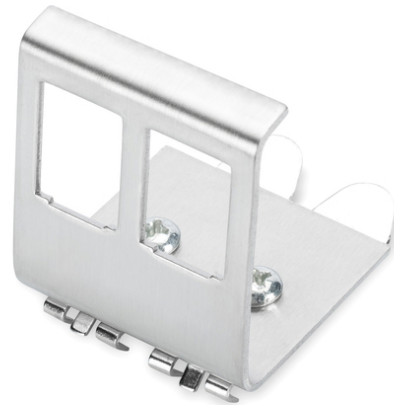


DIGITUS DIN rail adapter for 2x Keystone modules

AN-25185
EAN 4016032306344



DIN-Rail adapter for 2x Keystone Modules

The DIGITUS® DIN rail adapters are used to accommodate DIGITUS® Keystone modules. They are available as 1-port or 2-port versions.

- Keystone mount version: 45° outlet
- Areas of application: Electrical distribution boxes
- Standards: ISO/IEC 11801 3rd Ed., EN 50173-1, EIA/TIA 568-C
- General properties:

- Suitable for installation on the top-hat rail in electrical distribution boxes
- Technical features:
- Material empty housing: stainless steel
- Physical properties:
- Operating temperature: -20° C to +70 °C (ISO/IEC 11801, EN 50173-1, ANSI/TIA/EIA 568 C)

Logistics						
	Number (pcs)	Weight (kg)	Depth (cm)	Width (cm)	Height (cm)	cm³
Packaging Unit Carton	200	9.50	32.00	27.00	33.00	28.51
Packaging Unit Inside	10	0.48	25.00	6.00	6.00	900.00
Packaging Unit Single	1	0.05	18.00	8.00	4.00	576.00
Net single without Packaging	0	0.05	10.00	7.00	4.00	280.00

Safety notes

- Observe the specifications of the raw cable manufacturer during installation

EU responsible person

EU based economic operator ensuring the product complies with the required regulations.

ASSMANN Electronic GmbH
 Auf dem Schüffel 3
 Lüdenscheid, Germany
<https://www.assmann.com>
info@assmann.com