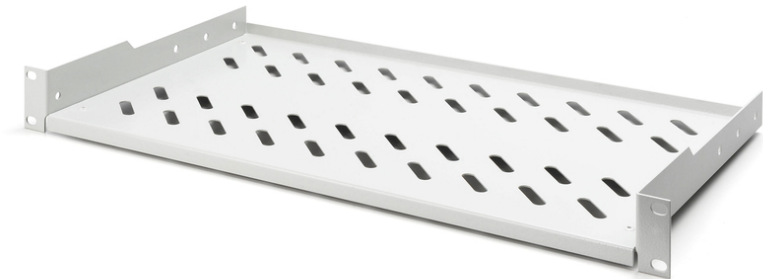


DIGITUS Shelf for fixed installation in 483 mm (19") cabinets

DN-97609
EAN 4016032275084



1U fixed shelf for racks from 400 mm depth 45x482x250 mm, up to 15 kg, grey (RAL 7035)

The shelves for fixed installation can be easily installed on the front 483 mm (19") profile rails of your 483 mm (19") network or server enclosure. Thanks to the sturdy, perforated metal sheet with a high load capacity, they are the ideal support surface for components that cannot be installed in 483 mm (19") rails.

- Fixed installation
- Sturdy, perforated metal sheet
- incl. mounting material
- 2-point mounting (front 19" profile rails)

- Width x depth of shelf inside: 441x250mm

Attributes

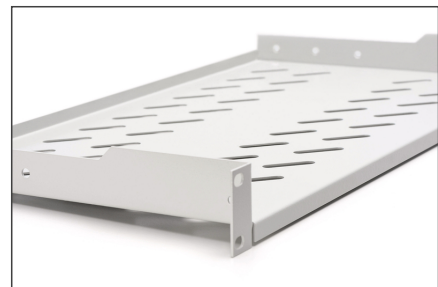
- Color: light grey, RAL 7035
- Load capacity: 15 kg
- Mounting type: Fixed mounting
- Units: 1
- Inch form factor (IEC 60297): 482.6 mm (19")
- Suitable cabinet depth: all

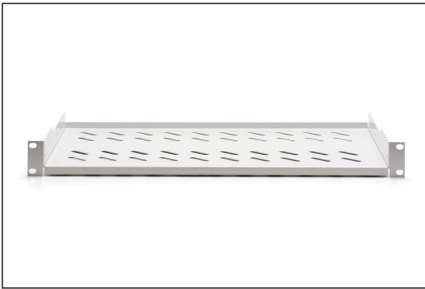
Package contents

- Installation set (screws, cage nuts, washers)

Logistics						
	Number (pcs)	Weight (kg)	Depth (cm)	Width (cm)	Height (cm)	cm ³
Packaging Unit Carton	18	22.80	59.50	50.00	51.50	153,212.00
Packaging Unit Inside	1	1.27	26.00	50.00	5.00	6.50
Packaging Unit Single	1	1.27	26.00	50.00	5.00	6.50
Net single without Packaging	0	1.20	25.00	48.30	4.50	5,433.75

More images:



**Safety notes**

- When installing and using the accessory product for network cabinets, observe the respective safety instructions of the manufacturer or the cabinet system in which you want to use the accessory.

EU responsible person

EU based economic operator ensuring the product complies with the required regulations.

ASSMANN Electronic GmbH
Auf dem Schüffel 3
Lüdenscheid, Germany
<https://www.assmann.com>
info@assmann.com