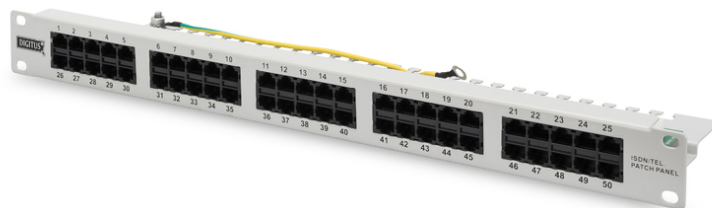


# DIGITUS CAT 3 ISDN patch panel, unshielded, grey

DN-91350-1  
EAN 4016032269021



**CAT 3 ISDN Patch Panel, unshielded, 50-port RJ45, 8P4C, LSA, 1U, rack mount, grey, 482x44x109**

The ISDN Patch Panels from DIGITUS® are available as 25- or 50-port version. With 1.5 mm galvanized cold-rolled steel they are perfectly suitable for 19" rack mounting.

**Future-oriented standards and high-end quality for your network.**

- Transmission properties: Category 3
- Area of application: Up to 16 MHz, 10GBase-T
- Norms: ISO/IEC 11801 3rd Ed., EN 50173-1, EIA/TIA 568-C
- General properties:
- Suitable for 483 mm (19") cabinet mounting
- RJ45 female, 8P4C
- Cable installation via LSA strips, color coded according to EIA/TIA 568 A & B
- Cable fixing with smart cable ties
- Central ground connection
- Mechanical properties:
- Housing material: 1.5 mm galvanic cold rolled steel, acc. to EN1.4301, UNS S30400, AISI 304 and LMSAD110
- RJ45 female material: ABS UL 94V-0
- RJ45 female contact: Tinned phosphor bronze, 0.6 µ gold-plated contact

- LSA termination clamp: Krone LSA+, UL 94V-0, zinc plated phosphor bronze
- Ground wire: 18 AWG, 40 cm
- Conductor plate: FR4, UL 94V-0
- Physical properties:
- Insertion force: 30N max. (IEC 60603-7-5)
- Retention strength: 7.7 kg between jack and plug
- Operation temperature: -20° C to +70 °C (ISO/IEC 11801, EN 50173-1, ANSI/TIA/EIA 568 C)
- Mating cycles female: > 750 acc. to ISO/IEC 11801, IEC 60603-7-5
- Clamp: > 200 acc. to ISO/IEC 11801, IEC 60603-7-5
- IDC wire size: 22 – 26 AWG solid and stranded conductor
- Carrying capacity: 1A at 50 °C
- Insulation resistance: > 500 MOhm
- Contact resistance: > 2.5 MOhm
- Dielectric strength: 1000 VDC (Contact/Contact), 1500 VDC (Contact/Ground)
- Color: Grey (RAL 7035)
- Color: light grey, RAL 7035
- Ports: 50
- Units: 1
- Category: CAT 3

Logistics						
	Number (pcs)	Weight (kg)	Depth (cm)	Width (cm)	Height (cm)	cm³
Packaging Unit Carton	10	12.00	53.50	32.00	28.00	47.94
Packaging Unit Inside	1	1.20	5.00	51.40	14.70	3,777.90
Packaging Unit Single	1	1.20	5.00	51.40	14.70	3,777.90
Net single without Packaging	0	1.13	4.50	48.50	12.50	2,728.12

More images:

