

DIGITUS CAT 6, Class E Patch Panel

DN-91616U
EAN 4016032241546



CAT 6, Class E patch panel, unshielded, 16-port RJ45, 8P8C, LSA, 1U, rack mount, black, 482x44x109

The unshielded CAT 6 Patch Panel from DIGITUS® is available as 16- or 24-port (1 High unit) or 48-port version (2 High units). It is manufactured acc. to Link Performance Class E, for up to 250 MHz, EN 50173 and ISO/IEC 11801. It is UL certified. The housing is made of 1.5 mm galvanized cold-rolled steel is therefore perfectly suitable for 19" rack mounting.

Future-oriented standards and high-end quality for your network.

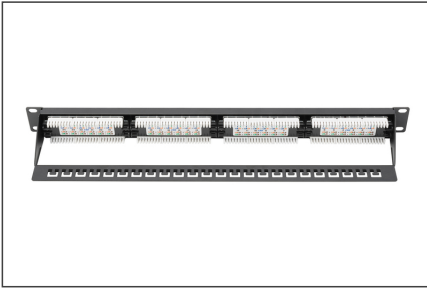
- Area of application: Up to 250 MHz, 1GBase-T, PoE
- Norms: ISO/IEC 11801 3rd Ed., EN 50173-1, EIA/TIA 568-C
- General properties:
- Suitable for 483 mm (19") cabinet mounting
- RJ45 female, 8P8C
- Cable installation via LSA strips, color coded according to EIA/TIA 568 A & B
- Cable fixing with smart cable ties
- Mechanical properties:
- Housing material: 1.5 mm galvanic cold rolled steel, acc. to EN1.4301, UNS S30400, AISI 304 and LMSAD110
- RJ45 female material: ABS UL 94V-0
- RJ45 female contact: Tinned phosphor bronze, 0.5 µ gold-plated contact

- RJ45 shielding: Tinned bronze
- LSA termination clamp: Krone LSA+, UL 94V-2, zinc plated phosphor bronze
- Ground wire: Not included
- Conductor plate: FR4, UL 94V-0
- Physical properties:
- Insertion force: 30N max. (IEC 60603-7-5)
- Retention strength: 7.7 kg between jack and plug
- Operation temperature: -20° C to +70 °C (ISO/IEC 11801, EN 50173-1, ANSI/TIA/EIA 568 C)
- Mating cycles female: > 750 acc. to ISO/IEC 11801, IEC 60603-7-5
- Clamp: > 200 acc. to ISO/IEC 11801, IEC 60603-7-5
- IDC wire size: 22 – 26 AWG solid and stranded conductor
- Insulation resistance: > 500 MOhm
- Contact resistance: < 20 MilliOhm
- Dielectric strength: 1000 VDC (Contact/Contact), 1500 VDC (Contact/Ground)

Attributes

- Color: black, RAL 9005
- Ports: 16
- Units: 1
- Category: CAT 6

Logistics						
	Number (pcs)	Weight (kg)	Depth (cm)	Width (cm)	Height (cm)	cm³
Packaging Unit Carton	10	7.31	58.00	54.00	19.00	59.51
Packaging Unit Inside	1	0.73	8.00	56.00	10.50	4.70
Packaging Unit Single	1	0.73	8.00	56.00	10.50	4.70
Net single without Packaging	0	0.43	2.50	48.50	4.50	545.63

More images:**Safety notes**

- Protect product from moisture
- Avoid antistatic charging when installing the product
- Observe the specifications of the raw cable manufacturer during installation

EU responsible person

EU based economic operator ensuring the product complies with the required regulations.

ASSMANN Electronic GmbH
Auf dem Schüffel 3
Lüdenscheid, Germany
<https://www.assmann.com>
info@assmann.com