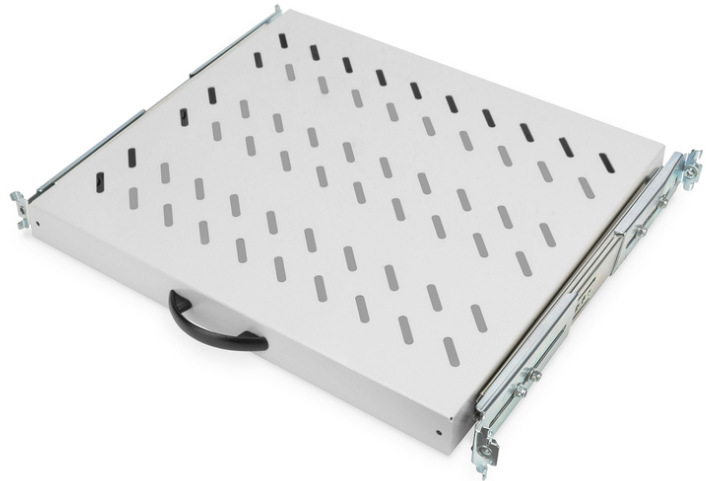


# DIGITUS Extendible Shelf for 483 mm (19") Cabinets

**DN-19 TRAY-2-600**  
**EAN 4016032135456**



**1U extendible shelf for 600 mm depth racks 40x485x368 mm, up to 25 kg, grey (RAL 7035)**

The extendible Shelves are easy to install at the four 483 mm (19") profile rails of your 483 mm (19") cabinets. Due to the sturdy, perforated sheet steel with a high load capacity, they are the optimal surface for your network components. An attached handle can be installed to facilitate the extension of the shelf. Available in standard color grey (RAL 7035) and black (RAL 9005).

- For fixing at the four 483 mm (19") mounting profile rails
- Extractable, with handle bar
- Sturdy, perforated sheet steel
- Delivery with complete set of needed fixing material
- Adjustable mounting brackets MIN.-MAX.: 300 - 530 mm

- 4-point fixing (front- and rear 19" profile rails)

**Attributes**

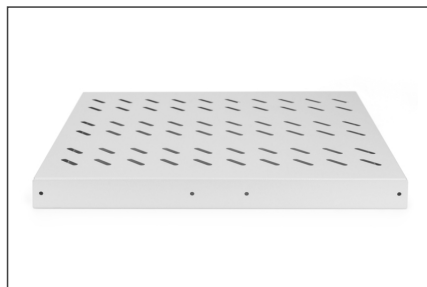
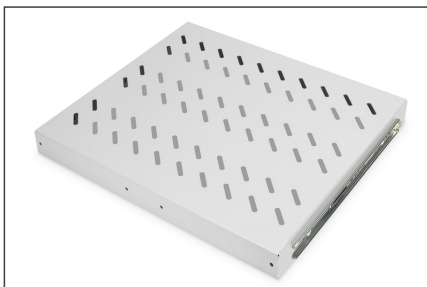
- Color: light grey, RAL 7035
- Load capacity: 25 kg
- Mounting type: Extendible
- Units: 1
- Inch form factor (IEC 60297): 482.6 mm (19")
- Suitable cabinet depth: 600 mm

**Package contents**

- Installation set (screws, cage nuts, washers)
- Handle

Logistics						
	Number (pcs)	Weight (kg)	Depth (cm)	Width (cm)	Height (cm)	cm <sup>3</sup>
Packaging Unit Carton	11	31.10	30.00	50.00	77.00	115.50
Packaging Unit Inside	1	2.83	39.00	51.00	4.30	8,552.70
Packaging Unit Single	1	2.83	39.00	51.00	4.30	8,552.70
Net single without Packaging	0	2.40	36.80	48.50	4.00	7,139.20

**More images:**



**Safety notes**

- When installing and using the accessory product for network cabinets, observe the respective safety instructions of the manufacturer or the cabinet system in which you want to use the accessory.

**EU responsible person**

EU based economic operator ensuring the product complies with the required regulations.

ASSMANN Electronic GmbH  
Auf dem Schüffel 3  
Lüdenscheid, Germany  
<https://www.assmann.com>  
[info@assmann.com](mailto:info@assmann.com)