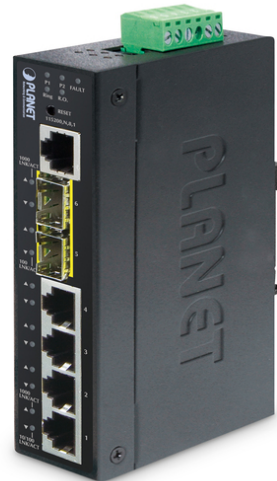


Planet Industrial 4 Port Gigabit PoE Switch, Unmanaged, 2 Uplinks

IGS-5225-4P2S
EAN 4711605283892



Planet Industrial POE+ Switch, 4xRJ45, 2xSFP, -40/+75°C, Managed, 144W 2-port 100/1000X SFP, 802.3at

6 port Gigabit Ethernet switch, IP40 industrial housing for DIN rail mounting, also suitable for wall mounting, 4 x 10/100/1000 Mbps (RJ45) with PoE+ injector 802.3at (max. 36W per port), compatible with 802.3af, PoE budget max. 240W (depending on power supply), 2 x SFP slots 100/1000 Mbps (for MFB and MGB modules), operating temperature -40 to +75°C, ESD protection 6000VDC, power consumption max. 151.8 Watt (with full PoE load), redundant power inputs 48-56V DC (>51V recommended for full PoE+ output). Comprehensive features such as Modbus TCP, VLAN, LACP, Redundant Ring (STP, RSTP, MSTP, G.8032 ERPS), 1588 PTPv2, QoS, Multicast, IGMP Snooping, Static Layer 3 Routing, ACL and much more. Web/Telnet/Console Management, IPv4/IPv6, SNMP. Weight 610g,

dimensions 50 x 87.8 x 135 mm.

- Number of ports: 4
- PoE Power budget: 30 W
- PoE standard: IEEE802.3at (PoE+)
- Ethernet speed: Gigabit
- Industrial usage: yes
- Installation type: DIN rail
- Managed: yes
- Number of ports (Uplink): 2
- Outdoorsuitable: no
- PoE (Power over Ethernet): yes
- Protection against vandalism: no
- Uplink port connection: SFP
- VLAN: no

Logistics						
	Number (pcs)	Weight (kg)	Depth (cm)	Width (cm)	Height (cm)	cm ³
Packaging Unit Carton	1	0.70	9.00	14.00	20.50	0.00
Packaging Unit Inside	1	0.70	0.00	0.00	0.00	0.00
Packaging Unit Single	1	0.70	9.00	14.00	20.50	0.00
Net single without Packaging	0	0.70	9.00	14.00	20.50	0.00

More images:

