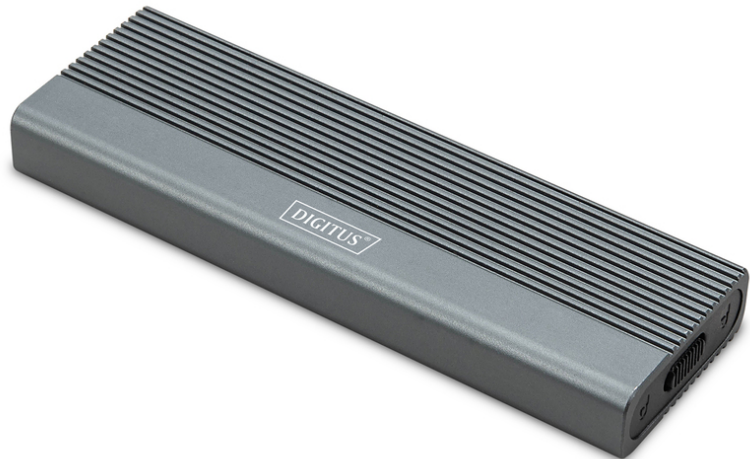


# DIGITUS USB M.2 hard disk enclosure, SSD, external, NVMe + SATA, 10Gbps (NVMe) 6 Gbps (SATA), USB3.1 Gen2, aluminum, toolfree

DA-71156  
EAN 4016032497561



### USB hard disk enclosure, external, NVMe + SATA 10Gbps(NVMe) 6 Gbps (SATA), USB3.1 Gen2, alu, toolfree

The DA-71156 USB hard disk enclosure offers a versatile and powerful storage solution for both NVMe and SATA SSDs. With support for M.2 modules in 2230, 2242, 2260 and 2280 formats and a maximum storage capacity of up to 8 TB, it is compatible with a wide range of SSDs. The data transfer rate is 10 Gbps for NVMe and 6 Gbps for SATA, while the USB 3.1 Gen2 interface is backwards compatible with USB 3.1, 3.0, 2.0 and 1.1. The tool-free design allows for easy installation and the robust JMS581DL chipset ensures reliable and efficient performance. An integrated LED indicator makes it easy to monitor SSD status, and the durable Pantone 430C aluminum enclosure provides excellent passive heat dissipation. With compact dimensions of 101x32x10 mm and a weight of only 97 g, the housing is ideal for mobile use. It supports plug-and-play and is powered directly via the USB port. The enclosure is compatible with Windows (11, 10, 8, 7, XP, 2000), macOS, Linux (2.4.x or higher), Google Chrome OS (9.x or higher), Android and iOS and offers comprehensive support for USB-C products.

**The DA-71156 M.2 SATA & NVMe SSD Enclosure will become your preferred solution for high capacity and high speed storage. This elegant, tool-less enclosure supports mini SSDs in M.2 B+M key format.**

- Supported Mini SSD in format: M.2, M.2, B+M Key(NVMe)
- Supported storage technology: NVMe
- Max. supported capacity: 8TB

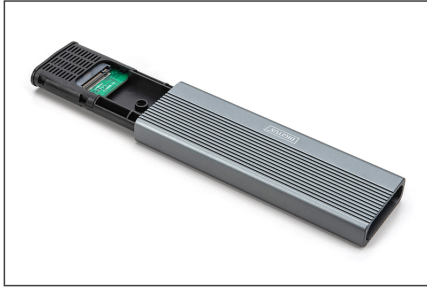
- Installation method: tool-free
- Data transfer rate: SATA: 6 Gbit/s, NVMe: 10 Gbit/s
- Supports M.2 modules in the format:2230,2242,2260,2280
- Supported keys: M Key, B+M Key (NVMe)
- USB standard: USB 3.1 Gen2
- Backwards compatible with USB: 3.1 / 3.0 / 2.0 / 1.1
- Chipset: JMS581DL
- LED activity indicator:yes
- Housing: Aluminum
- Heat dissipation: passive
- Supports Plug & Play
- Power supply via USB connection
- Supports Win 11,10, 8, 7
- Supports: Android / iOS
- Supports macOS , Linux 2.4.x or higher, Google Chrome OS 9.x or higher
- Operating temperature: 5 to 50°C
- Storage temperature: -40 to 70°C
- Humidity during operation: 5 to 90% (non-condensed)
- Dimensions: 101x32x10 mm
- Weight: 97g
- Color: Pantone 430C
- USB-C products: yes

#### Package contents

- External SSD enclosure, M.2 - USB Type-C™
- USB cable (C - A), 25 cm
- QIG

| Logistics                    |              |             |            |            |             |            |
|------------------------------|--------------|-------------|------------|------------|-------------|------------|
|                              | Number (pcs) | Weight (kg) | Depth (cm) | Width (cm) | Height (cm) | cm³        |
| Packaging Unit Carton        | 50           | 8.25        | 40.00      | 48.50      | 18.50       | 0.00       |
| Packaging Unit Inside        | 1            | 165.00      | 0.00       | 0.00       | 0.00        | 0.00       |
| Packaging Unit Single        | 1            | 165.00      | 15.20      | 9.40       | 3.90        | 557,232.00 |
| Net single without Packaging | 0            | 69.00       | 11.60      | 1.30       | 3.80        | 57,304.00  |

More images:



**DA-71156**  
USB Hard Disk Enclosure, External, NVMe + SATA, 100Gbps(NVMe) & 6 Gbps (SATA), USB3.1 Gen2, Alu, toolfree

- USB Version: USB 3.1
- USB Standard: USB 3.1
- Plug and Play: Yes
- Data transfer rate: 10 Gbps
- Toolfree: Yes
- Overheating temperature: No

**DA-71156**  
USB Hard Disk Enclosure, External, NVMe + SATA, 100Gbps(NVMe) & 6 Gbps (SATA), USB3.1 Gen2, Alu, toolfree

Wide compatibility: Supports M.2 modules in 2230, 2242, 2260 and 2280 formats, compatible with a wide range of SSDs.

- 2230 M.2 NVMe
- 2242 M.2 NVMe
- 2260 M.2 NVMe
- 2280 M.2 NVMe

Left side right side (top view) shows M.2 SATA drive and Front left & right M.2 SATA drive.

**DA-71156**  
USB Hard Disk Enclosure, External, NVMe + SATA, 100Gbps(NVMe) & 6 Gbps (SATA), USB3.1 Gen2, Alu, toolfree

Housing: Aluminum

Max. supported capacity: 8TB

**DA-71156**  
USB Hard Disk Enclosure, External, NVMe + SATA, 100Gbps(NVMe) & 6 Gbps (SATA), USB3.1 Gen2, Alu, toolfree

- Remove the back mounting bracket. Fit the back plate into the back of the enclosure.
- Slide the back bracket and push out the back plate.
- Plug the cable into the back of the enclosure.
- Push the enclosure of parts into the back of the enclosure.

**DA-71156**  
USB Hard Disk Enclosure, External, NVMe + SATA, 100Gbps(NVMe) & 6 Gbps (SATA), USB3.1 Gen2, Alu, toolfree

- USB Version: USB 3.1
- USB Standard: USB 3.1
- Plug and Play: Yes
- Data transfer rate: 10 Gbps
- Toolfree: Yes
- Overheating temperature: No

**Fast data transfer**  
Data transfer rate of 10Gbps (SATA) for SATA, up to 100Gbps (NVMe) for NVMe.

**USB 3.1 Gen 2 interface**  
Latest USB technology with back to back compatibility to USB 3.1 Gen 1 and 2.0.

**Plug and play**  
Simply connect via USB and get started straight away.

**Compatible with Windows, Mac OS, Linux, Chrome OS, Android and iOS.**

**DA-71156**  
USB Hard Disk Enclosure, External, NVMe + SATA, 100Gbps(NVMe) & 6 Gbps (SATA), USB3.1 Gen2, Alu, toolfree

- USB Version: USB 3.1
- USB Standard: USB 3.1
- Plug and Play: Yes
- Data transfer rate: 10 Gbps
- Toolfree: Yes
- Overheating temperature: No

