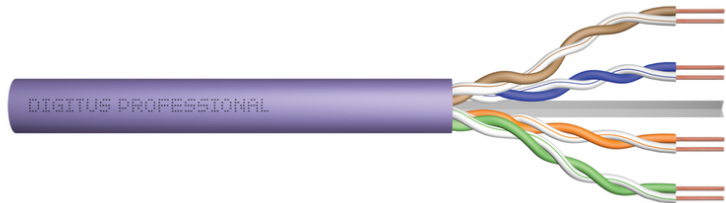


DIGITUS Cat.6 U/UTP installation cable, 500 m, duplex, Dca-s2,d2,a1

DK-1614-VH-D-5
EAN 4016032494560



CAT 6 U-UTP installation cable, 250 MHz Dca (EN 50575), AWG 23/1, 500m drum, dx, pu

The Digitus Cat 6 U/UTP installation cable is designed for use in the structured data center and the building cabling according to ISO/IEC 11801, DIN EN 50288-6-1, DIN EN 50173, IEC 60332-1. The cable is perfectly suitable for the transmission of both analog and digital data and also supports POE and POE+.

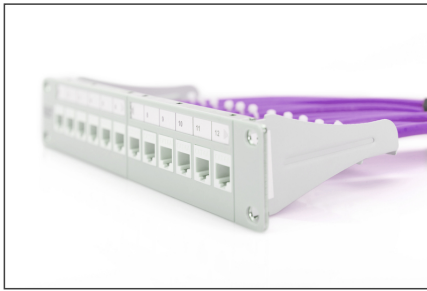
Future-oriented standards and high-end quality for your network.

- Physical properties:
- Conductor: Bare annealed copper, solid AWG 23/1
- System/s of AVCP: AVCP 3
- Insulation: HD-PE (High Density Polyethylene)
- Total number of insulated conductors: 8, twisted in 4 pairs
- Color code: Blue-white, orange-white, green-white, brown-white
- Individual pair shield: None
- Overall shielding: None
- Outer sheath: Eca to B2ca acc. to EN 50575; LSZH
- Outer sheath diameter (nominal): 0,5 mm (Eca); 0,6 mm (Dca); 1,0 mm (Cca); 1,0 mm (B2ca)
- Outer sheath color: Purple (RAL 4005)
- Mechanical properties:
- Tensile loading: 150N max.
- Dynamic bending radius: 8x AD mm min.
- Static bending radius: 4x AD mm min.
- Shipping- and storage temperature range: -20 °C up to +60 °C

- Operating temperature range: -20 °C up to +75 °C
- Installation temperature range: 0 °C up to +50 °C
- Overall diameter Simplex (nominal): 6,1 mm (Eca); 6,3 mm (Dca); 6,8 mm (Cca); 6,8 mm (B2ca)
- Weight (kg/km): 41 kg (Eca); 42 kg (Dca); 44 kg (Cca); 44 kg (B2ca)
- Electrical properties:
- Impedance: 100±5Ohm @ 1 - 250MHz
- Capacitance: 40 pF/m nominal @ 800 Hz
- Capacitance unbalance (pair-ground): 1.5 pF/m max. @ 1 KHz
- Insulation resistance: 5 GOhm x km min.
- DC loop resistance: 147 Ohm/km max. (2% max. resistance unbalance)
- Voltage resistance: 72 Vdc max.
- Coupling attenuation: CA-Type 3
- Signal propagation delay: 535 nS/100 m max.
- Propagation delay: 20 nS/100 m max.
- Separating class: „b“ gem. EN 50174-2
- NVP: 69%
- Assortment: Twisted Pair Installation Cables
- Category: CAT 6
- Shielding: U-UTP, unshielded
- CPR: Dca
- Length: 500 m
- Color: violet
- Jacket: LSOH
- Structure: 4 x 2 AWG 23/1, solid twisted pair

Logistics						
	Number (pcs)	Weight (kg)	Depth (cm)	Width (cm)	Height (cm)	cm ³
Packaging Unit Carton	1	42.00	53.00	23.00	33.00	0.00
Packaging Unit Inside	1	42.00	0.00	0.00	0.00	0.00
Packaging Unit Single	1	42.00	0.00	0.00	0.00	0.00
Net single without Packaging	0	0.00	0.00	0.00	0.00	0.00

More images:



DIGITUS

AWG 23/1, 250 MHz, 1 Gbit Ethernet, CAT 6, 2007+ A 75° C, 6 LSZH, D_{ca} CPR class

CAT 6 U/UTP Installation Cable, 305 m, Simplex, D_{ca}

DIGITUS

DK.1614-VH-305 // CAT 6 U/UTP Installation Cable, 305m, Simplex, D_{ca}

Anwendungsbispiel
Example of use

DIGITUS

DK.1614-VH-305 // CAT 6 U/UTP Installation Cable, 305m, Simplex, D_{ca}

Kabelschicht
Cable cross section

Adressierte Datenpaar, Cu-Braut Cable, Adressierte Datenpaar

DIGITUS

Produktdaten Product Information	Physikalische Spezifikationen Physical Properties
Hersteller Harel (China, Simplex, Netz, Netz, Netz) Part Number DK.1614-VH-305 SKU DK.1614-VH-305 Part Number DK.1614-VH-305 Part Number DK.1614-VH-305	Color Purple Shielding None Shielding None Shielding None Shielding None
Norm Name IEC 61140-1 (EN 60950-1, EN 60950-2) Norm IEC 61140-1 (EN 60950-1, EN 60950-2)	Material Polyethylene Material Polyethylene Material Polyethylene Material Polyethylene
Elektrische Eigenschaften Electrical Properties Standard CAT 6 Standard CAT 6 Standard CAT 6 Standard CAT 6	Abweichung bei Betrieb (under operating conditions) None Abweichung bei Betrieb (under operating conditions) None Abweichung bei Betrieb (under operating conditions) None Abweichung bei Betrieb (under operating conditions) None
Mechanische Eigenschaften Mechanical Properties Standard CAT 6 Standard CAT 6 Standard CAT 6 Standard CAT 6	Abweichung bei Betrieb (under operating conditions) None Abweichung bei Betrieb (under operating conditions) None Abweichung bei Betrieb (under operating conditions) None Abweichung bei Betrieb (under operating conditions) None

DIGITUS

Leistungspegel-Tabelle

AWG	AWG	AWG	AWG	AWG	AWG	AWG	AWG	AWG	AWG
24	24	24	24	24	24	24	24	24	24
20	20	20	20	20	20	20	20	20	20
16	16	16	16	16	16	16	16	16	16
12	12	12	12	12	12	12	12	12	12
8	8	8	8	8	8	8	8	8	8
4	4	4	4	4	4	4	4	4	4

3P PARTNER

Compliance Statement
 EuroNorm Class E / Category 6
 ISO/IEC, EN & ANSII/TIA
 Four Connector Channel
 D-88212 Aalen, Germany
 Auf dem Schloß 11
 88212 Aalen, Germany
 Tel: +49 (0) 71 41 90 10 0
 Fax: +49 (0) 71 41 90 10 10
 E-Mail: info@digitus.de

intertek

ETL Verified Certificate of Conformance Number: 1642782CAT-001

Category 6 U/UTP Ethernet Network Cable

Model Number: CAT 6 U/UTP Ethernet Network Cable

Manufacturer: Digitus Electronics GmbH

Product Name: CAT 6 U/UTP Ethernet Network Cable

Model Number: CAT 6 U/UTP Ethernet Network Cable

Manufacturer: Digitus Electronics GmbH

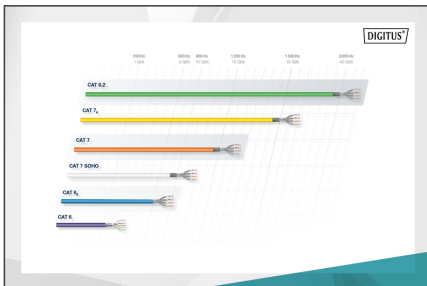
Product Name: CAT 6 U/UTP Ethernet Network Cable

Certificate
 No. 251415-13-14
 Class E

Zertifikat
 No. 251415-13-14
 Klasse E

2 Connector Channel, Cat6e, Class E
 GHMT Type Approval

2 Connector Channel, Cat6e, Class E
 GHMT Type Approval



DIGITUS

CEP Evaluation
 Compliance with CE Marking

Leistungspegel-Tabelle
 Compliance with CE Marking

Adressierte Datenpaar
 Addressed Data Pairs

Zusätzliche Informationen
 Additional Information

B2_{ca} **C_{ca}** **D_{ca}** **E_{ca}**

1+ **3**

C_{ca} **s1a** **d1** **a1**

