

DIGITUS Wall Mounting Cabinet SOHO PRO - 483 mm (19") - 540x400 mm (WxD)

DN-49207
 EAN 4016032493761



19" 12U wall mounting cabinet, SOHO PRO 595 x 540 x 400 mm, black

Whether for private areas, office or sub-distribution units with limited space: With the compact 483 mm (19") solutions from the SOHO PRO series, you can install your network wherever you like. The wall housings available in four rack units (4 rack units, 7 rack units, 9 rack units, 12 rack units) are equipped with a full glass door as well as a cable entry in the roof and floor. A pair of galvanized 483 mm (19") profile rails labeled with easy-to-read rack units are installed on the inside. Their depth can be adjusted. Each cabinet features a robust steel design made of up to 1.5 mm thick sheet steel. Coloring is done with electrostatic powder coating in the standard colors gray (RAL 7035) or jet black (RAL 9005). The door hinges can be switched. The network are unassembled on delivery, in an optimized flat pack. Installation takes just a few steps and is extremely easy thanks to the step-by-step instructions included.

The DIGITUS® Wall Housing SOHO PRO series is characterized by efficient delivery in an optimized flat pack as well as particularly user-friendly installation.

- Protection class IP20
- Lockable safety glass door
- 200° door opening angle
- 1-point locking on the front door

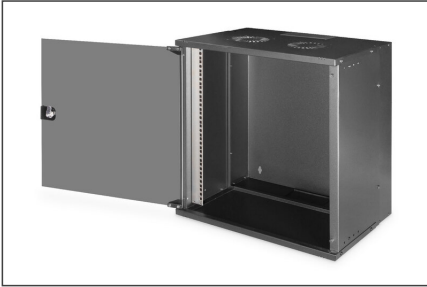
- 483 mm (19") profile rails on the front, mounted on the front inside the cabinet, galvanized
- 483 mm (19") profile rails are adjustable in depth
- 1.1 - 1.5 thick sheet steel with high load capacity, powder-coated
- Cable entry with plastic cover in roof and floor
- Ventilation slits for active and passive ventilation
- Installation depth for components max.: 327 mm
- Product dimensions (H x W x D): 595 x 540 x 400 mm
- Cabinet type: Wall mounting cabinet
- Color: black, RAL 9005
- Depth: 400 mm
- Front door: Glass door, single opening
- Load capacity: 60 kg
- Side panels: Both sides
- Units: 12
- Width: 540 mm
- IP protection class: IP20
- Mounted: no

Package contents

- Installation set (screws, captive nuts, washers)
- 2x Keys
- 1x QIG

Logistics						
	Number (pcs)	Weight (kg)	Depth (cm)	Width (cm)	Height (cm)	cm³
Packaging Unit Carton	1	13.69	60.00	58.00	15.00	52,200.00
Packaging Unit Inside	1	13.69	60.00	58.00	15.00	52,200.00
Packaging Unit Single	1	13.69	60.00	58.00	15.00	52,200.00
Net single without Packaging	0	12.63	40.00	54.00	59.20	0.00

More images:



DN-49207
Wall Mounting Cabinet 50HG PRO
485mm (19") - 560x400mm (WxD)

DIGITUS

1. Slide the top panel into the body in the direction of the arrows. Pay attention that the corners of the top panel are not to be damaged by the sharp edges of the body. Insert the top edge of the glass door in the large hole of the top panel. Insert the second 25mm top panel to the panel gap of the body.

2. Assemble the bottom panel to the body by 4 screws.

3. The top cabinet of this rack has handles when mounting the glass. Check the dimensions of the cabinet (height, width) and the dimensions of the top panel assembly.

4. Check the QR code and contact us with the installation video. Your distributor is happy to help.

DN-49207
Wall Mounting Cabinet 50HG PRO
485mm (19") - 560x400mm (WxD)

DIGITUS

1. Take the 12" Euro cylinder out of the lock.

2. Clean the trapped side panel of the lock.

3. Slide the bottom plate into the body in the direction of the arrows. The bottom plate fits into the recess of the bottom plate into the gap of the body. The top cabinet is ready to be fixed to the cabinet. Fixing the cabinet panel handle body needs to be done in the direction of the arrows. The top panel is fixed to the cabinet panel by 4 screws. Check the dimensions of the cabinet (height, width) and the dimensions of the top panel assembly. The top panel is fixed to the cabinet panel by 4 screws. Check the dimensions of the cabinet (height, width) and the dimensions of the top panel assembly. The top panel is fixed to the cabinet panel by 4 screws. Check the dimensions of the cabinet (height, width) and the dimensions of the top panel assembly.

4. Fix the body plate and bottom panel to fix at the backside. Separate the top edge of the glass door from the top edge of the glass door.

