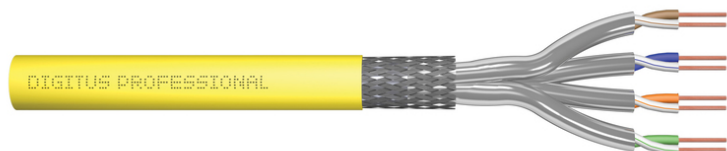


DIGITUS CAT 7A S-FTP installation cable, 1000 m, simplex, Dca-s1a d1 a1

DK-1743-A-VH-10-LD
EAN 4016032455387



CAT 7A S-FTP installation cable, 1250 MHz Dca, AWG 23/1, 1000 m drum, simplex, color yellow

The Digitus CAT 7A installation cable is designed for use in the structured data center and the building cabling according to ISO/IEC 11801, DIN EN 50288-4-1, DIN EN 50173, IEC 61156-7, EN 50288-9-1. The cable is perfectly suitable for the transmission of both analog and digital data and also supports POE and POE+. The shielding structure is composed of single shielded pairs with a tinned copper braid, which ensures excellent shielding and electrical values.

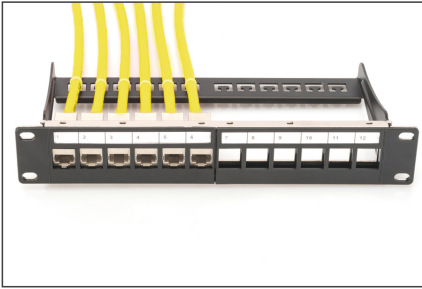
Future-oriented standards and high-end quality for your network.

- Physical properties:
- Conductor: Bare annealed copper, solid AWG 23/1
- System/s of AVCP: AVCP 3
- Insulation: SFS-PE (Foam-Skin Polyethylene)
- Total number of insulated conductors: 8, twisted in 4 pairs
- Color code: Blue-white, orange-white, green-white, brown-white
- Individual pair shielding: Aluminum foil, providing 100 % coverage
- Overall shielding: Copper tinned braid
- Outer sheath: Dca-s1a d1 a1 acc. EN 50575; LSZH
- Outer sheath diameter (nominal): 0,60 mm (Dca); 0,60 mm (Cca)
- Outer sheath color: Yellow (RAL 1028)
- Mechanical properties:
- Tensile loading: 150N max.
- Dynamic bending radius: 8x AD mm min.
- Static bending radius: 4x AD mm min.
- Shipping- and storage temperature range: -20 °C up to +60°C

- Operating temperature range: -20 °C up to +60 °C
- Temperature installation range: 0°C to +50°C
- Overall diameter Simplex (nominal): 7,8 mm (Dca); 7,8 mm (Cca)
- Weight (kg/km): 65 kg (Dca); 65 kg (Cca)
- Electrical properties:
- Impedance: 100±5 Ohm @ 1-1250 MHz
- Capacitance: 40 pF/m nominal @ 1 KHz
- Capacitance unbalance (pair-ground): 1.6 pF/m max. @ 1 KHz
- Insulation resistance: 5 GOhm x km min.
- DC loop resistance: 147 Ohm/Km max. (2% max. resistance unbalance)
- Voltage resistance: 72 Vdc max.
- Coupling attenuation: CA-Type 1b
- Signal propagation delay: 450 nS/100 m max.
- Propagation delay: 10 nS/100 m max.
- Separating class: "d" acc. to EN 50174-2
- NVP: 79%
- Flame spread: EN 60332-1-2 (LSOH-PVC)
- Halogen-free, corrosiveness: EN 60754-1/2 (LSOH)
- Smoke density EN 61034-2
- Assortment: Twisted Pair Installation Cables
- Category: CAT 7A
- Shielding: S-FTP, pairs in metal foil and braid shielding
- CPR: Dca
- Length: 1000 m
- Color: yellow
- Jacket: LSOH
- Structure: 4 x 2 AWG 23/1, solid twisted pair

Logistics						
	Number (pcs)	Weight (kg)	Depth (cm)	Width (cm)	Height (cm)	cm ³
Packaging Unit Carton	1	0.00	0.00	0.00	0.00	0.00
Packaging Unit Inside	1	0.00	0.00	0.00	0.00	0.00
Packaging Unit Single	1	0.00	0.00	0.00	0.00	0.00
Net single without Packaging	0	0.00	0.00	0.00	0.00	0.00

More images:



1250 MHz
Transmission

10 Gbit/s
Ethernet

CAT 7A
1000 MHz

AWG 23/1

LSZH

Dca
CPR class

CAT 7A S/FTP
Installation Cable, 1000 m, Simplex, Dca

DK-1743-A-VH-10-LD // CAT 7, S/FTP Installation Cable, 1000m, Simplex, Dca

Anwendungsbeispiel
Example of use

DK-9335A DK-9335C

DK-1743-A-VH-10-LD // CAT 7, S/FTP Installation Cable, 1000m, Simplex, Dca

Kabelquerschnitt
Cable cross section

Adressierung
Outer jacket

Adressierung
Twisted pair

Isolierschicht
Shield strand

Isolierschicht
Twisted pair

Adressierung
Twisted pair

Adressierung
Twisted pair

DK-1743-A-VH-10-LD // CAT 7, S/FTP Installation Cable, 1000m, Simplex, Dca

Produktdaten Product Information		Physikalische Eigenschaften Physical Properties	
Bestellnummer	DK-1743-A-VH-10-LD	Leiter	23 AWG 120° (23 AWG 120°)
Line Number	DK-1743-A-VH-10-LD	Leiterisolierung	0,10 mm (4,0 mil) (23 AWG 120°)
Teilenummer	DK-1743-A-VH-10-LD	Isolierschicht	0,15 mm (6,0 mil) (23 AWG 120°)
Hersteller	DK-1743-A-VH-10-LD	Adressierung	23 AWG 120° (23 AWG 120°)
Part Number	DK-1743-A-VH-10-LD	Adressierung	23 AWG 120° (23 AWG 120°)
Product Name	DK-1743-A-VH-10-LD	Adressierung	23 AWG 120° (23 AWG 120°)
Product Description	DK-1743-A-VH-10-LD	Adressierung	23 AWG 120° (23 AWG 120°)
Product Type	DK-1743-A-VH-10-LD	Adressierung	23 AWG 120° (23 AWG 120°)
Product Category	DK-1743-A-VH-10-LD	Adressierung	23 AWG 120° (23 AWG 120°)
Product Subcategory	DK-1743-A-VH-10-LD	Adressierung	23 AWG 120° (23 AWG 120°)
Product Code	DK-1743-A-VH-10-LD	Adressierung	23 AWG 120° (23 AWG 120°)
Product ID	DK-1743-A-VH-10-LD	Adressierung	23 AWG 120° (23 AWG 120°)
Product Keyword	DK-1743-A-VH-10-LD	Adressierung	23 AWG 120° (23 AWG 120°)
Product Weight	DK-1743-A-VH-10-LD	Adressierung	23 AWG 120° (23 AWG 120°)
Product Dimensions	DK-1743-A-VH-10-LD	Adressierung	23 AWG 120° (23 AWG 120°)
Product Manufacturer	DK-1743-A-VH-10-LD	Adressierung	23 AWG 120° (23 AWG 120°)
Product Material	DK-1743-A-VH-10-LD	Adressierung	23 AWG 120° (23 AWG 120°)
Product Finish	DK-1743-A-VH-10-LD	Adressierung	23 AWG 120° (23 AWG 120°)
Product Color	DK-1743-A-VH-10-LD	Adressierung	23 AWG 120° (23 AWG 120°)
Product Usage	DK-1743-A-VH-10-LD	Adressierung	23 AWG 120° (23 AWG 120°)
Product Compatibility	DK-1743-A-VH-10-LD	Adressierung	23 AWG 120° (23 AWG 120°)
Product Warranty	DK-1743-A-VH-10-LD	Adressierung	23 AWG 120° (23 AWG 120°)
Product Certification	DK-1743-A-VH-10-LD	Adressierung	23 AWG 120° (23 AWG 120°)
Product Approval	DK-1743-A-VH-10-LD	Adressierung	23 AWG 120° (23 AWG 120°)
Product Compliance	DK-1743-A-VH-10-LD	Adressierung	23 AWG 120° (23 AWG 120°)
Product Safety	DK-1743-A-VH-10-LD	Adressierung	23 AWG 120° (23 AWG 120°)
Product Security	DK-1743-A-VH-10-LD	Adressierung	23 AWG 120° (23 AWG 120°)
Product Reliability	DK-1743-A-VH-10-LD	Adressierung	23 AWG 120° (23 AWG 120°)
Product Durability	DK-1743-A-VH-10-LD	Adressierung	23 AWG 120° (23 AWG 120°)
Product Performance	DK-1743-A-VH-10-LD	Adressierung	23 AWG 120° (23 AWG 120°)
Product Quality	DK-1743-A-VH-10-LD	Adressierung	23 AWG 120° (23 AWG 120°)
Product Consistency	DK-1743-A-VH-10-LD	Adressierung	23 AWG 120° (23 AWG 120°)
Product Accuracy	DK-1743-A-VH-10-LD	Adressierung	23 AWG 120° (23 AWG 120°)
Product Precision	DK-1743-A-VH-10-LD	Adressierung	23 AWG 120° (23 AWG 120°)
Product Stability	DK-1743-A-VH-10-LD	Adressierung	23 AWG 120° (23 AWG 120°)
Product Flexibility	DK-1743-A-VH-10-LD	Adressierung	23 AWG 120° (23 AWG 120°)
Product Adaptability	DK-1743-A-VH-10-LD	Adressierung	23 AWG 120° (23 AWG 120°)
Product Versatility	DK-1743-A-VH-10-LD	Adressierung	23 AWG 120° (23 AWG 120°)
Product Compatibility	DK-1743-A-VH-10-LD	Adressierung	23 AWG 120° (23 AWG 120°)
Product Interoperability	DK-1743-A-VH-10-LD	Adressierung	23 AWG 120° (23 AWG 120°)
Product Integration	DK-1743-A-VH-10-LD	Adressierung	23 AWG 120° (23 AWG 120°)
Product Scalability	DK-1743-A-VH-10-LD	Adressierung	23 AWG 120° (23 AWG 120°)
Product Expandability	DK-1743-A-VH-10-LD	Adressierung	23 AWG 120° (23 AWG 120°)
Product Configurability	DK-1743-A-VH-10-LD	Adressierung	23 AWG 120° (23 AWG 120°)
Product Customizability	DK-1743-A-VH-10-LD	Adressierung	23 AWG 120° (23 AWG 120°)
Product Modifiability	DK-1743-A-VH-10-LD	Adressierung	23 AWG 120° (23 AWG 120°)
Product Maintainability	DK-1743-A-VH-10-LD	Adressierung	23 AWG 120° (23 AWG 120°)
Product Serviceability	DK-1743-A-VH-10-LD	Adressierung	23 AWG 120° (23 AWG 120°)
Product Supportability	DK-1743-A-VH-10-LD	Adressierung	23 AWG 120° (23 AWG 120°)
Product Reliability	DK-1743-A-VH-10-LD	Adressierung	23 AWG 120° (23 AWG 120°)
Product Durability	DK-1743-A-VH-10-LD	Adressierung	23 AWG 120° (23 AWG 120°)
Product Performance	DK-1743-A-VH-10-LD	Adressierung	23 AWG 120° (23 AWG 120°)
Product Quality	DK-1743-A-VH-10-LD	Adressierung	23 AWG 120° (23 AWG 120°)
Product Consistency	DK-1743-A-VH-10-LD	Adressierung	23 AWG 120° (23 AWG 120°)
Product Accuracy	DK-1743-A-VH-10-LD	Adressierung	23 AWG 120° (23 AWG 120°)
Product Precision	DK-1743-A-VH-10-LD	Adressierung	23 AWG 120° (23 AWG 120°)
Product Stability	DK-1743-A-VH-10-LD	Adressierung	23 AWG 120° (23 AWG 120°)
Product Flexibility	DK-1743-A-VH-10-LD	Adressierung	23 AWG 120° (23 AWG 120°)
Product Adaptability	DK-1743-A-VH-10-LD	Adressierung	23 AWG 120° (23 AWG 120°)
Product Versatility	DK-1743-A-VH-10-LD	Adressierung	23 AWG 120° (23 AWG 120°)

