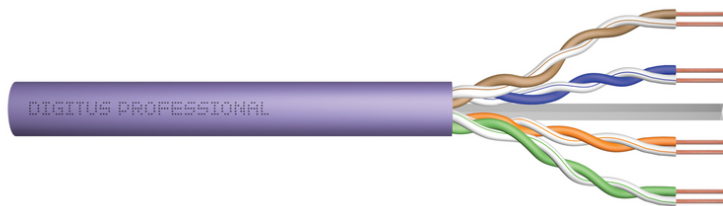


# DIGITUS Cat.6 U/UTP installation cable, 500 m, Cca

**DK-1615-VH-5**  
**EAN 4016032442257**



**CAT 6 U-UTP installation cable, 250 MHz Cca (EN 50575), AWG 23/1, 500m drum, simplex, pu**

The Digitus® Professional Cat.6 U/UTP installation cable is characterized by the following cable construction 4x2x AWG23/1 and reaches a transmission frequency up to 250 MHz. The halogen free cable jacket is conform to the standard IEC 60332-3-24, FRNC-C, LSZH-3 and CPR Euro class Cca. The cable is suitable for building structured cabling in the secondary and tertiary area. Compliant with the following standards ISO/IEC 11801, DIN EN 50173, DIN EN 50288-6-1.

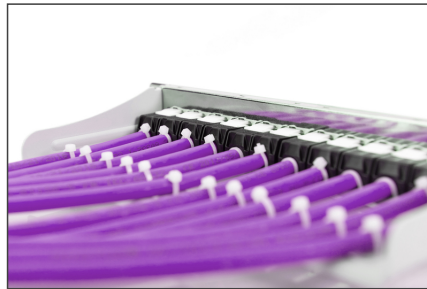
**Future-oriented standards and high-end quality for your network.**

- Physical properties:
- Conductor: Bare annealed copper, solid AWG 23/1
- Insulation: HD-PE (High Density Polyethylene)
- Total number of insulated conductors: 8, twisted in 4 pairs
- Color code: Blue-white, orange-white, green-white, brown-white
- Individual pair shield: None
- Overall shielding: None
- Outer sheath: Eca to B2ca acc. to EN 50575; LSZH
- Outer sheath diameter (nominal): 0,5 mm (Eca); 0,6 mm (Dca); 1,0 mm (Cca); 1,0 mm (B2ca)
- Outer sheath color: Purple (RAL 4005)
- Mechanical properties:
- Tensile loading: 150N max.
- Dynamic bending radius: 8x AD mm min.
- Static bending radius: 4x AD mm min.

- Shipping- and storage temperature range: -20 °C up to +60 °C
- Operating temperature range: -20 °C up to +75 °C
- Installation temperature range: 0 °C up to +50 °C
- Overall diameter Simplex (nominal): 6,1 mm (Eca); 6,3 mm (Dca); 6,8 mm (Cca); 6,8 mm (B2ca)
- Weight (kg/km): 41 kg (Eca); 42 kg (Dca); 44 kg (Cca); 44 kg (B2ca)
- Electrical properties:
- Impedance: 100±50hm @ 1 - 250MHz
- Capacitance: 40 pF/m nominal @ 800 Hz
- Capacitance unbalance (pair-ground): 1.5 pF/m max. @ 1 KHz
- Insulation resistance: 5 GOhm x km min.
- DC loop resistance: 147 Ohm/km max. (2% max. resistance unbalance)
- Voltage resistance: 72 Vdc max.
- Coupling attenuation: CA-Type 3
- Signal propagation delay: 535 nS/100 m max.
- Propagation delay: 20 nS/100 m max.
- Separating class: „b" gem. EN 50174-2
- NVP: 69%
- Assortment: Twisted Pair Installation Cables
- Category: CAT 6
- Shielding: U-UTP, unshielded
- CPR: Cca
- Length: 500 m
- Color: violet
- Jacket: LSOH
- Structure: 4 x 2 AWG 23/1, solid twisted pair

Logistics						
	Number (pcs)	Weight (kg)	Depth (cm)	Width (cm)	Height (cm)	cm³
Packaging Unit Carton	1	24.00	39.50	38.00	27.50	41,277.50
Packaging Unit Inside	1	24.00	0.00	0.00	0.00	0.00
Packaging Unit Single	1	24.00	37.00	37.00	31.00	42,439.00
Net single without Packaging	0	23.00	36.00	36.00	27.00	34,992.00

More images:



**DIGITUS**

AWG 23/1 | 250 MHz | 1 Gbit Ethernet | CAT 6 | 20°/±0.75° | LSZH | CPR class

**CAT 6 U/UTP Installation Cable, 500 m, Simplex, C<sub>ca</sub>**

**DIGITUS**

DK-1615-VH-5 // CAT 6 U/UTP Installation Cable, 500m, Simplex, C<sub>ca</sub>

**Anwendungsbereich**  
Example of use

**DIGITUS**

DK-1615-VH-5 // CAT 6 U/UTP Installation Cable, 500m, Simplex, C<sub>ca</sub>

**Kabelquerschnitt**  
Cable cross section

**DIGITUS**

Produktdaten Product Information		Physikalische Spezifikationen Physical Properties	
Bezeichnung Name	DK-1615-VH-5 // CAT 6 U/UTP Installation Cable, 500m, Simplex, C <sub>ca</sub>	Leiter Conductor	Beim Kupferkabel: 100°C/120°C, Teflonkabel: 120°C im Inneren
Hersteller Manufacturer	DIGITUS (China, Simplex, Patch, Patch, Patch, Patch)	Leitungsführung Cable routing	Keine Anforderungen
Hersteller-Teilenummer Manufacturer part number	DK-1615-VH-5 // CAT 6 U/UTP Installation Cable, 500m, Simplex, C <sub>ca</sub>	Leitungsführungsfähigkeit Cable routing capability	Keine Anforderungen
Hersteller-Teilenummer Manufacturer part number	DK-1615-VH-5 // CAT 6 U/UTP Installation Cable, 500m, Simplex, C <sub>ca</sub>	Leitungsführungsfähigkeit Cable routing capability	Keine Anforderungen
Hersteller-Teilenummer Manufacturer part number	DK-1615-VH-5 // CAT 6 U/UTP Installation Cable, 500m, Simplex, C <sub>ca</sub>	Leitungsführungsfähigkeit Cable routing capability	Keine Anforderungen

**DIGITUS**

**Leistungsleistungen Transmission Properties**

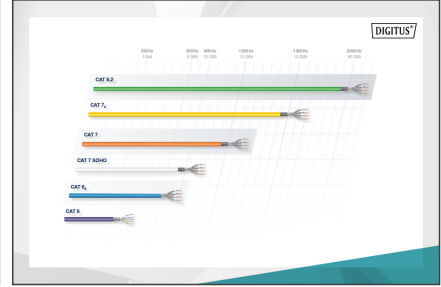
AWG	UTP	NEXT	PS-NEXT	ACR	PLR/A	PL	PLR/E	PLR/E2
24	45	45	45	45	45	45	45	45
20	55	55	55	55	55	55	55	55
16	65	65	65	65	65	65	65	65
12	75	75	75	75	75	75	75	75
8	85	85	85	85	85	85	85	85

**DIGITUS**

**Certificate**  
No. 0124/14-21-1

**Zertifikat**  
No. 0124/14-21-1

**2-Drahter-Duplex, Paare, Klasse E**  
**GHMT Type Approval**



**DIGITUS**

CFR-Einstufung	Bezeichnung	Leistungsleistungen	Abzeichen der Konformität	Zusätzliche Anforderungen
B2-UL	Sehr hoch Very high	1+	UL	• Spinnungsbildung • Klemmstellen • Kabelschichten • Regelmäßige Prüfung einzelner Drähte • Kabelschichtprüfung
C-UL	Hoch High	3	UL	• Spinnungsbildung • Klemmstellen • Kabelschichten • Regelmäßige Prüfung einzelner Drähte • Kabelschichtprüfung
D-UL	Mittel Medium	3	UL	• Spinnungsbildung • Klemmstellen • Kabelschichten • Regelmäßige Prüfung einzelner Drähte • Kabelschichtprüfung
E-UL	Gering Low	3	UL	• Spinnungsbildung • Klemmstellen • Kabelschichten • Regelmäßige Prüfung einzelner Drähte • Kabelschichtprüfung
C-UL	st1	d1	a1	

