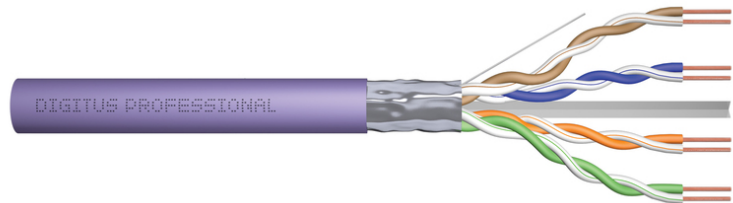


# DIGITUS Cat.6 F/UTP installation cable, 500 m, simplex, Cca

DK-1625-VH-5  
EAN 4016032442035



### CAT 6 F-UTP installation cable, 250 MHz Cca (EN 50575), AWG 23/1, 500 m drum, sx, purple

The Digitus® Professional Cat.6 F/UTP installation cable is characterized by the following cable construction 4x2x AWG23/1 and reaches a transmission frequency up to 250 MHz. The halogen free cable jacket is conform to the standard IEC 60332-3-24, FRNC-C, LSZH-1 and CPR Euro class Cca. The cable is suitable for building structured cabling in the secondary and tertiary area. Compliant with the following standards ISO/IEC 11801, DIN EN 50173, DIN EN 50288-5-1.

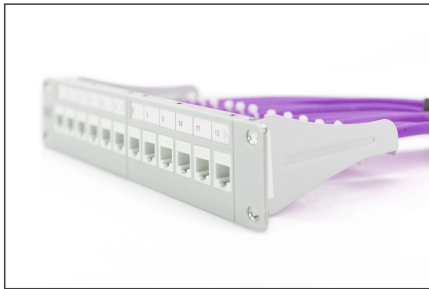
#### Future-oriented standards and high-end quality for your network.

- Physical properties:
- Conductor: Bare annealed copper, solid AWG 23/1
- Insulation: HD-PE (High Density Polyethylene)
- Total number of insulated conductors: 8, twisted in 4 pairs
- Color code: Blue-white, orange-white, green-white, brown-white
- Individual pair shield: None
- Overall shielding: Aluminum foil, providing 100% coverage, drain wire
- Outer sheath: Eca to B2ca acc. to EN 50575; LSZH
- Outer sheath diameter (nominal): 0.5 mm (Eca); 0,6 mm (Dca); 0,8 mm (Cca); 0,08 mm (B2ca)
- Outer sheath color: Purple
- Mechanical properties:
- Tensile loading: 150N max.
- Dynamic bending radius: 8x AD mm min.
- Static bending radius: 4x AD mm min.

- Shipping- and storage temperature range: -20 °C up to +60 °C
- Operating temperature range: -20 °C up to +75 °C
- Installation temperature range: 0 °C up to +50 °C
- Overall diameter Simplex (nominal): 7.0 (Eca); 7,2 mm (Dca); 7,6 mm (Cca); 7,6 mm (B2ca)
- Weight (kg/km): 46 kg (Eca); 47 kg (Dca); 48,5 kg (Cca); 48,5 kg (B2ca)
- Electrical properties:
- Impedance: 100±5 Ohm @ 1-250 MHz
- Capacitance: 45 pF/m nominal @ 800 Hz
- Capacitance unbalance (pair-ground): 1.5 pF/m max. @ 1 KHz
- Insulation resistance: 5 GOhm x km min.
- DC loop resistance: 147 Ohm/km max. (2% max. resistance unbalance)
- Voltage resistance: 72 Vdc max.
- Coupling attenuation: 40 dB
- Signal propagation delay: 535 nS/100 m max.
- Propagation delay: 20 nS/100 m max.
- Separating class: „c“ acc. to EN 50174-2
- NVP: 69%
- Assortment: Twisted Pair Installation Cables
- Category: CAT 6
- Shielding: F-UTP, foil shielding
- CPR: Cca
- Length: 500 m
- Color: violet
- Jacket: LSOH
- Structure: 4 x 2 AWG 23/1, solid twisted pair

Logistics						
	Number (pcs)	Weight (kg)	Depth (cm)	Width (cm)	Height (cm)	cm³
Packaging Unit Carton	1	28.50	50.00	50.00	22.00	55,000.00
Packaging Unit Inside	1	28.50	0.00	0.00	0.00	0.00
Packaging Unit Single	1	28.50	50.00	50.00	22.00	55,000.00
Net single without Packaging	0	27.82	50.00	50.00	22.00	55,000.00

More images:



**DIGITUS**

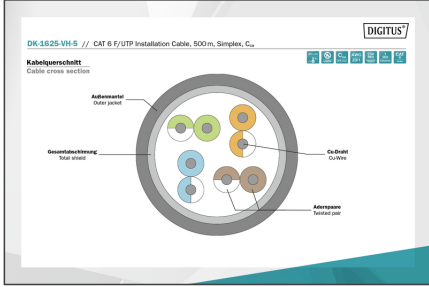
AWG 23/1  
250 MHz  
1 Gbit Ethernet  
CAT 6  
287/75°  
LSZH  
Cca  
CFL class

**CAT 6 F/UTP Installation Cable, 500m, Simplex, C<sub>ca</sub>**

**DIGITUS**

DK-1625-VH-S // CAT 6 F/UTP Installation Cable, 500m, Simplex, C<sub>ca</sub>

Anwendungsbeispiel  
Example of use



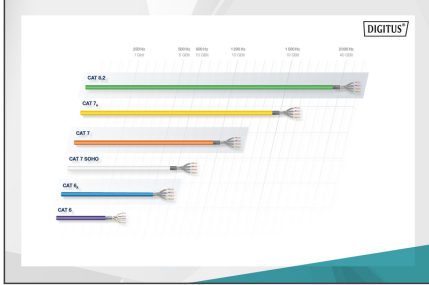
**DIGITUS**

Produktdaten Produkt Information		Physikalische Spezifikationen Physical Properties	
Bezeichnung / Part Number	DK-1625-VH-S (DK-1625-VH-S) (DK-1625-VH-S)	Standard / Standard	ISO/IEC 61888-2 (Cat. 6)
Material / Material	PVC / PVC	Standard / Standard	ISO/IEC 61888-2 (Cat. 6)
Farbe / Color	Violett / Purple	Standard / Standard	ISO/IEC 61888-2 (Cat. 6)
Abmessungen / Dimensions	23 AWG / 23 AWG	Standard / Standard	ISO/IEC 61888-2 (Cat. 6)
Leistung / Power	1 Gbit Ethernet	Standard / Standard	ISO/IEC 61888-2 (Cat. 6)
Temperaturbereich / Temperature Range	-20°C bis +75°C	Standard / Standard	ISO/IEC 61888-2 (Cat. 6)
Flammverhalten / Flamm Behavior	LSZH	Standard / Standard	ISO/IEC 61888-2 (Cat. 6)
Umweltverträglichkeit / Environmental Compatibility	Cca	Standard / Standard	ISO/IEC 61888-2 (Cat. 6)
CE-Kennzeichnung / CE Marking	CFL class	Standard / Standard	ISO/IEC 61888-2 (Cat. 6)

**DIGITUS**

Leistungsparameter Transmission Properties

MHz	CAT 6		Cat 6		Cat 6		Cat 6		Cat 6	
	Att	dB	Att	dB	Att	dB	Att	dB	Att	dB
1	12,1	19,2	12,1	19,2	12,1	19,2	12,1	19,2	12,1	19,2
2	14,4	21,5	14,4	21,5	14,4	21,5	14,4	21,5	14,4	21,5
3	16,7	23,8	16,7	23,8	16,7	23,8	16,7	23,8	16,7	23,8
4	19,0	26,1	19,0	26,1	19,0	26,1	19,0	26,1	19,0	26,1
5	21,3	28,4	21,3	28,4	21,3	28,4	21,3	28,4	21,3	28,4
6	23,6	30,7	23,6	30,7	23,6	30,7	23,6	30,7	23,6	30,7
7	25,9	33,0	25,9	33,0	25,9	33,0	25,9	33,0	25,9	33,0
8	28,2	35,3	28,2	35,3	28,2	35,3	28,2	35,3	28,2	35,3
9	30,5	37,6	30,5	37,6	30,5	37,6	30,5	37,6	30,5	37,6
10	32,8	39,9	32,8	39,9	32,8	39,9	32,8	39,9	32,8	39,9



**DIGITUS**

CE-Kennzeichnung / CE Marking

Produkttyp / Product Type

Leistungsfähigkeit / Performance

1+

3

Material / Material

23 AWG

Temperaturbereich / Temperature Range

-20°C bis +75°C

Flammverhalten / Flamm Behavior

LSZH

Umweltverträglichkeit / Environmental Compatibility

Cca

CE-Kennzeichnung / CE Marking

Cca

CE-Kennzeichnung / CE Marking

s1a

CE-Kennzeichnung / CE Marking

d1

CE-Kennzeichnung / CE Marking

a1