

# DIGITUS Cat.6A U/FTP installation cable, 500 m, duplex, Dca

DK-1624-A-VH-D-5  
EAN 4016032435853



### CAT 6A U-FTP installation cable, 500 MHz Dca (EN 50575), AWG 23/1, 500 m drum,

The Digitus® Cat.6A U/FTP installation cable is characterized by the following cable construction 4x2x AWG23/1 and reaches a transmission frequency up to 500 MHz. The halogen free cable jacket is conform to the standard IEC 60332-1, FRNC-B, LSZH-1 and CPR Euro class Dca. The cable is suitable for building structured cabling in the secondary and tertiary area. Compliant with the following standards ISO/IEC 11801, DIN EN 50173, DIN EN 50288-10-1.

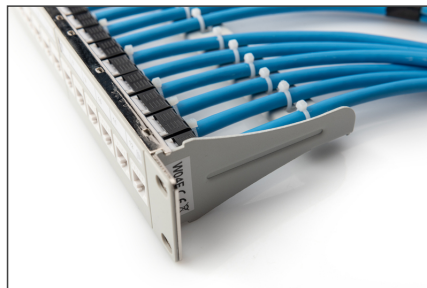
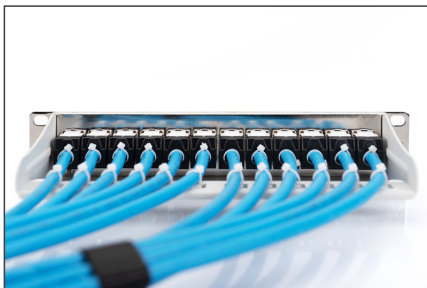
#### Future-oriented standards and high-end quality for your network.

- Physical properties:
- Conductor: Bare annealed copper, solid AWG 23/1
- System/s of AVCP: AVCP 3
- Total number of insulated conductors: 8, twisted in 4 pairs
- Color code: Blue-white, orange-white, green-white, brown-white
- Individual pair shielding: Aluminum foil, providing 100 % coverage
- Overall shielding: None, with drain wire
- Outer sheath: Eca to B2ca acc. to EN 50575; LSZH
- Outer sheath color: Light blue (RAL 5012)
- Mechanical properties:
- Tensile loading: 150N max.
- Dynamic bending radius: 8x AD mm min.
- Static bending radius: 4x AD mm min.
- Shipping- and storage temperature range: -20 °C up to +60 °C
- Operating temperature range: -20 °C up to +75 °C

- Installation temperature range: 0 °C up to +50 °C
- Overall diameter Simplex (nominal): 7.0 (Eca); 7,2 mm (Dca); 7,6 mm (Cca); 7,6 mm (B2ca)
- Weight (kg/km): 56 kg (Eca); 57 kg (Dca); 58 kg (Cca); 58 kg (B2ca)
- Electrical properties:
- Impedance: 100±15 Ohm @ 4 - 100MHz; 100±25 Ohm @100-500 MHz
- Capacitance: 45 pF/m nominal @ 1 KHz
- Capacitance unbalance (pair-ground): 1.6 pF/m max. @ 1 KHz
- Insulation resistance: 5 GOhm x km min.
- DC loop resistance: 190 Ohm/km max. (2% max. resistance unbalance)
- Voltage resistance: 72 Vdc max.
- Coupling attenuation: CA-Type 2
- Signal propagation delay: 450 nS/100 m max.
- Propagation delay: 15 nS/100 m max.
- Separating class: "c" acc. to EN 50174-2
- NVP: 70%
- Assortment: Twisted Pair Installation Cables
- Category: CAT 6A
- Shielding: U-FTP, pairs in metal foil
- CPR: Dca
- Length: 500 m
- Color: light-blue
- Jacket: LSOH
- Structure: 4 x 2 AWG 23/1, solid twisted pair

Logistics						
	Number (pcs)	Weight (kg)	Depth (cm)	Width (cm)	Height (cm)	cm³
Packaging Unit Carton	1	52.50	57.00	30.00	36.00	0.00
Packaging Unit Inside	1	52.50	0.00	0.00	0.00	0.00
Packaging Unit Single	1	52.50	0.00	0.00	0.00	0.00
Net single without Packaging	0	0.00	0.00	0.00	0.00	0.00

More images:



**DIGITUS**  
**CAT 6A U/FTP**  
**Installation Cable, 500m,**  
**Simplex, E<sub>ca</sub>**

AWG 23/1 | 500 MHz | 10 Gbit Ethernet | CAT 6A (see spec) | 20°/75° | LSZH | E<sub>ca</sub> (see spec)

**DIGITUS**  
 DK-1623-A-VH-S // CAT 6, U/FTP Installation Cable, 500m, Simplex, E<sub>ca</sub>

**Anwendungsbeispiel**  
 Example of use

DK-99265

**DIGITUS**  
 DK-1623-A-VH-S // CAT 6, U/FTP Installation Cable, 500m, Simplex, E<sub>ca</sub>

**Kabelquerschnitt**  
 Cable cross section

Adressierbare Datenpaar | Adressierbare Twisted pair  
 Un-Bündel Co-Wire  
 Abschirmung Twisted pair  
 Abschirmung Twisted pair

**DIGITUS**

Produktinformationen / Product Information	Physikalische Spezifikationen / Physical Properties
<p><b>Bestandteile / Components</b></p> <p>Produkt-Code: DK-1623-A-VH-S</p> <p>Produkt-Code: DK-1623-A-VH-S</p> <p>Produkt-Code: DK-1623-A-VH-S</p> <p>Produkt-Code: DK-1623-A-VH-S</p>	<p><b>Material</b></p> <p>Material: Polypropylen (PP) / Polypropylene (PP)</p> <p>Material: Polypropylen (PP) / Polypropylene (PP)</p> <p>Material: Polypropylen (PP) / Polypropylene (PP)</p> <p>Material: Polypropylen (PP) / Polypropylene (PP)</p>
<p><b>Technische Eigenschaften / Technical Properties</b></p> <p>Standard: EN 50173-1-2, EN 50173-2-2, EN 50173-2-3</p> <p>Standard: EN 50173-1-2, EN 50173-2-2, EN 50173-2-3</p> <p>Standard: EN 50173-1-2, EN 50173-2-2, EN 50173-2-3</p>	<p><b>Mechanische Eigenschaften / Mechanical Properties</b></p> <p>Standard: EN 50173-1-2, EN 50173-2-2, EN 50173-2-3</p> <p>Standard: EN 50173-1-2, EN 50173-2-2, EN 50173-2-3</p> <p>Standard: EN 50173-1-2, EN 50173-2-2, EN 50173-2-3</p>

**DIGITUS**

Leitungsgruppencharakteristiken / Transmission Properties											
PAIR	ATT	NCAT	PS-REIT	AN	PL-REIT	DL	SEIKET	PS-REIT	AN	PL-REIT	DL
1	31	30	30	30	30	30	30	30	30	30	30
2	31	30	30	30	30	30	30	30	30	30	30
3	31	30	30	30	30	30	30	30	30	30	30
4	31	30	30	30	30	30	30	30	30	30	30
5	31	30	30	30	30	30	30	30	30	30	30
6	31	30	30	30	30	30	30	30	30	30	30
7	31	30	30	30	30	30	30	30	30	30	30
8	31	30	30	30	30	30	30	30	30	30	30
9	31	30	30	30	30	30	30	30	30	30	30
10	31	30	30	30	30	30	30	30	30	30	30
11	31	30	30	30	30	30	30	30	30	30	30
12	31	30	30	30	30	30	30	30	30	30	30

**Interetek**

**ETL Verified Certificate of Conformity Number: 19422895CF-011**

ETL Verified Certificate of Conformity (COC) is a document that certifies that a product meets the requirements of a specific standard or regulatory requirement. It is issued by ETL Group, a leading product safety and compliance testing and certification company.

**Approved By:** [Signature]

**Approved:** [Signature]

**GHMT**

**Certificate**  
 No. 19884-21

**Zertifikat**  
 No. 19884-21

**Kategorie 6c**

**Kategorie 6c**

**GHMT Type Approval**

**DIGITUS**

**DIGITUS**

**DIGITUS**

EN Norm	Standard	Leitungsgruppenanzahl (AWG) / Number of conductor pairs (AWG)	Adaption an konfigurierbare Steile / Adaptation to configurable Steep	Zusätzliche Anforderungen / Additional requirements
B2ca	Sehr hoch / Very high	1+	<ul style="list-style-type: none"> <li>• Typischerweise</li> <li>• Typischerweise</li> <li>• Typischerweise</li> </ul>	<ul style="list-style-type: none"> <li>• Typischerweise</li> <li>• Typischerweise</li> <li>• Typischerweise</li> </ul>
Cca	Hoch / High			
Dca	Mittel / Medium			
Eca	Gering / Low	3	<ul style="list-style-type: none"> <li>• Typischerweise</li> <li>• Typischerweise</li> </ul>	

**Product Code:** Cca, s1a, d1, a1

