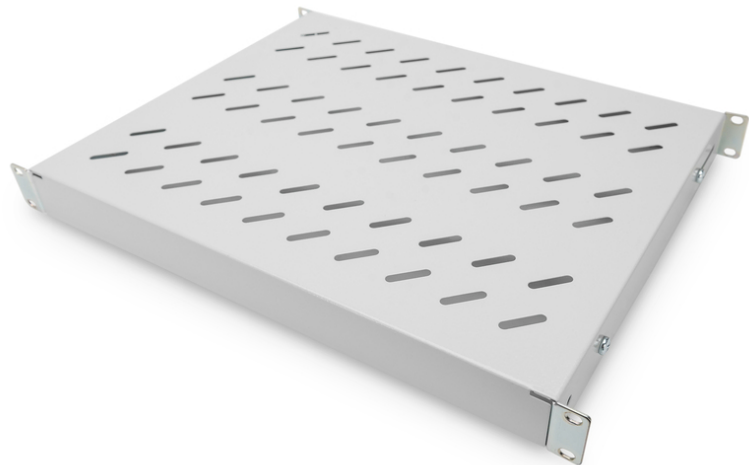


DIGITUS Shelf with Variable Rails for Fixed Mounting in 483 mm (19") Cabinets

DN-97644
 EAN 4016032364962



1U fixed shelf for 600 mm depth racks 44x483x358 mm, adjust. 350-550 mm depth, grey

The shelves for fixed mounting can be installed easy on the four 483 mm (19") profile rails of your 483 mm (19") network- or server cabinet. Due to their stable, perforated steel sheet with a load capacity of 50 kg, they are the optimal surface for components which are not 483 mm (19") suitable. The fixing rails are can be adjusted if needed.

- for fixed mounting on the four 483 mm (19") profile rails
- sturdy, perforated steel sheet
- incl. fixing material, M6

- 4-point fixing (front- and rear 19" profile rails)
- Color: light grey, RAL 7035
- Load capacity: 50 kg
- Mounting type: Adjustable mounting rails
- Units: 1
- Weight: 2.38 kg
- Inch form factor (IEC 60297): 482.6 mm (19")
- Suitable cabinet depth: 600 mm

Package contents

- Installation set (screws, cage nuts, washers)

| Logistics | | | | | | |
|------------------------------|--------------|-------------|------------|------------|-------------|-----------------|
| | Number (pcs) | Weight (kg) | Depth (cm) | Width (cm) | Height (cm) | cm ³ |
| Packaging Unit Carton | 12 | 30.40 | 59.50 | 50.00 | 46.60 | 0.00 |
| Packaging Unit Inside | 1 | 2.53 | 37.50 | 50.00 | 5.50 | 0.00 |
| Packaging Unit Single | 1 | 2.53 | 37.50 | 50.00 | 5.50 | 0.00 |
| Net single without Packaging | 0 | 2.38 | 34.70 | 48.20 | 4.40 | 0.00 |

More images:

