

DIGITUS Cat.6A U/FTP installation cable, 100 m, simplex, Eca

DK-1623-A-VH-1
EAN 4016032344117



CAT 6A U-FTP installation cable, 500 MHz Eca (EN 50575), AWG 23/1, 100m paper box, sx, blue

The Digitus® Cat.6A U/FTP installation cable is characterized by the following cable construction 4x2x AWG23/1 and reaches a transmission frequency up to 500 MHz. The halogen free cable jacket is conform to the standard IEC 60332-1, FRNC-B, LSZH-1 and CPR Euro class Eca. The cable is suitable for building structured cabling in the secondary and tertiary area. Compliant with the following standards ISO/IEC 11801, DIN EN 50173, DIN EN 50288-10-1.

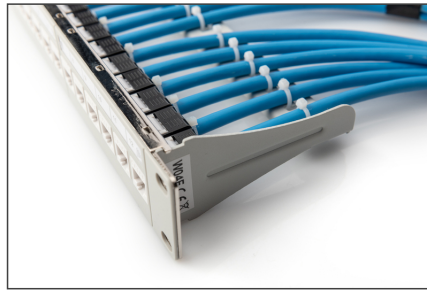
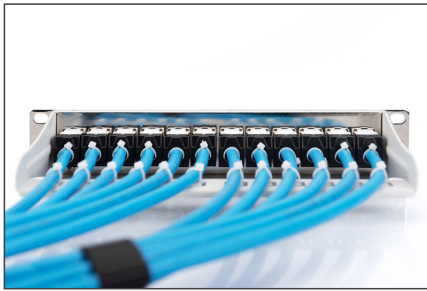
Future-oriented standards and high-end quality for your network.

- Physical properties:
- Conductor: Bare annealed copper, solid AWG 23/1
- System/s of AVCP: AVCP 3
- Total number of insulated conductors: 8, twisted in 4 pairs
- Color code: Blue-white, orange-white, green-white, brown-white
- Individual pair shielding: Aluminum foil, providing 100 % coverage
- Overall shielding: None, with drain wire
- Outer sheath: Eca to B2ca acc. to EN 50575; LSZH
- Outer sheath color: Light blue (RAL 5012)
- Mechanical properties:
- Tensile loading: 150N max.
- Dynamic bending radius: 8x AD mm min.
- Static bending radius: 4x AD mm min.
- Shipping- and storage temperature range: -20 °C up to +60 °C
- Operating temperature range: -20 °C up to +75 °C

- Installation temperature range: 0 °C up to +50 °C
- Overall diameter Simplex (nominal): 7.0 (Eca); 7,2 mm (Dca); 7,6 mm (Cca); 7,6 mm (B2ca)
- Weight (kg/km): 56 kg (Eca); 57 kg (Dca); 58 kg (Cca); 58 kg (B2ca)
- Electrical properties:
- Impedance: 100±15 Ohm @ 4 - 100MHz; 100±25 Ohm @100-500 MHz
- Capacitance: 45 pF/m nominal @ 1 KHz
- Capacitance unbalance (pair-ground): 1.6 pF/m max. @ 1 KHz
- Insulation resistance: 5 GOhm x km min.
- DC loop resistance: 190 Ohm/km max. (2% max. resistance unbalance)
- Voltage resistance: 72 Vdc max.
- Coupling attenuation: CA-Type 2
- Signal propagation delay: 450 nS/100 m max.
- Propagation delay: 15 nS/100 m max.
- Separating class: "c" acc. to EN 50174-2
- NVP: 70%
- Assortment: Twisted Pair Installation Cables
- Category: CAT 6A
- Shielding: U-FTP, pairs in metal foil
- CPR: Eca
- Length: 100 m
- Color: light-blue
- Jacket: LSOH
- Structure: 4 x 2 AWG 23/1, solid twisted pair

Logistics						
	Number (pcs)	Weight (kg)	Depth (cm)	Width (cm)	Height (cm)	cm³
Packaging Unit Carton	1	4.50	33.00	32.00	11.00	11,616.00
Packaging Unit Inside	1	4.50	33.00	32.00	11.00	11,616.00
Packaging Unit Single	1	4.50	33.00	32.00	11.00	11,616.00
Net single without Packaging	0	0.00	0.00	0.00	0.00	0.00

More images:



CAT 6a U/FTP Installation Cable, 100 m, Simplex, E_{ca}

DK-1623-A-VH-1 // CAT 6, U/FTP Installation Cable, 100m, Simplex, E_{ca}

Anwendungsbeispiel
Example of use

DK-1623-A-VH-1 // CAT 6, U/FTP Installation Cable, 100m, Simplex, E_{ca}

Kabelquerschnitt
Cable cross section

Produktdaten Product Information		Physikalische Spezifikationen Physical Properties	
Hersteller / Manufacturer	Digitus (China, Taiwan, Hong Kong, Singapore)	Leiter / Conductor	Neun Kupferleiter (9x23 AWG) (Twisted) (9x 0.25mm²) (9x 23 AWG) (Twisted)
AWG / AWG	23/1	Isolierung / Insulation	PE (Polyethylen) (PE) (Polyethylene)
Bandbreite / Bandwidth	500 MHz	Isolierungsdicke / Insulation thickness	0.25mm (0.010") (0.25mm) (0.010")
Standard / Standard	ISO/IEC 61888-1, ISO/IEC 61888-2, ISO/IEC 61888-3, ISO/IEC 61888-4, ISO/IEC 61888-5, ISO/IEC 61888-6, ISO/IEC 61888-7, ISO/IEC 61888-8, ISO/IEC 61888-9, ISO/IEC 61888-10, ISO/IEC 61888-11, ISO/IEC 61888-12, ISO/IEC 61888-13, ISO/IEC 61888-14, ISO/IEC 61888-15, ISO/IEC 61888-16, ISO/IEC 61888-17, ISO/IEC 61888-18, ISO/IEC 61888-19, ISO/IEC 61888-20, ISO/IEC 61888-21, ISO/IEC 61888-22, ISO/IEC 61888-23, ISO/IEC 61888-24, ISO/IEC 61888-25, ISO/IEC 61888-26, ISO/IEC 61888-27, ISO/IEC 61888-28, ISO/IEC 61888-29, ISO/IEC 61888-30, ISO/IEC 61888-31, ISO/IEC 61888-32, ISO/IEC 61888-33, ISO/IEC 61888-34, ISO/IEC 61888-35, ISO/IEC 61888-36, ISO/IEC 61888-37, ISO/IEC 61888-38, ISO/IEC 61888-39, ISO/IEC 61888-40, ISO/IEC 61888-41, ISO/IEC 61888-42, ISO/IEC 61888-43, ISO/IEC 61888-44, ISO/IEC 61888-45, ISO/IEC 61888-46, ISO/IEC 61888-47, ISO/IEC 61888-48, ISO/IEC 61888-49, ISO/IEC 61888-50, ISO/IEC 61888-51, ISO/IEC 61888-52, ISO/IEC 61888-53, ISO/IEC 61888-54, ISO/IEC 61888-55, ISO/IEC 61888-56, ISO/IEC 61888-57, ISO/IEC 61888-58, ISO/IEC 61888-59, ISO/IEC 61888-60, ISO/IEC 61888-61, ISO/IEC 61888-62, ISO/IEC 61888-63, ISO/IEC 61888-64, ISO/IEC 61888-65, ISO/IEC 61888-66, ISO/IEC 61888-67, ISO/IEC 61888-68, ISO/IEC 61888-69, ISO/IEC 61888-70, ISO/IEC 61888-71, ISO/IEC 61888-72, ISO/IEC 61888-73, ISO/IEC 61888-74, ISO/IEC 61888-75, ISO/IEC 61888-76, ISO/IEC 61888-77, ISO/IEC 61888-78, ISO/IEC 61888-79, ISO/IEC 61888-80, ISO/IEC 61888-81, ISO/IEC 61888-82, ISO/IEC 61888-83, ISO/IEC 61888-84, ISO/IEC 61888-85, ISO/IEC 61888-86, ISO/IEC 61888-87, ISO/IEC 61888-88, ISO/IEC 61888-89, ISO/IEC 61888-90, ISO/IEC 61888-91, ISO/IEC 61888-92, ISO/IEC 61888-93, ISO/IEC 61888-94, ISO/IEC 61888-95, ISO/IEC 61888-96, ISO/IEC 61888-97, ISO/IEC 61888-98, ISO/IEC 61888-99, ISO/IEC 61888-100		

Leitungsparameter Transmission Properties

Paar / Pair	AWG / AWG	Wicklungsdichte / Turns per inch	Wicklungsdichte / Turns per inch	Wicklungsdichte / Turns per inch	Wicklungsdichte / Turns per inch	Wicklungsdichte / Turns per inch	Wicklungsdichte / Turns per inch	Wicklungsdichte / Turns per inch	Wicklungsdichte / Turns per inch
1	24	30	30	30	30	30	30	30	30
2	24	30	30	30	30	30	30	30	30
3	24	30	30	30	30	30	30	30	30
4	24	30	30	30	30	30	30	30	30
5	24	30	30	30	30	30	30	30	30
6	24	30	30	30	30	30	30	30	30
7	24	30	30	30	30	30	30	30	30
8	24	30	30	30	30	30	30	30	30
9	24	30	30	30	30	30	30	30	30

Intertek ETL Verified Certificate of Conformance Number: 1142282007401

Product: CAT 6 U/FTP 100m Ethernet Cable

Model: DK-1623-A-VH-1

Quantity: 1000000

Location: Digitus, Taiwan

Date issued: April 11, 2014

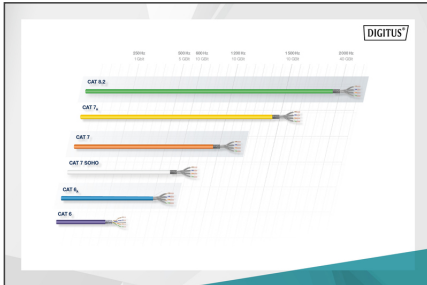
Certificate No. 16688-11

Zertifikat No. 16688-11

Category 6a

Category 6a

GHMT Type Approval



CE Marking

B2 - Safe high strength

C_{ca} - High fire

D_{ca} - Metal shield

E_{ca} - Gassing low

1+

3

C_{ca} s1a d1 a1

