

# DIGITUS Cat.6A U/UTP installation cable, 305 m, simplex, Eca

DK-1613-A-VH-305  
EAN 4016032344100



## CAT 6A U-UTP installation cable, 500 MHz Eca (EN 50575), AWG 23/1, 305 m drum, sx, blue

The Digitus® Cat.6A U/UTP installation cable is characterized by the following cable construction 4x2x AWG23/1 and reaches a transmission frequency up to 500 MHz. The halogen free cable jacket is conform to the standard IEC 60332-1, FRNC-B, LSZH-1 and CPR Euro class Eca. The cable is suitable for building structured cabling in the secondary and tertiary area. Compliant with the following standards ISO/IEC 11801, DIN EN 50173, DIN EN 50288-11-1.

### Future-oriented standards and high-end quality for your network.

- Physical properties:
- Conductor: Bare annealed copper, olid AWG 23/1
- System/s of AVCP: AVCP 3
- Insulation: HD-PE (High Density Polyethylene)
- Total number of insulated conductors: 8, twisted in 4 pairs
- Color code: Blue-white, orange-white, green-white, brown-white
- Individual pair shield: None
- Overall shielding: None
- Outer sheath: Eca to B2ca acc. to EN 50575; LSZH
- Outer sheath diameter (nominal): 0,5 mm (Eca); 0,6 mm (Dca); 1,2 mm (Cca); 1,4 mm (B2ca)
- Outer sheath color: Light blue (RAL 5012)
- Mechanical properties:
- Tensile loading: 150N max.
- Dynamic bending radius: 8x AD mm min.
- Static bending radius: 4x AD mm min.
- Shipping- and storage temperature range: -20 °C up to +60 °C

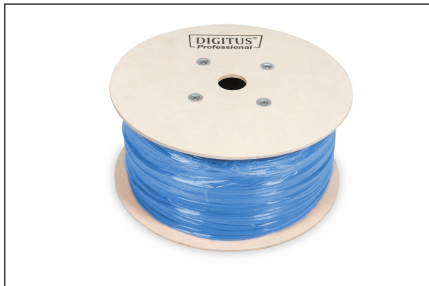
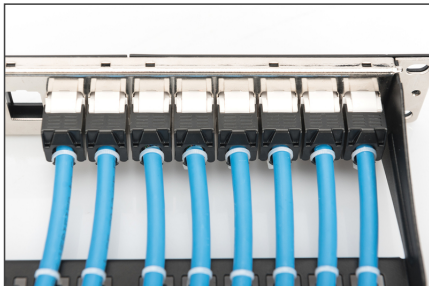
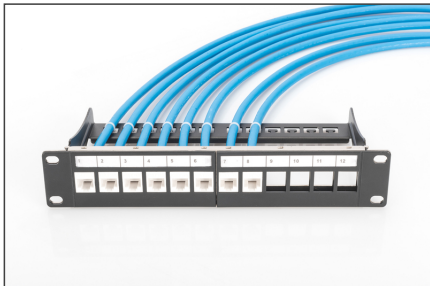
- Operating temperature range: -20 °C up to +75 °C
- Installation temperature range: 0 °C up to +50 °C
- Overall diameter Simplex (nominal): 7,1 mm (Eca); 7,3 mm (Dca); 7,4 mm (Cca); 7,6 mm (B2ca)
- Weight (kg/km): 53 kg (Eca); 54 kg (Dca); 55 kg (Cca); 56 kg (B2ca)
- Electrical properties:
- Impedance: 100±5Ohm @ 1 - 600MHz
- Capacitance: 40 pF/m nominal @ 1 KHz
- Capacitance unbalance (pair-ground): 1.6 pF/m max. @ 1 KHz
- Insulation resistance: 5 GOhm x km min.
- DC loop resistance: 147 Ohm/km max. (2% max. resistance unbalance)
- Voltage resistance: 72 Vdc max.
- Coupling attenuation: CA-Type 2
- Signal propagation delay: 450 nS/100 m max.
- Propagation delay: 10 nS/100 m max.
- Separating class: "c" acc. to EN 50174-2
- NVP: 70%

### Attributes

- Assortment: Twisted Pair Installation Cables
- Category: CAT 6A
- Shielding: U-UTP, unshielded
- CPR: Eca
- Length: 305 m
- Color: light-blue
- Jacket: LSOH
- Structure: 4 x 2 AWG 23/1, solid twisted pair

Logistics						
	Number (pcs)	Weight (kg)	Depth (cm)	Width (cm)	Height (cm)	cm <sup>3</sup>
Packaging Unit Carton	1	17.00	39.00	39.00	27.00	41,067.00
Packaging Unit Inside	1	17.00	39.00	39.00	27.00	41,067.00
Packaging Unit Single	1	17.00	39.00	39.00	27.00	41,067.00
Net single without Packaging	0	0.00	0.00	0.00	0.00	0.00

More images:



**CAT 6<sub>a</sub> U/UTP Installation Cable, 305 m, Simplex, E<sub>ca</sub>**

- AWG 23/1
- 500 MHz
- 10 Gbit Ethernet
- 20°/75°
- LSZH
- E<sub>ca</sub> CPRI class

**DK-1613-A-VH-305 // CAT 6<sub>a</sub> U/UTP Installation Cable, 305 m, Simplex, E<sub>ca</sub>**

Anwendungsbeispiel  
Example of use

**DK-1613-A-VH-305 // CAT 6<sub>a</sub> U/UTP Installation Cable, 305 m, Simplex, E<sub>ca</sub>**

Kabelquerschnitt  
Cable cross section

**Produktinformationen Product Information**

<b>Bestellnummer</b>	DK-1613-A-VH-305	<b>Produktname</b>	CAT 6 <sub>a</sub> U/UTP Installation Cable, 305 m, Simplex, E <sub>ca</sub>
<b>Hersteller</b>	DIGITUS	<b>Material</b>	100% Kupfer, 100% PVC, 100% Polyester
<b>Material</b>	100% Kupfer, 100% PVC, 100% Polyester	<b>Abmessungen</b>	AWG 23/1, 500 MHz, 10 Gbit Ethernet, 20°/75°, LSZH, E <sub>ca</sub> CPRI class
<b>Abmessungen</b>	AWG 23/1, 500 MHz, 10 Gbit Ethernet, 20°/75°, LSZH, E <sub>ca</sub> CPRI class	<b>Wichtige Eigenschaften</b>	100% Kupfer, 100% PVC, 100% Polyester

**Technische Eigenschaften Technical Properties**

<b>Standard</b>	ISO/IEC 61898	<b>Lebensdauer</b>	10 Jahre
<b>Material</b>	100% Kupfer, 100% PVC, 100% Polyester	<b>Abmessungen</b>	AWG 23/1, 500 MHz, 10 Gbit Ethernet, 20°/75°, LSZH, E <sub>ca</sub> CPRI class
<b>Abmessungen</b>	AWG 23/1, 500 MHz, 10 Gbit Ethernet, 20°/75°, LSZH, E <sub>ca</sub> CPRI class	<b>Wichtige Eigenschaften</b>	100% Kupfer, 100% PVC, 100% Polyester

**Mechanische Eigenschaften Mechanical Properties**

<b>Spannung</b>	100 N	<b>Bruchdehnung</b>	100%
<b>Bruchdehnung</b>	100%	<b>Bruchkraft</b>	100 N
<b>Bruchkraft</b>	100 N	<b>Bruchenergie</b>	100 J

**Leistungsmerkmale Transmission Properties**

Strecke	100m	150m	200m	250m	300m	350m	400m	450m	500m
100m	100	100	100	100	100	100	100	100	100
150m	100	100	100	100	100	100	100	100	100
200m	100	100	100	100	100	100	100	100	100
250m	100	100	100	100	100	100	100	100	100
300m	100	100	100	100	100	100	100	100	100
350m	100	100	100	100	100	100	100	100	100
400m	100	100	100	100	100	100	100	100	100
450m	100	100	100	100	100	100	100	100	100
500m	100	100	100	100	100	100	100	100	100

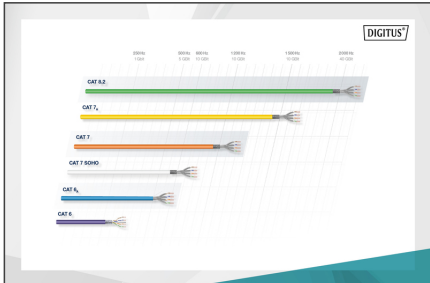
**intertek**

RoHS Verified Certificate of Compliance Number: 10000000000000000000

intertek logo

RoHS Verified Certificate of Compliance Number: 10000000000000000000

intertek logo



**DIGITUS**

CEP-Bauweise  
Construction type

Drainagestruktur  
Drainage structure

Leitungsanordnungsart  
Cable arrangement

Adaptieren an verdrillte Seile  
Adaptation to twisted pairs

Zusammenfassung  
Summary

**B2<sub>ca</sub>** Saftig hoch  
Soft high

**C<sub>ca</sub>** Hoch  
High

**D<sub>ca</sub>** Metall  
Metal

**E<sub>ca</sub>** Gering  
Low

**1+**

**3**

**C<sub>ca</sub> s1a d1 a1**

