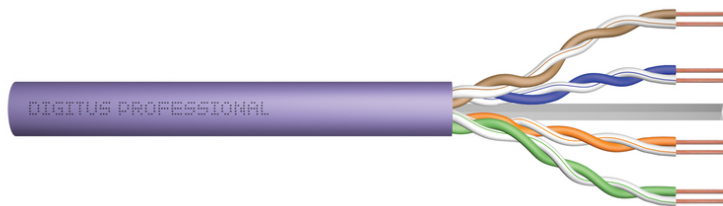


# DIGITUS Cat.6 U/UTP installation cable, 100 m, simplex, Eca

DK-1613-VH-1  
EAN 4016032343653



### CAT 6 U-UTP installation cable, 250 MHz Eca (EN 50575), AWG 23/1, 100m paper box, sx, pu

The Digitus Cat 6 U/UTP installation cable is designed for use in the structured data center and the building cabling according to ISO/IEC 11801, DIN EN 50288-6-1, DIN EN 50173, IEC 60332-1. The cable is perfectly suitable for the transmission of both analog and digital data and also supports POE. The shielding structure is composed of single shielded pairs with a tinned copper braid, which ensures excellent shielding and electrical values.

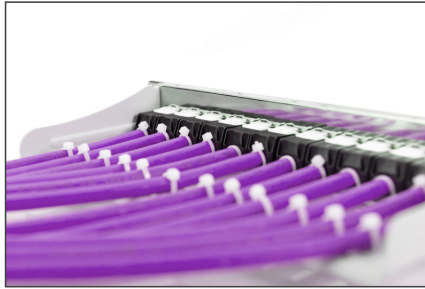
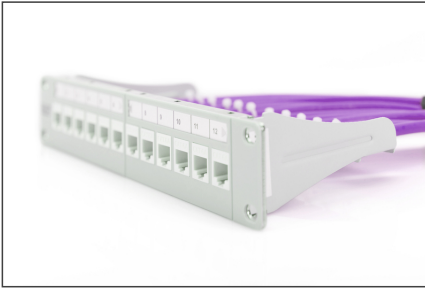
#### Future-oriented standards and high-end quality for your network.

- Physical properties:
- Conductor: Bare annealed copper, solid AWG 23/1
- System/s of AVCP: AVCP 3
- Insulation: HD-PE (High Density Polyethylene)
- Total number of insulated conductors: 8, twisted in 4 pairs
- Color code: Blue-white, orange-white, green-white, brown-white
- Individual pair shield: None
- Overall shielding: None
- Outer sheath: Eca to B2ca acc. to EN 50575; LSZH
- Outer sheath diameter (nominal): 0,5 mm (Eca); 0,6 mm (Dca); 1,0 mm (Cca); 1,0 mm (B2ca)
- Outer sheath color: Purple (RAL 4005)
- Mechanical properties:
- Tensile loading: 150N max.
- Dynamic bending radius: 8x AD mm min.
- Static bending radius: 4x AD mm min.

- Shipping- and storage temperature range: -20 °C up to +60 °C
- Operating temperature range: -20 °C up to +75 °C
- Installation temperature range: 0 °C up to +50 °C
- Overall diameter Simplex (nominal): 6,1 mm (Eca); 6,3 mm (Dca); 6,8 mm (Cca); 6,8 mm (B2ca)
- Weight (kg/km): 41 kg (Eca); 42 kg (Dca); 44 kg (Cca); 44 kg (B2ca)
- Electrical properties:
- Impedance: 100±50hm @ 1 - 250MHz
- Capacitance: 40 pF/m nominal @ 800 Hz
- Capacitance unbalance (pair-ground): 1.5 pF/m max. @ 1 KHz
- Insulation resistance: 5 GOhm x km min.
- DC loop resistance: 147 Ohm/km max. (2% max. resistance unbalance)
- Voltage resistance: 72 Vdc max.
- Coupling attenuation: CA-Type 3
- Signal propagation delay: 535 nS/100 m max.
- Propagation delay: 20 nS/100 m max.
- Separating class: „b" gem. EN 50174-2
- NVP: 69%
- Assortment: Twisted Pair Installation Cables
- Category: CAT 6
- Shielding: U-UTP, unshielded
- CPR: Eca
- Length: 100 m
- Color: violet
- Jacket: LSOH
- Structure: 4 x 2 AWG 23/1, solid twisted pair

Logistics						
	Number (pcs)	Weight (kg)	Depth (cm)	Width (cm)	Height (cm)	cm³
Packaging Unit Carton	1	4.00	31.00	30.50	12.00	11,346.00
Packaging Unit Inside	1	4.00	10.00	28.00	28.00	7,840.00
Packaging Unit Single	1	4.00	10.00	28.00	28.00	7,840.00
Net single without Packaging	0	0.00	0.00	0.00	0.00	0.00

More images:

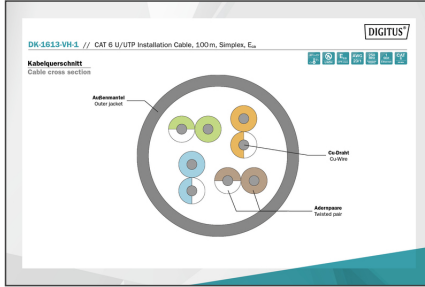


**CAT 6 U/UTP Installation Cable, 100 m, Simplex, E<sub>ca</sub>**

- AWG 23/1
- 250 MHz
- 1 Gbit Ethernet
- CAT 6
- 20°/1.75°
- LSZH
- E<sub>ca</sub> CPR class

**DK-1613-VH-1 // CAT 6 U/UTP Installation Cable, 100m, Simplex, E<sub>ca</sub>**

**Anwendungsbeispiel**  
Example of use



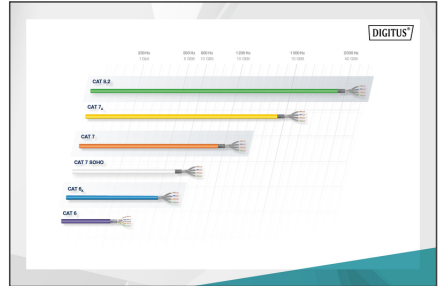
Produktinformation Product Information		Physikalische Spezifikationen Physical Properties	
Herstellername / Manufacturer: DIGITUS	Hersteller / Manufacturer: DIGITUS	Material / Material: PVC	Material / Material: PVC
Artikelnummer / Article Number: 00000000000000000000	Artikelnummer / Article Number: 00000000000000000000	Abmessungen / Dimensions: 100m	Abmessungen / Dimensions: 100m
Name / Name: CAT 6 U/UTP Installation Cable, 100m, Simplex, Eca	Name / Name: CAT 6 U/UTP Installation Cable, 100m, Simplex, Eca	Material / Material: PVC	Material / Material: PVC
Abmessungen / Dimensions: 100m	Abmessungen / Dimensions: 100m	Material / Material: PVC	Material / Material: PVC

AWG	WT	WT	WT	WT	WT	WT	WT	WT	WT
18	1.80	1.80	1.80	1.80	1.80	1.80	1.80	1.80	1.80
20	2.00	2.00	2.00	2.00	2.00	2.00	2.00	2.00	2.00
22	2.20	2.20	2.20	2.20	2.20	2.20	2.20	2.20	2.20
24	2.40	2.40	2.40	2.40	2.40	2.40	2.40	2.40	2.40
26	2.60	2.60	2.60	2.60	2.60	2.60	2.60	2.60	2.60
28	2.80	2.80	2.80	2.80	2.80	2.80	2.80	2.80	2.80
30	3.00	3.00	3.00	3.00	3.00	3.00	3.00	3.00	3.00
32	3.20	3.20	3.20	3.20	3.20	3.20	3.20	3.20	3.20
34	3.40	3.40	3.40	3.40	3.40	3.40	3.40	3.40	3.40
36	3.60	3.60	3.60	3.60	3.60	3.60	3.60	3.60	3.60

**Certificate**  
No. 1613-VH-1

**Zertifikat**  
No. 1613-VH-1

**2 Conductor Overall, Taper, Class E**  
**GHMT Type Approval**



**GHMT**

**CEP Conformance**

B2 <sub>ca</sub>	Stahl hoch / High steel	1+	• Spannungsbilanz • Temperaturstabilität • Beständigkeit gegen Verschleiß
C <sub>ca</sub>	Holz / Wood	3	• Spannungsbilanz • Temperaturstabilität • Beständigkeit gegen Verschleiß
D <sub>ca</sub>	Mittel / Middle		
E <sub>ca</sub>	Gering / Low		

• **Stahl hoch / High steel**  
• **Holz / Wood**  
• **Mittel / Middle**  
• **Gering / Low**

**CEP Conformance**  
C<sub>ca</sub> s1a d1 a1

