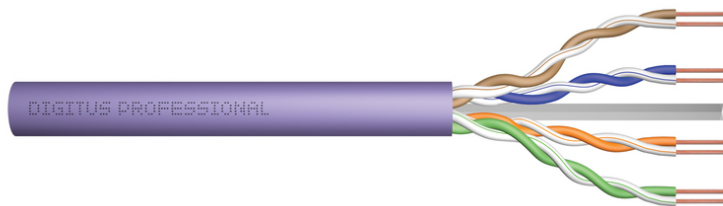


DIGITUS Cat.6 U/UTP installation cable, 305 m, simplex, Eca

DK-1613-VH-305
EAN 4016032324553



CAT 6 U-UTP installation cable, 250 MHz Eca (EN 50575), AWG 23/1, 305 m paper box, sx, pu

The Digitus Cat 6 U/UTP installation cable is designed for use in the structured data center and the building cabling according to ISO/IEC 11801, DIN EN 50288-6-1, DIN EN 50173, IEC 60332-1. The cable is perfectly suitable for the transmission of both analog and digital data and also supports POE and POE+.

Future-oriented standards and high-end quality for your network.

- Physical properties:
- Conductor: Bare copper wire, AWG 23/1
- Insulation: HD-PE (High Density Polyethylene)
- Total number of insulated conductors: 8, twisted into 4 pairs
- Color code: Blue-white, orange-white, green-white, brown-white
- Shielding of the individual pairs: None
- Overall shielding: None
- Outer sheath: Eca to B2ca in accordance with EN 50575; LSZH
- Outer sheath thickness nominal): 0.5 mm (Eca); 0.6 mm (Dca); 1.0 mm (Cca); 1.0 mm (B2ca)
- Outer casing color: Violet (RAL 4005)
- Mechanical properties:
- Strain relief: 150N max.
- Dynamic bending radius: 8x AD mm min.
- Static bending radius: 4x AD mm min.
- Transport and storage temperature range: -20 °C to +60 °C
- Operating temperature range: -20 °C to +75 °C

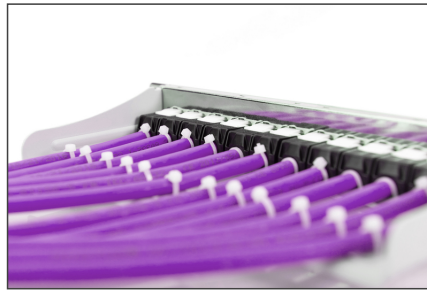
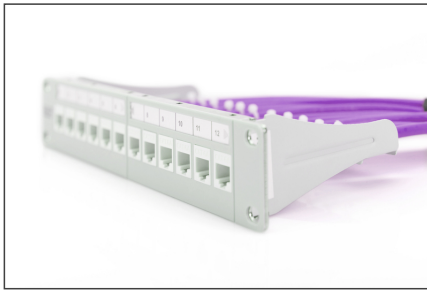
- Installation temperature range: 0 °C to +50 °C
- Outer diameter simplex (nominal): 6.1 mm (Eca); 6.3 mm (Dca); 6.8 mm (Cca); 6.8 mm (B2ca)
- Weight (kg/km): 41 kg (Eca); 42 kg (Dca); 44 kg (Cca); 44 kg (B2ca)
- Electrical properties:
- Impedance: 100±50Ω @ 1 - 250MHz
- Capacitance: 40 pF/m nominal @ 800 Hz
- Capacitance unbalance (pair-earth): 1.5 pF/m max. @ 1 KHz
- Insulation resistance: 5 GΩm x km min.
- Loop resistance: 147 Ωm/km max. (2% max. unbalanced resistance)
- Operating voltage: 72 Vdc max.
- Coupling attenuation: CA-Type 3
- Phase delay: 535 nS/100 m max.
- Time delay: 20 nS/100 m max.
- Isolation class: "b" according to EN 50174-2
- NVP: 69%

Attributes

- Assortment: Twisted Pair Installation Cables
- Category: CAT 6
- Shielding: U-UTP, unshielded
- CPR: Eca
- Length: 305 m
- Color: violet
- Jacket: LSOH
- Structure: 4 x 2 AWG 23/1, solid twisted pair

Logistics						
	Number (pcs)	Weight (kg)	Depth (cm)	Width (cm)	Height (cm)	cm ³
Packaging Unit Carton	1	12.30	45.00	44.50	25.00	50,062.50
Packaging Unit Inside	1	12.30	45.00	44.50	25.00	50,062.50
Packaging Unit Single	1	12.30	45.00	44.50	25.00	50,062.50
Net single without Packaging	0	0.00	0.00	0.00	0.00	0.00

More images:



DIGITUS

- AWG 23/1
- 250 MHz
- 1 Gbit Ethernet
- CAT 6
- 20°/± 75°
- 6
- LSZH
- E_{ca} CPR class

CAT 6 U/UTP Installation Cable, 305 m, Simplex, E_{ca}

DIGITUS

DK-1613-VH-305 // CAT 6 U/UTP Installation Cable, 305m, Simplex, E_{ca}

Anwendungsbereich
Example of use

DIGITUS

DK-1613-VH-305 // CAT 6 U/UTP Installation Cable, 305m, Simplex, E_{ca}

Kabelquerschnitt
Cable cross section

Adressierte Daten-paar
Un-shielded Cat6a
Adressierte Twisted-pair

DIGITUS

Produktdaten Product Information		Physikalische Spezifikationen Physical Properties	
Herstellername	Digitus (China, Taiwan, Hong Kong, Malaysia)	Leiter	Nein (Kategorie 6E/6A/7E/7A/7B/7C/7D/7E/7F/7G/7H/7I/7J/7K/7L/7M/7N/7O/7P/7Q/7R/7S/7T/7U/7V/7W/7X/7Y/7Z/7AA/7AB/7AC/7AD/7AE/7AF/7AG/7AH/7AI/7AJ/7AK/7AL/7AM/7AN/7AO/7AP/7AQ/7AR/7AS/7AT/7AU/7AV/7AW/7AX/7AY/7AZ/7BA/7BB/7BC/7BD/7BE/7BF/7BG/7BH/7BI/7BJ/7BK/7BL/7BM/7BN/7BO/7BP/7BQ/7BR/7BS/7BT/7BU/7BV/7BW/7BX/7BY/7BZ/7CA/7CB/7CC/7CD/7CE/7CF/7CG/7CH/7CI/7CJ/7CK/7CL/7CM/7CN/7CO/7CP/7CQ/7CR/7CS/7CT/7CU/7CV/7CW/7CX/7CY/7CZ/7DA/7DB/7DC/7DD/7DE/7DF/7DG/7DH/7DI/7DJ/7DK/7DL/7DM/7DN/7DO/7DP/7DQ/7DR/7DS/7DT/7DU/7DV/7DW/7DX/7DY/7DZ/7EA/7EB/7EC/7ED/7EE/7EF/7EG/7EH/7EI/7EJ/7EK/7EL/7EM/7EN/7EO/7EP/7EQ/7ER/7ES/7ET/7EU/7EV/7EW/7EX/7EY/7EZ/7FA/7FB/7FC/7FD/7FE/7FF/7FG/7FH/7FI/7FJ/7FK/7FL/7FM/7FN/7FO/7FP/7FQ/7FR/7FS/7FT/7FU/7FV/7FW/7FX/7FY/7FZ/7GA/7GB/7GC/7GD/7GE/7GF/7GG/7GH/7GI/7GJ/7GK/7GL/7GM/7GN/7GO/7GP/7GQ/7GR/7GS/7GT/7GU/7GV/7GW/7GX/7GY/7GZ/7HA/7HB/7HC/7HD/7HE/7HF/7HG/7HH/7HI/7HJ/7HK/7HL/7HM/7HN/7HO/7HP/7HQ/7HR/7HS/7HT/7HU/7HV/7HW/7HX/7HY/7HZ/7IA/7IB/7IC/7ID/7IE/7IF/7IG/7IH/7II/7IJ/7IK/7IL/7IM/7IN/7IO/7IP/7IQ/7IR/7IS/7IT/7IU/7IV/7IW/7IX/7IY/7IZ/7JA/7JB/7JC/7JD/7JE/7JF/7JG/7JH/7JI/7JJ/7JK/7JL/7JM/7JN/7JO/7JP/7JQ/7JR/7JS/7JT/7JU/7JV/7JW/7JX/7JY/7JZ/7KA/7KB/7KC/7KD/7KE/7KF/7KG/7KH/7KI/7KJ/7KK/7KL/7KM/7KN/7KO/7KP/7KQ/7KR/7KS/7KT/7KU/7KV/7KW/7KX/7KY/7KZ/7LA/7LB/7LC/7LD/7LE/7LF/7LG/7LH/7LI/7LJ/7LK/7LL/7LM/7LN/7LO/7LP/7LQ/7LR/7LS/7LT/7LU/7LV/7LW/7LX/7LY/7LZ/7MA/7MB/7MC/7MD/7ME/7MF/7MG/7MH/7MI/7MJ/7MK/7ML/7MM/7MN/7MO/7MP/7MQ/7MR/7MS/7MT/7MU/7MV/7MW/7MX/7MY/7MZ/7NA/7NB/7NC/7ND/7NE/7NF/7NG/7NH/7NI/7NJ/7NK/7NL/7NM/7NN/7NO/7NP/7NQ/7NR/7NS/7NT/7NU/7NV/7NW/7NX/7NY/7NZ/7OA/7OB/7OC/7OD/7OE/7OF/7OG/7OH/7OI/7OJ/7OK/7OL/7OM/7ON/7OO/7OP/7OQ/7OR/7OS/7OT/7OU/7OV/7OW/7OX/7OY/7OZ/7PA/7PB/7PC/7PD/7PE/7PF/7PG/7PH/7PI/7PJ/7PK/7PL/7PM/7PN/7PO/7PP/7PQ/7PR/7PS/7PT/7PU/7PV/7PW/7PX/7PY/7PZ/7QA/7QB/7QC/7QD/7QE/7QF/7QG/7QH/7QI/7QJ/7QK/7QL/7QM/7QN/7QO/7QP/7QQ/7QR/7QS/7QT/7QU/7QV/7QW/7QX/7QY/7QZ/7RA/7RB/7RC/7RD/7RE/7RF/7RG/7RH/7RI/7RJ/7RK/7RL/7RM/7RN/7RO/7RP/7RQ/7RR/7RS/7RT/7RU/7RV/7RW/7RX/7RY/7RZ/7SA/7SB/7SC/7SD/7SE/7SF/7SG/7SH/7SI/7SJ/7SK/7SL/7SM/7SN/7SO/7SP/7SQ/7SR/7SS/7ST/7SU/7SV/7SW/7SX/7SY/7SZ/7TA/7TB/7TC/7TD/7TE/7TF/7TG/7TH/7TI/7TJ/7TK/7TL/7TM/7TN/7TO/7TP/7TQ/7TR/7TS/7TT/7TU/7TV/7TW/7TX/7TY/7TZ/7UA/7UB/7UC/7UD/7UE/7UF/7UG/7UH/7UI/7UJ/7UK/7UL/7UM/7UN/7UO/7UP/7UQ/7UR/7US/7UT/7UU/7UV/7UW/7UX/7UY/7UZ/7VA/7VB/7VC/7VD/7VE/7VF/7VG/7VH/7VI/7VJ/7VK/7VL/7VM/7VN/7VO/7VP/7VQ/7VR/7VS/7VT/7VU/7VV/7VW/7VX/7VY/7VZ/7WA/7WB/7WC/7WD/7WE/7WF/7WG/7WH/7WI/7WJ/7WK/7WL/7WM/7WN/7WO/7WP/7WQ/7WR/7WS/7WT/7WU/7WV/7WW/7WX/7WY/7WZ/7XA/7XB/7XC/7XD/7XE/7XF/7XG/7XH/7XI/7XJ/7XK/7XL/7XM/7XN/7XO/7XP/7XQ/7XR/7XS/7XT/7XU/7XV/7XW/7XX/7XY/7XZ/7YA/7YB/7YC/7YD/7YE/7YF/7YG/7YH/7YI/7YJ/7YK/7YL/7YM/7YN/7YO/7YP/7YQ/7YR/7YS/7YT/7YU/7YV/7YW/7YX/7YY/7YZ/7ZA/7ZB/7ZC/7ZD/7ZE/7ZF/7ZG/7ZH/7ZI/7ZJ/7ZK/7ZL/7ZM/7ZN/7ZO/7ZP/7ZQ/7ZR/7ZS/7ZT/7ZU/7ZV/7ZW/7ZX/7ZY/7ZZ

DIGITUS

Leistungsmerkmale Transmission Properties

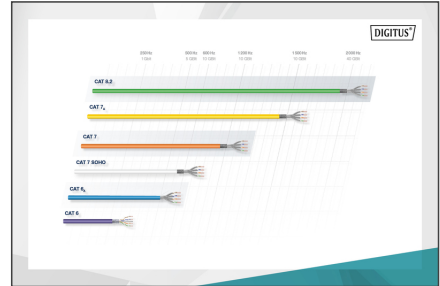
AWG	UTP	STP	PL	PLS	PLSX	PLSX	PLSX	PLSX	PLSX
24	45	45	45	45	45	45	45	45	45
20	50	50	50	50	50	50	50	50	50
16	55	55	55	55	55	55	55	55	55
12	60	60	60	60	60	60	60	60	60
8	65	65	65	65	65	65	65	65	65
4	70	70	70	70	70	70	70	70	70
0	75	75	75	75	75	75	75	75	75

DIGITUS

Certificate
No. 15143-18-1-2

Zertifikat
No. 15143-18-1-2

3 Connector Classes, Type E
GHMT Type Approval



DIGITUS

CEP Conformance

CEP Conformance	Bestandteile für einzelne Kabel	Leistungsmerkmale (MHz)	Adressierte Konformitäts-Daten	Zusatzanforderungen
B2 _{ca}	Schleif hoch	1+	• Typenprüfung • Typenprüfung • Typenprüfung	• Typenprüfung • Typenprüfung • Typenprüfung
C _{ca}	Hoch		• Typenprüfung • Typenprüfung • Typenprüfung	• Typenprüfung • Typenprüfung • Typenprüfung
D _{ca}	Mittel	3	• Typenprüfung • Typenprüfung • Typenprüfung	• Typenprüfung • Typenprüfung • Typenprüfung
E _{ca}	Gering		• Typenprüfung • Typenprüfung • Typenprüfung	• Typenprüfung • Typenprüfung • Typenprüfung

• Typenprüfung
• Typenprüfung
• Typenprüfung

