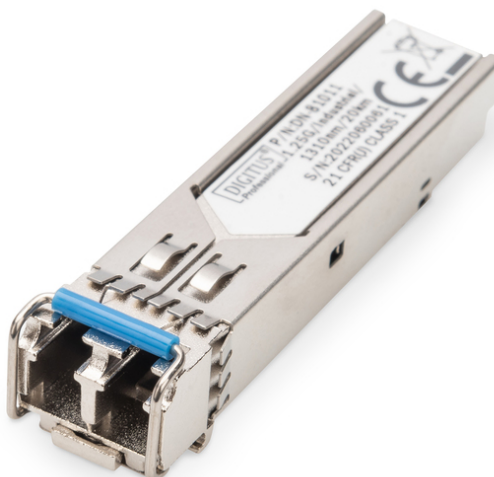


# DIGITUS Industrial mini GBIC (SFP) Module, 1.25 Gbps, 20km

DN-81011  
EAN 4016032307587



### 1.25 Gbps SFP Module, Singlemode, Industrial vers. LC Duplex Connector, 1310nm, up to 20km

The DIGITUS® mini GBIC (SFP) transceiver modules offer highest quality and reliability. Whether from switch to switch, converter to switch, converter to converter or any else application: The wide product range of DIGITUS® modules makes possible a flexible usage of the fiber technology. The conformity to the MSA (Multi Source Agreement) standard ensures a compatibility to third party manufacturers.

#### The plug and play fiber connection

- Mini GBIC SFP (Small Form Factor Pluggable) module
- Compatible with the following manufacturers: Allied Telesis, Allnet, Avaya, CISCO, D-Link, Edimax, FINISAR, FORCE 10, Gigamon, Intellinet, KTI Networks, Level One, PLANET, Tenda, TP-Link, TRENDnet, Mikrotik, ENTERASYS, RIVERSTONE, Unifi, Ubiquiti, ZyXEL, ZTE
- High quality and excellent reliability
- 1.25 Gbps Maximum Data Rate
- Compliant to IEEE 802.3z Gigabit Standard
- Class 1 laser product compliant with EN 60825-1
- Easy plug-and-play installation
- MSA (Multi Source Agreement) compliant

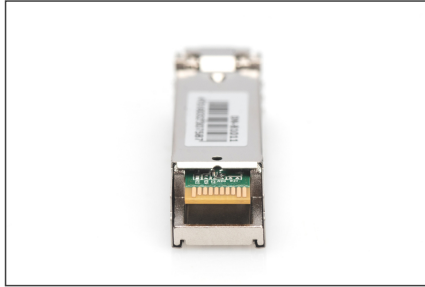
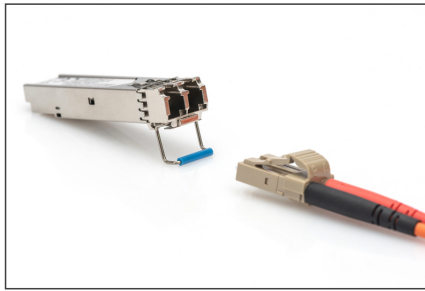
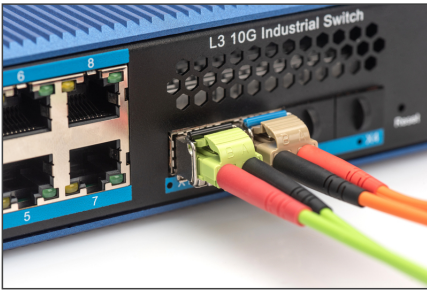
- Hot pluggable
- Connector: 1x LC Duplex
- 1000Base-LX - For Long Haul
- Wavelength: 1310nm
- Transmission power: minimum -8 dBm, maximum -3 dBm
- Sensitivity receiving power: minimum -24 dBm
- For a Distance of up to 20km
- Suitable for 09/125µm Singlemode Fiber Cables
- Safe fast-locking mechanism
- 3.3V power supply
- Operating temperature: -40 °C - +85 °C
- Mode: Singlemode
- Connector: LC
- Distance (km): 20
- Wavelength: 1310 nm
- DDM Support: no
- Broadcasting Mode: Unidirectional
- Manufacturer compatibility: Universal (MSA), Cisco
- Ethernet speed: Gigabit

#### Package contents

- SFP module

Logistics						
	Number (pcs)	Weight (kg)	Depth (cm)	Width (cm)	Height (cm)	cm <sup>3</sup>
Packaging Unit Carton	240	8.50	50.00	29.00	54.50	79,025.00
Packaging Unit Inside	30	1.06	7.00	20.00	30.00	4,200.00
Packaging Unit Single	1	0.03	3.00	12.00	9.00	324.00
Net single without Packaging	0	0.00	0.00	0.00	0.00	0.00

More images:



SFP Modules							
Product Number	RAM Code	Speed	Distance	Connector	Mounting	Operating Temperature	Industrial Version
<b>Fast Ethernet</b>							
DM-4001	4298020040	1.0 Gbps	2 km	LC Multimode Duplex	191mm	0 to +70 °C	✓
DM-4002	4298020070	1.0 Gbps	550 m	LC Singlemode Duplex	191mm	0 to +70 °C	✓
DM-4004	4298020070	1.0 Gbps	550 m	LC Singlemode Duplex	191mm	0 to +70 °C	✓
<b>10G Ethernet</b>							
<b>10G Ethernet</b>							
DM-4005	4298020080	10 Gbps	100 m	LC Multimode Duplex	191mm	0 to +70 °C	✓
DM-4006	4298020080	10 Gbps	200 m	LC Singlemode Duplex	191mm	0 to +70 °C	✓
DM-4007	4298020080	10 Gbps	200 m	LC Singlemode Duplex	191mm	0 to +70 °C	✓
DM-4008	4298020090	10 Gbps	200 m	LC Singlemode Duplex	191mm	0 to +70 °C	✓
DM-4009	4298020090	10 Gbps	200 m	LC Singlemode Duplex	191mm	0 to +70 °C	✓
DM-4010	4298020100	10 Gbps	200 m	LC Multimode Duplex	191mm	0 to +70 °C	✓
DM-4011	4298020100	10 Gbps	200 m	LC Multimode Duplex	191mm	0 to +70 °C	✓
DM-4012	4298020100	10 Gbps	200 m	LC Singlemode Duplex	191mm	0 to +70 °C	✓
DM-4013	4298020100	10 Gbps	200 m	LC Singlemode Duplex	191mm	0 to +70 °C	✓
DM-4014	4298020100	10 Gbps	200 m	LC Singlemode Duplex	191mm	0 to +70 °C	✓
DM-4015	4298020100	10 Gbps	200 m	LC Singlemode Duplex	191mm	0 to +70 °C	✓
DM-4016	4298020100	10 Gbps	200 m	LC Singlemode Duplex	191mm	0 to +70 °C	✓
DM-4017	4298020100	10 Gbps	200 m	LC Singlemode Duplex	191mm	0 to +70 °C	✓
DM-4018	4298020100	10 Gbps	200 m	LC Singlemode Duplex	191mm	0 to +70 °C	✓
DM-4019	4298020100	10 Gbps	200 m	LC Singlemode Duplex	191mm	0 to +70 °C	✓
DM-4020	4298020100	10 Gbps	200 m	LC Singlemode Duplex	191mm	0 to +70 °C	✓