

# DIGITUS Fiber Optic Singlemode Patch Cord, LC / LC

DK-2933-01  
EAN 4016032248910



**FO patch cord, duplex, LC to LC SM OS2 09/125 μ, 1 m**

FO patch cord, duplex, LC to LC, SM OS2 09/125 μ, 1 m

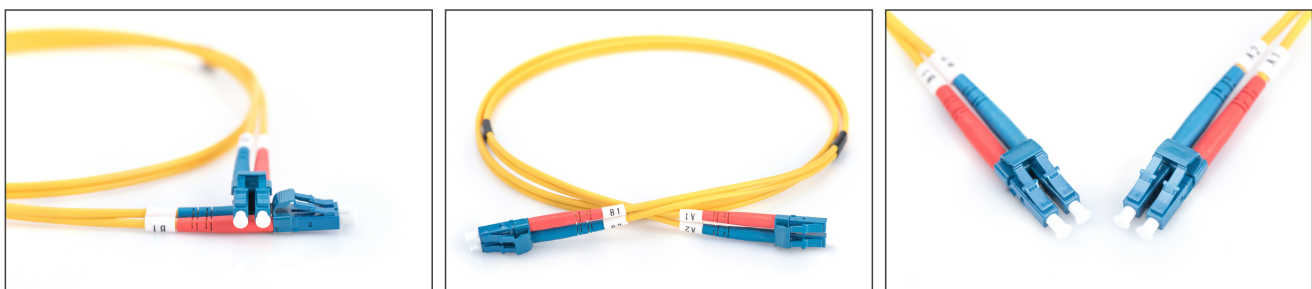
**Future-oriented standards and high-end quality for your network.**

- Duplex cable
- LSOH
- Connector with ceramic ferrule
- Cable diameter 2 mm
- Single packed with test-report
- Assortment: Fiber Optic Patch Cables
- Boot: single-color

- Cable diameter: 2 mm
- Cable type: I-VH 2E9/125μ
- Color cable: yellow
- Connector 1: LC
- Connector 2: LC
- Fiber class: OS2
- Fiber diameter: 9/125μ
- Mode: Singlemode
- Packaging: DIGITUS Polybag
- Length: 1 m

| Logistics                    |              |             |            |            |             |                 |
|------------------------------|--------------|-------------|------------|------------|-------------|-----------------|
|                              | Number (pcs) | Weight (kg) | Depth (cm) | Width (cm) | Height (cm) | cm <sup>3</sup> |
| Packaging Unit Carton        | 200          | 8.00        | 60.00      | 38.00      | 32.00       | 0.00            |
| Packaging Unit Inside        | 25           | 1.00        | 18.00      | 19.50      | 14.00       | 0.00            |
| Packaging Unit Single        | 1            | 0.04        | 1.50       | 20.00      | 30.00       | 900.00          |
| Net single without Packaging | 0            | 0.02        | 17.00      | 16.00      | 1.50        | 408.00          |

**More images:**



|                     |                 |      |          |      |
|---------------------|-----------------|------|----------|------|
| Part No.            | DK-2933-01      |      |          |      |
| Lenght              | 1 m             |      |          |      |
| Cable Type          | Duplex SM 9/125 |      | OS2 LSZH |      |
|                     | END A           |      | END B    |      |
| Connector Type      | LC              |      | LC       |      |
| Insertion Loss (dB) | 0.12            | 0.15 | 0.15     | 0.19 |
| Return Loss (dB)    | 51.8            | 53.2 | 51.1     | 50.7 |
| Q.C.                | PASS            |      |          |      |