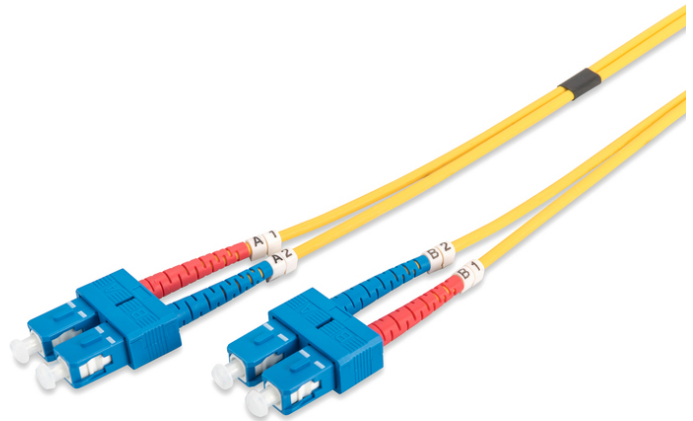


# DIGITUS Cavo patch monomodale LWL, SC/SC

**DK-2922-10**  
**EAN 4016032248781**



**FO patch cord, duplex, SC to SC SM OS2 09/125 æ, 10 m**

Cavo patch in fibra ottica, duplex, da SC a SC, SM OS2 09/125 µ, 10 m

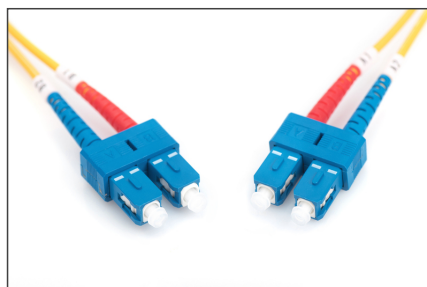
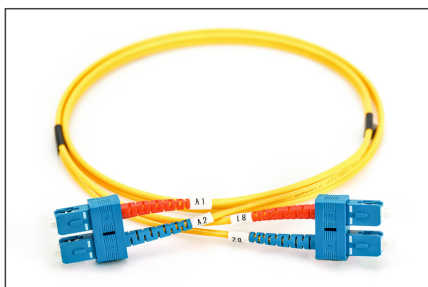
**Le migliori prestazioni e qualità della connessione per la vostra rete.**

- Cavo Duplex
- LSOH
- Spina con giunto in ceramica
- Diametro del cavo 2 mm
- Confezionate singolarmente con certificato di collaudo
- Assortimento: Cavi patch in fibra ottica

- Classe fibra: OS2
- Colore cavo: giallo
- Connettore 1: SC
- Connettore 2: SC
- Diametro del cavo: 2 mm
- Diametro della fibra: 9/125µ
- Imballaggio: Busta in plastica DIGITUS
- Modalità: Monomodale
- Protezione: monocoloro
- Tipo di cavo: I-VH 2E9/125µ
- Lunghezza: 10 m

| Logistics                    |              |             |            |            |             |           |
|------------------------------|--------------|-------------|------------|------------|-------------|-----------|
|                              | Number (pcs) | Weight (kg) | Depth (cm) | Width (cm) | Height (cm) | cm³       |
| Packaging Unit Carton        | 40           | 7.66        | 61.00      | 41.00      | 31.00       | 77,531.00 |
| Packaging Unit Inside        | 1            | 0.19        | 30.00      | 20.00      | 3.00        | 1,800.00  |
| Packaging Unit Single        | 1            | 0.19        | 30.00      | 20.00      | 3.00        | 1,800.00  |
| Net single without Packaging | 0            | 0.17        | 18.00      | 17.00      | 3.00        | 918.00    |

**More images:**



|                     |                 |      |          |      |
|---------------------|-----------------|------|----------|------|
| Part No.            | DK-2922-10      |      |          |      |
| Lenght              | 10 m            |      |          |      |
| Cable Type          | Duplex SM 9/125 |      | OS2 LSZH |      |
|                     | END A           |      | END B    |      |
| Connector Type      | SC              |      | SC       |      |
| Insertion Loss (dB) | 0.11            | 0.15 | 0.15     | 0.19 |
|                     | 53.7            | 50.9 | 52.8     | 51.4 |
| Return Loss (dB)    |                 |      |          |      |
| Q.C.                | PASS            |      |          |      |

