

# DIGITUS Fiber Optic Singlemode Patch Cord, SC / SC

DK-2922-01  
EAN 4016032248736



**FO patch cord, duplex, SC to SC SM OS2 09/125 μ, 1 m**

FO patch cord, duplex, SC to SC, SM OS2 09/125 μ, 1 m

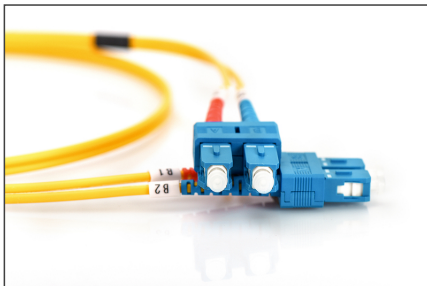
**Future-oriented standards and high-end quality for your network.**

- Duplex cable
- LSOH
- Connector with ceramic ferrule
- Cable diameter 2 mm
- Single packed with test-report
- Assortment: Fiber Optic Patch Cables
- Boot: single-color

- Cable diameter: 2 mm
- Cable type: I-VH 2E9/125μ
- Color cable: yellow
- Connector 1: SC
- Connector 2: SC
- Fiber class: OS2
- Fiber diameter: 9/125μ
- Mode: Singlemode
- Packaging: DIGITUS Polybag
- Length: 1 m

| Logistics                    |              |             |            |            |             |                 |
|------------------------------|--------------|-------------|------------|------------|-------------|-----------------|
|                              | Number (pcs) | Weight (kg) | Depth (cm) | Width (cm) | Height (cm) | cm <sup>3</sup> |
| Packaging Unit Carton        | 200          | 10.58       | 60.50      | 37.00      | 31.50       | 70,512.80       |
| Packaging Unit Inside        | 25           | 1.32        | 18.00      | 19.50      | 14.00       | 4,914.00        |
| Packaging Unit Single        | 1            | 0.05        | 2.00       | 20.00      | 30.00       | 1,200.00        |
| Net single without Packaging | 0            | 0.03        | 24.00      | 19.00      | 2.00        | 912.00          |

**More images:**



|                     |                 |      |          |      |
|---------------------|-----------------|------|----------|------|
| Part No.            | DK-2922-01      |      |          |      |
| Length              | 1 m             |      |          |      |
| Cable Type          | Duplex SM 9/125 |      | OS2 LSZH |      |
|                     | END A           |      | END B    |      |
| Connector Type      | SC              |      | SC       |      |
| Insertion Loss (dB) | 0.11            | 0.15 | 0.15     | 0.19 |
| Return Loss (dB)    | 53.7            | 50.9 | 52.8     | 51.4 |
| Q.C.                | PASS            |      |          |      |

