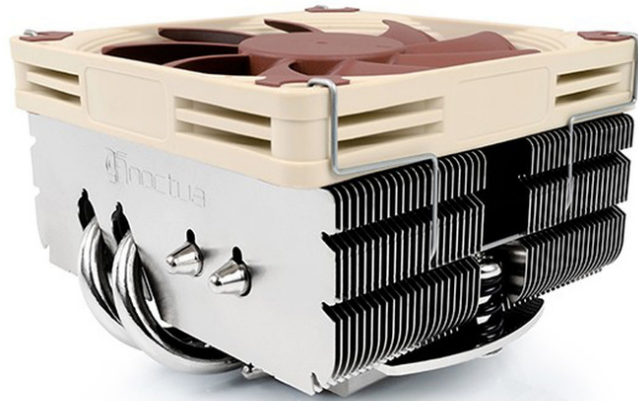


# NOCTUA Noctua NH-L9x65

**NOC-NH-L9X65**  
**EAN 4716123315629**



The NH-L9x65 is a taller, performance-enhanced version of Noctua's award-winning NH-L9 low-profile coolers. With 65 instead of 37mm height and four instead of two heatpipes, the NH-L9x65 is more powerful than its smaller siblings yet retains their 95x95mm footprint, which guarantees 100% RAM and PCIe compatibility on Intel based ITX mainboards and makes the cooler more convenient to work with as it doesn't overhang near-socket connectors. Thanks to the highly optimised NF-A9x14 premium fan that supports fully automatic speed control via PWM, the NH-L9x65 runs remarkably quiet. Topped off with the professional SecuFirm2™ multi-socket mounting system for Intel and AMD, Noctua's renowned NT-H1 thermal compound and 6 years manufacturer's warranty, the NH-L9x65 fuses everything users have come to expect from Noctua's larger coolers into a compact premium package for space restricted systems. Caution: The NH-L9x65 is a highly-compact low-profile quiet cooler designed for use in small form factor cases and HTPC environments. While it provides first rate performance in its class, it is not suitable for overclocking and should be used with care on CPUs with more than 84W TDP (Thermal Design Power). Please consult our TDP guidelines to find out whether the NH-L9x65 is recommended for your CPU. Scope of Delivery: Low-Noise Adaptor (L.N.A.) NT-H1 high-grade thermal compound SecuFirm2™ Mounting Kit Noctua Metal Case-Badge Fan

specifications: Model Noctua NF-A9x14 PWM Bearing SSO2 Max. Rotational Speed (+/- 10%) 2500 RPM Max. Rotational Speed with L.N.A. (+/- 10%) 1800 RPM Min. Rotational Speed (PWM, +/-20%) 600 RPM Max. Airflow 57,5 m³/h Max. Airflow with L.N.A. 40,8 m³/h Max. Acoustical Noise 23,6 dB(A) Max. Acoustical Noise with L.N.A. 14,8 dB(A) Input Power 2,52 W Voltage Range 12 V MTBF > 150.000 h

- Socket compatibility Intel LGA2011-0 & LGA2011-3(Square ILM), LGA1156, LGA1155, LGA1150 & AMD AM2, AM2+, AM3, AM3+, FM1, FM2, FM2+ (backplate required)
- Height (without fan) 51 mm
- Width (without fan) 95 mm
- Depth (without fan) 95 mm
- Height (with fan) 65 mm
- Width (with fan) 95 mm
- Depth (with fan) 95 mm
- Weight (without fan) 340 g
- Weight (with fan) 413 g
- Material Copper (base and heat-pipes), aluminium (cooling fins), soldered joints & nickel plating
- Max. TDP see TDP guide
- Fan compatibility 92x92x14, 92x92x25

Logistics						
	Number (pcs)	Weight (kg)	Depth (cm)	Width (cm)	Height (cm)	cm³
Packaging Unit Carton	12	0.00	0.00	0.00	0.00	0.00
Packaging Unit Inside	0	0.00	0.00	0.00	0.00	0.00
Packaging Unit Single	1	0.99	0.00	0.00	0.00	0.00
Net single without Packaging	0	0.99	0.00	0.00	0.00	0.00

More images:

