

# Planet 24-Port Layer 2 Managed Gigabit Ethernet Switch

PL-GS-4210-24T2S  
EAN 4711605280785



## Planet 19 Inch Switch, 24 x RJ45 Gigabit, 2 x SFP, Managed

Fanless 26 Port Gigabit Ethernet Switch. 24x 10/100/1000Base-T (RJ45), Auto MDI/MDI-X, 2 x SFP slots for MFB/MGB modules (100/1000 Mbps), ESD protection, internal power supply, power consumption max. 14 watts. Extensive management functions such as VLAN, RSTP, MSTP, LACP, ACL, QoS, Bandwidth Control, IGMP Snooping, Broadcast/Unicast/Multicast Storm Control and much more. Web Management, SNMP, console, IPv4/IPv6. Weight 2.1 kg, dimensions 445 x 207 x 45 mm (1U).

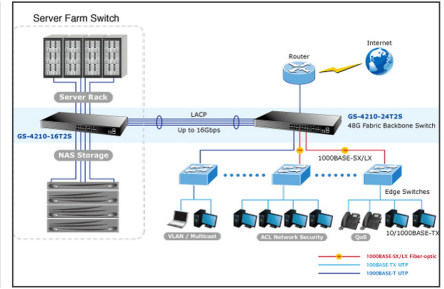
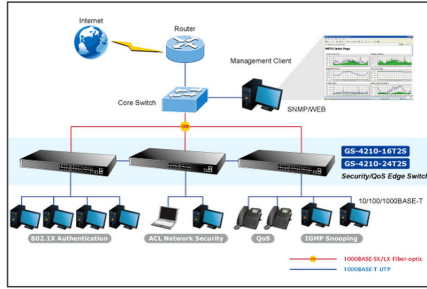
### Highest bandwidth and performance for professional demands. Superior manageability via Web!

- 24-Port 10/100/1000Base-T Gigabit RJ45 copper
- 2x 100/1000Base-X mini-GBIC/SFP slots
- RJ45 console interface for switch basic management and setup
- Reset button for system management
- Hardware based 10/100Mbps, half / full duplex and 1000Mbps full duplex mode
- IEEE 802.3x flow control for full duplex operation and back pressure for half duplex operation

- 9K Jumbo Frame Size support
- Protocol: CSMA/CD
- Supports VLAN (IEEE 802.1Q Tagged VLAN, Provider Bridging (VLAN Q-in-Q) support (IEEE 802.1ad), Protocol VLAN, Voice VLAN, Private VLAN, Management VLAN, GVRP)
- Supports Spanning Tree Protocol (STP, IEEE 802.1D Spanning Tree Protocol, RSTP, IEEE 802.1w Rapid Spanning Tree Protocol, IEEE 802.1s Multiple Spanning Tree Protocol, STP BDU Guard, BPDU Filtering and BPDU Forwarding)
- Supports Link Aggregation (IEEE 802.3ad Link Aggregation Control Protocol (LACP), cisco-ether-channel (Static Trunk), maximum 8 Trunk groups, up to 8 ports per Trunk group)
- Provides port mirror (many-to-1)
- Industrial usage: no
- Managed: yes
- Outdoorsuitable: no
- PoE (Power over Ethernet): no
- Protection against vanadism: no
- VLAN: yes

Logistics						
	Number (pcs)	Weight (kg)	Depth (cm)	Width (cm)	Height (cm)	cm <sup>3</sup>
Packaging Unit Carton	4	8.40	54.00	24.00	47.00	60.91
Packaging Unit Inside	1	2.55	52.00	23.00	9.00	10.76
Packaging Unit Single	1	2.55	52.00	23.00	9.00	10.76
Net single without Packaging	0	0.00	0.00	0.00	0.00	0.00

**More images:**



**EU responsible person**

EU based economic operator ensuring the product complies with the required regulations.

ASSMANN Electronic GmbH  
Gewerbepark 8  
Kalsdorf bei Graz, Austria  
<https://www.assmann24h.at>  
[office@assmann24h.at](mailto:office@assmann24h.at)