

DIGITUS Wall Mounting Cabinet SOHO PRO - 483 mm (19") - 540x400 mm (WxD)

DN-49207
 EAN 4016032493761



19" 12U wall mounting cabinet, SOHO PRO 595 x 540 x 400 mm, black

Whether for private areas, office or sub-distribution units with limited space: With the compact 483 mm (19") solutions from the SOHO PRO series, you can install your network wherever you like. The wall housings available in four rack units (4 rack units, 7 rack units, 9 rack units, 12 rack units) are equipped with a full glass door as well as a cable entry in the roof and floor. A pair of galvanized 483 mm (19") profile rails labeled with easy-to-read rack units are installed on the inside. Their depth can be adjusted. Each cabinet features a robust steel design made of up to 1.5 mm thick sheet steel. Coloring is done with electrostatic powder coating in the standard colors gray (RAL 7035) or jet black (RAL 9005). The door hinges can be switched. The network are unassembled on delivery, in an optimized flat pack. Installation takes just a few steps and is extremely easy thanks to the step-by-step instructions included.

The DIGITUS® Wall Housing SOHO PRO series is characterized by efficient delivery in an optimized flat pack as well as particularly user-friendly installation.

- Protection class IP20
- Lockable safety glass door
- 200° door opening angle
- 1-point locking on the front door

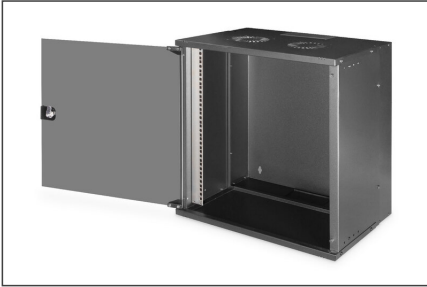
- 483 mm (19") profile rails on the front, mounted on the front inside the cabinet, galvanized
- 483 mm (19") profile rails are adjustable in depth
- 1.1 - 1.5 thick sheet steel with high load capacity, powder-coated
- Cable entry with plastic cover in roof and floor
- Ventilation slits for active and passive ventilation
- Installation depth for components max.: 327 mm
- Product dimensions (H x W x D): 595 x 540 x 400 mm
- Cabinet type: Wall mounting cabinet
- Color: black, RAL 9005
- Depth: 400 mm
- Front door: Glass door, single opening
- Load capacity: 60 kg
- Side panels: Both sides
- Units: 12
- Width: 540 mm
- IP protection class: IP20
- Mounted: no

Package contents

- Installation set (screws, captive nuts, washers)
- 2x Keys
- 1x QIG

Logistics						
	Number (pcs)	Weight (kg)	Depth (cm)	Width (cm)	Height (cm)	cm ³
Packaging Unit Carton	1	0.00	0.00	0.00	0.00	0.00
Packaging Unit Inside	0	0.00	0.00	0.00	0.00	0.00
Packaging Unit Single	1	13.69	0.00	0.00	0.00	0.00
Net single without Packaging	0	12.63	0.00	0.00	0.00	0.00

More images:



DN-49207
Wall Mounting Cabinet 50Hx 600
450mm (19") - 560x400mm (WD)

DIGITUS

- Slide the top panel onto the body in the direction of the arrows. Pay attention that the corners of the top panel are to be inserted in the upper holes of the body. Insert the top edge of the glass door in the large hole of the top panel. Insert the second 25mm top panel in the panel gap of the body. Assemble the bottom panel to the body by 4 screws.
- Put the bottom panel on the body. Push down when mounting the glass door. Check the alignment of the bottom panel. Check the alignment of the bottom panel. Check the alignment of the bottom panel.
- Slide the 50mm side panel on with the provided screws. Your distributor is happy to help.

DN-49207
Wall Mounting Cabinet 50Hx 600
450mm (19") - 560x400mm (WD)

DIGITUS

- Take the 19" Euro cabinet out of the box.
- Clean the top panel with a soft cloth.
- Slide the bottom plate onto the body in the direction of the arrows. Pay attention that the corners of the bottom plate are to be inserted in the lower holes of the body. Insert the bottom edge of the glass door in the large hole of the bottom plate. Insert the second 25mm bottom panel in the panel gap of the body. Assemble the bottom panel to the body by 4 screws. Check the alignment of the bottom panel. Check the alignment of the bottom panel. Check the alignment of the bottom panel.
- Slide the 50mm side panel on with the provided screws. Your distributor is happy to help.

