

Industrial 8+4 port Gigabit Ethernet PoE switch

DN-651153
EAN 4016032490494



Industrial 8+4-Port Gigabit Ethernet PoE Switch 8 x GE RJ45 + 2 SFP+ Port, PoE

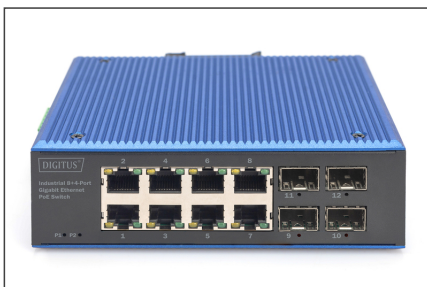
The DN-651153 is a robust 8+4 port Industrial Gigabit Ethernet PoE switch for harsh environments. With non-blocking wire-speed performance, it offers 8x 10/100/1000 BASE-TX RJ45 (up to 30 W PoE each) + 4 x 1000 Base-Fx ports. The IP40 enclosure with redundant power supply is ideal for monitoring, control management and wireless services at -40° to 80°.

8x PoE 10/100/1000 BASE-TX RJ45 + 4 x 1000Base-Fx ports. The IP40 enclosure with redundant power supply is ideal for monitoring, control management and wireless services at -40° to 80°.

- Supports IEEE802.3x flow control, and backpressure
- Supports store-and-forward technology for optimized data transmission
- Automatic speed and half/full duplex detection/adjustment
- 8 port PoE with up to 30 W
- Bandwidth: 52 Gbps
- Packet buffer: 4.1 Mbit
- Packet forwarding size: 38.7 Mbps
- Size of the MAC address table: 8K
- Jumbo frame rate: 9000 byte
- ESD protection: 6 kV (DC)
- EFT protection: 6 kV (DC)
- Metal housing, IP40

- 4 kV lightning protection and surge protection
- Redundant power supply with reverse polarity protection function
- Power supply: 48 to 57 V
- Power consumption: < 10 W
- Removable terminal connection
- Protection class: IP40
- Dimensions: 143.7 x 125 x 47.7 mm
- Weight: 0.76 kg
- Operating temperature: -40 to 80 ° C
- Storage temperature: -40 to 80 ° C
- Humidity: 5% to 95% (non-condensing)
- MTBF: 300,000
- Total PoE budget: 200 W
- Number of ports: 8
- PoE standard: IEEE802.3af (PoE)
- Ethernet speed: Gigabit
- Industrial usage: yes
- Managed: no
- Number of ports (Uplink): 4
- Outdoorsuitable: no
- PoE (Power over Ethernet): yes
- Protection against vandalism: no
- Uplink port connection: SFP
- VLAN: no

More images:





Safety notes

- This product is intended for indoor use only.
- Read all instructions and follow all warnings and instructions on the device.
- Do not place this appliance on an unstable surface (such as a trolley, stand, table, etc.).
- Do not use this appliance near water.
- Do not place this appliance near or above a radiator.
- The housing is equipped with openings for heat dissipation and ventilation. To prevent overheating during operation, the ventilation openings must not be blocked or covered.
- Do not place the appliance on a soft surface (e.g. bed, sofa, blanket, etc.). This will block the ventilation.
- The appliance must not be installed in a closed environment if adequate ventilation is not guaranteed.
- Do not spray any liquids onto the appliance.
- Disconnect the mains plug before cleaning. Do not use any liquid or foam cleaners.
- Clean the appliance with a damp cloth.
- Connect the device according to the power supply on the rating plate.
- To prevent damage to the appliance, it is important that all appliances are properly earthed.
- Do not place any objects on the power cable and lay it in such a way as to avoid tripping hazards.
- Use a surge protector, a regulator or an uninterruptible power supply (UPS) to protect your system from sudden, temporary and reduced power.
- Secure the system cable and mains cable properly and ensure that no objects are pressing on the cable.
- Do not insert any objects into the appliance through the openings in the housing. There is a risk of a short circuit, which can lead to fire or electric shock.
- Do not attempt to repair the appliance yourself. Always contact an authorized customer service centre.
- If any of the following conditions occur, unplug the appliance and send it to an authorized service centre for repair
 - The mains cable, power supply unit or plug for the power supply is damaged or worn;
 - Liquid has penetrated the appliance;
 - The device has been exposed to rain or water;
 - The device has been dropped or the housing has been damaged;
 - The function of the device has obviously changed;
 - The appliance cannot be operated as described in the operating instructions.