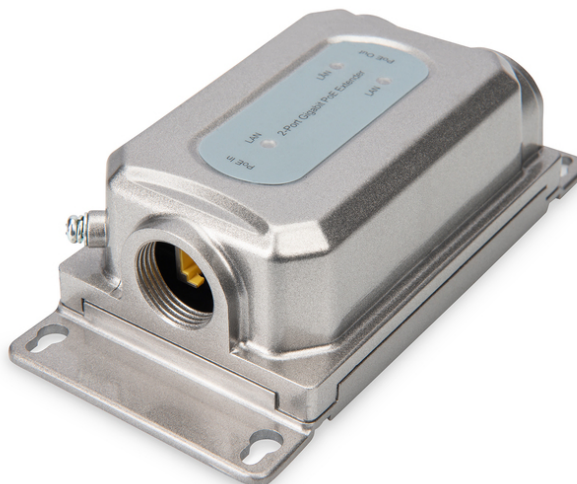


# DIGITUS Outdoor 1 to 2 port UPoE Extender, IEEE803.2af/at 2 Port

DN-95126-1  
EAN 4016032479710



### Outdoor 1 to 2 UPoE Extender IEEE803.2af/at 1 port in 95W, 2 ports out supports 75W/30W/15,4W

DN-95126-1 is a Gigabit IP67 waterproof PoE extender. It Supports one RJ45 (PD) port with IEEE802.3bt Standard up to 95W. Two Ports has PSE function, each supporting up to 30 W PoE output, without configuration, easy plug and play installation.

#### Complies with IEEE802.3af/at/bt Standard

- Supported Standards: IEEE802.3, IEEE802.3u, IEEE802.3ab, IEEE802.3x, IEEE802.3af, IEEE802.3at, IEEE802.3bt
- Ports: 1 x PoE in (up to 95 W), 2x PoE out (10/100/1000 Mb/s)
- PoE Standard: IEEE802.3af/at/bt
- Dimensions(L\*W\*H): 150,73,44 mm

- PoE IN Port: Anode 1/2, Cathode 3/6 or Anode 4/5, Cathode 7/8
- Number of PoE Ports: 2
- Power Supply: PoE
- PD port input 95W max
- PoE Power Output: Per Poert 48-55V DC , max. 30W
- operating Temperature: -20°C to 60°C
- Storage Temperature: -40°C to 80°C
- Surge Protection: Differential mode +/- 4KV, Common mode +/- 6KV
- IP Rating: IP67
- Vandal Proof: IK10

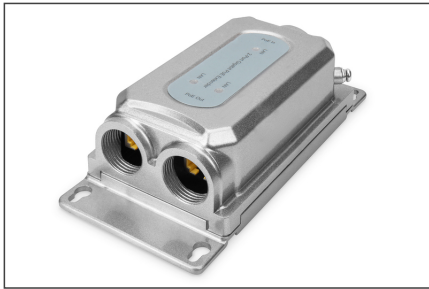
#### Attributes

- Industrial usage: no

Logistics						
	Number (pcs)	Weight (kg)	Depth (cm)	Width (cm)	Height (cm)	cm <sup>3</sup>
Packaging Unit Carton	10	4.75	0.00	0.00	0.00	0.00
Packaging Unit Inside	1	0.48	0.00	0.00	0.00	0.00
Packaging Unit Single	1	0.48	0.00	0.00	0.00	0.00
Net single without Packaging	0	0.00	0.00	0.00	0.00	468.94

#### More images:



**Safety notes**

- This product is intended for indoor use only.
- Read all instructions and follow all warnings and instructions on the device.
- Do not place this appliance on an unstable surface (such as a trolley, stand, table, etc.).
- Do not use this appliance near water.
- Do not place this appliance near or above a radiator.
- The housing is equipped with openings for heat dissipation and ventilation. To prevent overheating during operation, the ventilation openings must not be blocked or covered.
- Do not place the appliance on a soft surface (e.g. bed, sofa, blanket, etc.). This will block the ventilation.
- The appliance must not be installed in a closed environment if adequate ventilation is not guaranteed.
- Do not spray any liquids onto the appliance.
- Disconnect the mains plug before cleaning. Do not use any liquid or foam cleaners.
- Clean the appliance with a damp cloth.
- Connect the device according to the power supply on the rating plate.
- To prevent damage to the appliance, it is important that all appliances are properly earthed.
- Do not place any objects on the power cable and lay it in such a way as to avoid tripping hazards.
- Use a surge protector, a regulator or an uninterruptible power supply (UPS) to protect your system from sudden, temporary and reduced power.
- Secure the system cable and mains cable properly and ensure that no objects are pressing on the cable.
- Do not insert any objects into the appliance through the openings in the housing. There is a risk of a short circuit, which can lead to fire or electric shock.
- Do not attempt to repair the appliance yourself. Always contact an authorized customer service centre.
- If any of the following conditions occur, unplug the appliance and return it to an authorized service centre for repair
- The mains cable, power supply unit or plug for the power supply is damaged or worn;
- Liquid has penetrated the appliance;
- The device has been exposed to rain or water;
- The device has been dropped or the housing has been damaged;
- The function of the device has obviously changed;
- The appliance cannot be operated as described in the operating instructions.

**EU responsible person**

EU based economic operator ensuring the product complies with the required regulations.

ASSMANN Electronic GmbH  
Auf dem Schüffel 3  
Lüdenscheid, Germany  
<https://www.assmann.com>  
[info@assmann.com](mailto:info@assmann.com)