

# DIGITUS LED Monitor Light with Clamp Mount

DA-90415  
EAN 4016032475033



### LED Monitor Bar Light 5W, 250lm, clamp, black

The DIGITUS® LED Light delivers the right lighting conditions in all situations. Choose between cold working light or warm cozy light at different increments and of course in different brightness levels – all conveniently adjustable via touch control. The last light setting remains saved until the next use and does not need to be reconfigured. Installation is carried out with a simple clamp mount on the display, power supply is provided via an enclosed USB connection cable. The minimalist light body sets stylish and sophisticated accents on any desk.

### LED Light with Dimmer, Different Color Temperatures, Touch Control and Clamp Mount

- Dimmer function: 5 levels
- Color temperatures: 5 levels
- Color temperature setting: 5 levels
- LED technology: 48 x SMD 2835 0.2 W
- Configurable color temperature (CCT): 3000 K - 6500 K
- Lumens: 250 lm

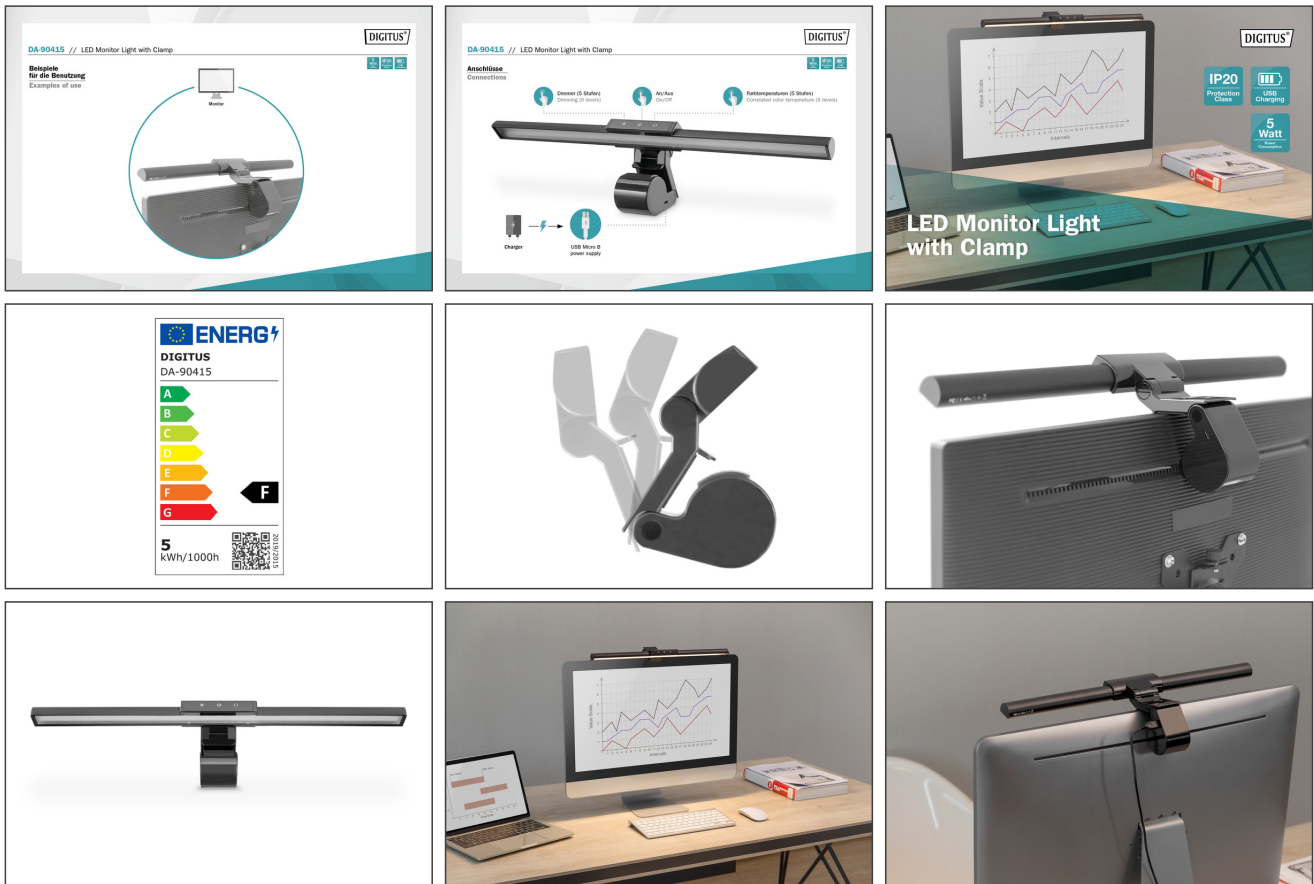
- Central light power: 800 Lux at 30 cm (distance from light source)
- Color rendering index: >80
- Energy efficiency class: F
- Power supply: USB (5 V / 1 A)
- Power supply can be provided via computer, power bank, USB power adapter
- Power consumption: 5 W
- Installation: Clamp mount
- Material: ABS plastic, aluminum alloy
- Protection type: IP20
- Dimensions: W 44.7 x D 8.5 x H 2.5 cm
- Weight: 320 g
- Color: Black
- Style: Monitor lamp

### Package contents

- 1 x LED Monitor Light with Clamp Mount
- 1 x USB connection cable (USB A - Micro B)

Logistics						
	Number (pcs)	Weight (kg)	Depth (cm)	Width (cm)	Height (cm)	cm³
Packaging Unit Carton	20	16.00	51.00	56.00	44.00	125.66
Packaging Unit Inside	1	0.80	0.00	0.00	0.00	0.00
Packaging Unit Single	1	0.80	11.00	50.00	10.50	5.78
Net single without Packaging	0	0.32	8.50	44.70	2.50	949.88

More images:



Safety notes

- Protect the light from impacts and falling. A sudden impact can damage the lamp and lead to electrical problems.
- Do not leave the desk lamp switched on unattended, especially for long periods of time. Always switch the lamp off when you leave the room or when you no longer need it.
- Do not expose the device to rain, moisture, vapors or liquids.
- Do not insert any objects into the device.
- Do not attempt to repair the unit or open the housing without authorization. You risk an electric shock!
- Ensure adequate ventilation to prevent damage due to overheating.
- Dust, moisture, vapors and strong cleaning agents or solvents can cause damage to the device.
- Disconnect the appliance from the power supply and the connected devices before cleaning.
- Clean the device with a dust-free cloth.

EU responsible person

EU based economic operator ensuring the product complies with the required regulations.

ASSMANN Electronic GmbH  
 Auf dem Schüffel 3  
 Lüdenscheid, Germany  
<https://www.assmann.com>  
[info@assmann.com](mailto:info@assmann.com)