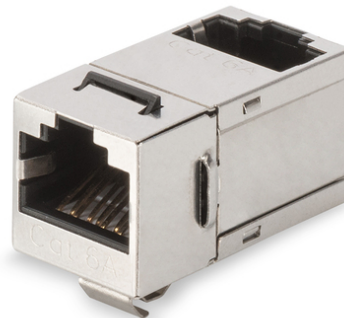


# DIGITUS CAT 6A Class EA Modular Coupler, shielded, angled

DN-93910  
 EAN 4016032445630



### CAT 6A Modular Coupler, shielded RJ45 to RJ45, 90° angled

The modular couplers from DIGITUS® are shielded and provide best performance and link quality for your network. They are equipped with 2 RJ45 sockets with the assignment 1:1 and are therefore suitable for mounting in Patch Panels.

- Transmission properties: Category 6A, Class EA
- Area of application: Up to 500 MHz, 10GBase-T
- Norms: ISO/IEC 11801 2nd Ed., EN 50173-1, EIA/TIA 568-C, 802.3af, 802.3at PoE+
- General properties:
- Suitable for 483 mm (19") cabinet mounting
- 2x RJ45 Female, 8P8C
- 360° shield coverage
- Connection 1:1
- Technical properties:
- Housing material: Zinc die-cast, nickel-plated
- RJ45 female material: ABS UL 94V-0

- RJ45 female contact: Tinned phosphor bronze, 0.5 µ gold-plated contact
- RJ45 shielding: Tinned bronze
- Conductor plate: FR4, UL 94V-0
- Physical properties:
- Insertion force: 30N max. (IEC 60603-7-5)
- Retention strength: 7.7 kg between jack and plug
- Operating temperature: -20 °C to +70 °C (ISO/IEC 11801, EN 50173-1, ANSI/TIA/EIA 568 C)
- Mating cycles female: > 750 acc. to ISO/IEC 11801, IEC 60603-7-5
- Clamp: > 200 acc. to ISO/IEC 11801, IEC 60603-7-5
- Insulation resistance: > 500 MOhm
- Contact resistance: < 20 MilliOhm
- Dielectric strength: 1000 VDC (Contact/Contact), 1500 VDC (Contact/Ground)
- Dielectric strength: 1000 VDC (Contact/Contact), 1500 VDC (Contact/Ground)

Logistics						
	Number (pcs)	Weight (kg)	Depth (cm)	Width (cm)	Height (cm)	cm³
Packaging Unit Carton	600	7.40	29.00	51.00	28.00	41.40
Packaging Unit Inside	100	1.23	25.00	27.00	7.00	4.70
Packaging Unit Single	100	0.01	2.00	4.00	1.50	12.00
Net single without Packaging	0	0.01	0.00	0.00	0.00	0.00