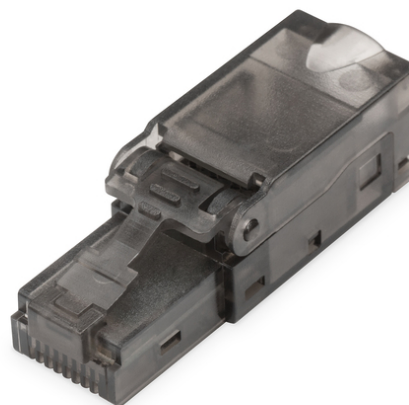


DIGITUS CAT 6A connector for field assembly, unshielded, AWG 27/7 to 22/1, solid and stranded wire

DN-93633
EAN 4016032435617



CAT 6A connector for field assembly, unshielded AWG 27/7 to 22/1, solid and stranded wire

The DIGITUS Professional RJ45 connector for field assembly is a modern and high class RJ45 plug, characterized not only by the simple application, but standing the field assembler every time reliably and quickly at his side. The rapid assembly in only 120 seconds without special tools, as well as the high flexibility, makes it to the perfect choice at any locations. It is suitable for all networks of voice up to 10 Gigabit Ethernet. Satisfied customers, because of fast and cost-saving installation, repairs and maintenance, are the logical consequence of this innovative RJ45 plug. Why complicate things when it can be so easy? See for yourself!

RJ45 connector for field assembly, CAT 6A

- Preassembled protection cap
- Can be assembled in 120 seconds without any special tools
- Secure transmission even with outside interference

- Ideal for network repairs, special length and extensions
- Cross sections AWG 27/7-22/7, AWG 26/1-22/1
- Cable diameter: 6.0-9.5 mm
- Dimensions (W x H x D): 11.65 x 15.8 x 67.8 mm
- --Climatic Characteristics:
- Operating temperature: -40 °C bis +60 °C
- Humidity: 85% RH
- --Standards:
- Gigabit Ethernet acc. to IEEE 802.3
- 10 Gigabit Ethernet acc. to IEEE 802.3an: Adequate for 10 Gigabit Ethernet

Package contents

- 1x plug with dust cap
- 1x sleeve with kink protection and strain relieve
- 1x wire manager with wiring instruction
- 1x mounting instruction

| Logistics | | | | | | |
|------------------------------|--------------|-------------|------------|------------|-------------|-----------------|
| | Number (pcs) | Weight (kg) | Depth (cm) | Width (cm) | Height (cm) | cm ³ |
| Packaging Unit Carton | 500 | 7.00 | 27.00 | 42.00 | 45.00 | 51.00 |
| Packaging Unit Inside | 50 | 0.70 | 9.00 | 20.00 | 25.00 | 4.50 |
| Packaging Unit Single | 1 | 0.01 | 12.00 | 7.00 | 2.00 | 168.00 |
| Net single without Packaging | 0 | 0.01 | 0.00 | 0.00 | 0.00 | 0.00 |

More images:

