

DIGITUS CAT 6A Field Termination Coupler, 500 MHz

DN-93909
EAN 4016032431268



Field Termination Coupler CAT 6A, 500 MHz for AWG 22-26, fully shielded, keyst. design, 26x35x80

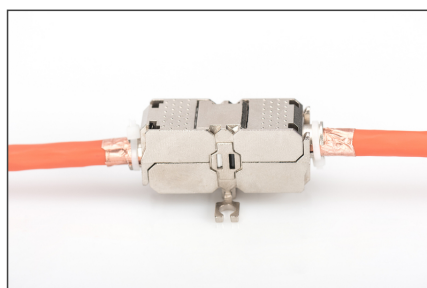
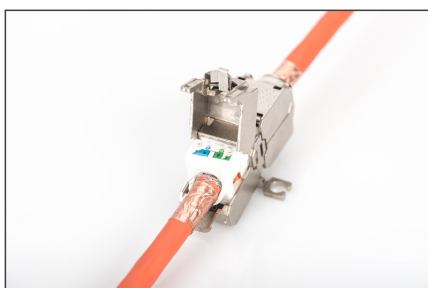
The DIGITUS Professional Field Termination Coupler is used for connecting or extending of twisted pair cables.

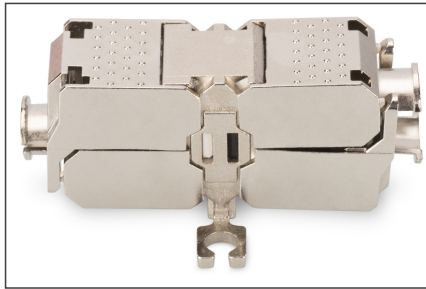
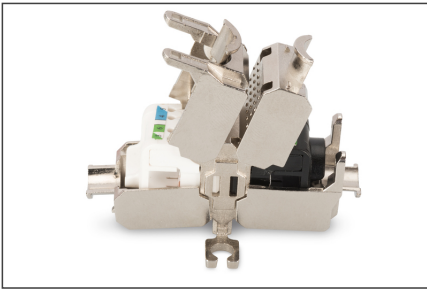
- Transmission properties: Category 6A, Class EA
- Area of application: Up to 500 MHz, 10GBase-T

- Suitable for cables with AWG 22-26 diameter
- Shell: Zinc alloy
- Contacts: Nickel-plated
- shielded
- Keystone Design
- 1 to 1
- Operating temperature: -10 °C to +60 °C

Logistics						
	Number (pcs)	Weight (kg)	Depth (cm)	Width (cm)	Height (cm)	cm ³
Packaging Unit Carton	300	11.50	34.00	24.00	28.00	22.85
Packaging Unit Inside	10	0.38	7.00	17.00	19.00	2.26
Packaging Unit Single	1	0.04	9.00	8.00	3.00	216.00
Net single without Packaging	0	0.04	9.00	8.00	3.00	216.00

More images:



**Manufacturer**

Assmann Electronic GmbH
Auf dem Schüffel 3
58513 Lüdenscheid / Germany
<https://www.assmann.com/>