

DIGITUS External SSD Enclosure, M.2 - USB 3.0

DA-71111

EAN 4016032390541

**SSD Enclosure, M2 USB3.0, M.2 (NGFF), B-Key, Chipset: ASM1153E**

The external SSD enclosure enables external connection of M.2 SATA SSDs via a USB 3.0 port of your PC/notebook. M.2 module type supported: 2280 (80mm), 2260 (60mm), 2242 (42mm) and 2230 (30mm). The M.2 SATA interface provides fast data transfer rates of up to max. 6 Gbit/s. In addition, the SSD enclosure supports hot-plugging and is plug & play capable. This also provides UASP support for improved performance. The slim, premium aluminum housing makes it possible for you to transport your data conveniently and to access it quickly anywhere. It does not require additional power supply, the power supply is ensured via the USB 3.0 port of your PC/notebook.

Enables external connection of M.2 SATA SSDs via a USB 3.0 port of your PC/notebook

- Supports M.2 SATA SSDs
- SATA - data transfer rate of up to max. 6 Gbit/s
- Supports M.2 module type: 2280 (80mm), 2260 (60mm), 2242 (42mm) and 2230 (30mm) with Key B on SATA base
- Chipset: ASM1153E
- USB 3.0 - data transfer rate of up to max. 5 Gbit/s

- Supports UASP (USB Attached SCSI Protocol)
- Power supply via USB 3.0 port, no additional power supply required
- Supports hot-plugging and is plug & play capable
- LED activity indicator
- Premium and high-quality aluminum housing
- Supports: Win 10 (64 bit), 10, 8.1 (64 bit), 8.1, 8 (64 bit), 8, 7 (64 bit), 7, Vista (64 bit), Vista / Mac OS 10.8 and higher, Linux Kernel 2.6 and higher
- Dimensions: L 9.7 x B 3.9 x H 1.0 cm
- Weight: 45 g
- Color: Black

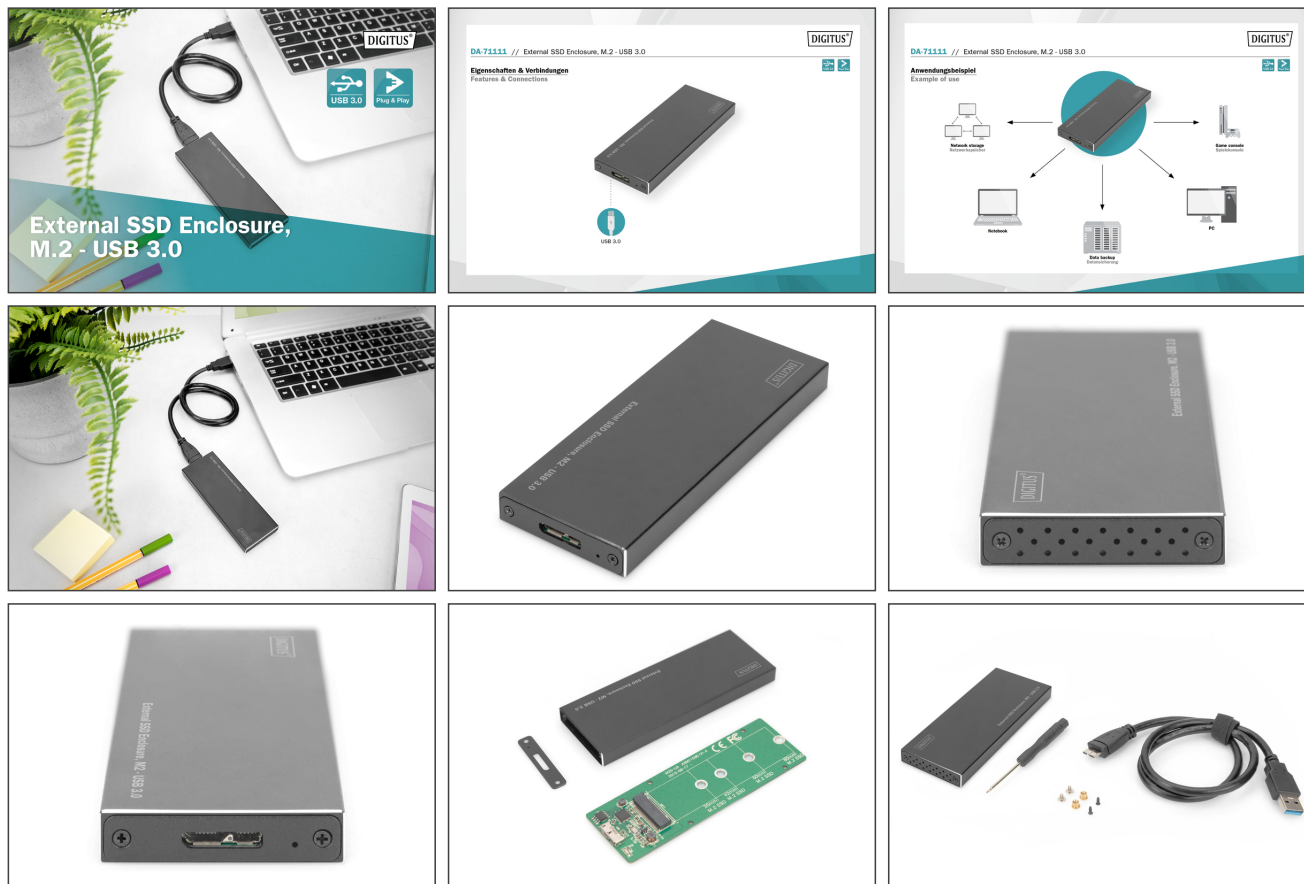
Package contents

- External SSD Enclosure, M.2 - USB 3.0
- USB cable (USB 3.0 Micro A to USB A), 20 cm
- Screw set
- Screwdriver
- User manual

Logistics

	Number (pcs)	Weight (kg)	Depth (cm)	Width (cm)	Height (cm)	cm ³
Packaging Unit Carton	100	8.00	29.20	51.00	29.50	43,931.40
Packaging Unit Inside	1	0.16	12.00	8.00	1.50	144.00
Packaging Unit Single	1	0.16	13.00	15.30	3.70	735.93
Net single without Packaging	0	0.05	4.06	11.00	1.00	44.66

More images:



Safety notes

- Overloading can lead to overheating and damage to the appliance or the connected peripherals.
- If necessary, use an external power supply to ensure stable performance.
- If devices such as external hard disks or printers that require a high power consumption are connected, the device should be used with an external power supply. Otherwise, the device could be overloaded or functional problems could occur.
- Do not expose the device to rain, moisture, vapors or liquids.
- Do not insert any objects into the device.
- Do not attempt to repair the unit or open the housing without authorization. You risk an electric shock!
- Ensure adequate ventilation to prevent damage due to overheating.
- Dust, moisture, vapors and strong cleaning agents or solvents can cause damage to the device.
- Disconnect the appliance from the power supply and the connected devices before cleaning.
- Clean the device with a dust-free cloth.

EU responsible person

EU based economic operator ensuring the product complies with the required regulations.

ASSMANN Electronic GmbH
Auf dem Schüffel 3
Lüdenscheid, Germany
<https://www.assmann.com>
info@assmann.com