

DIGITUS LED Lighting

DN-19-LIGHT-3
EAN 4016032361053



LED lighting with IR sensors, with magnetic strip including power adapter

The LED Lighting is flexible usable due to its compact design and the mounting with magnets. It can be mounted horizontally or vertically inside of your 483 mm (19") cabinet and ensures an optimized lighting via efficient LED lights, which have the maximum light power from the start, without warming phase. The two different modes (adjustable with a switch) offer a particularly user friendly handling. The automatic door mode will switch on the light, due to the sensor, automatically when you open the door of your 483 mm (19") cabinet and also switch off the light when the door is being closed. Alternatively you can use the touch mode for manual use. In this case just wave in front of the sensor one time for switching on the light and a second time to switch off the light. A power adapter is included in the standard delivery content, therefore the LED Lighting is usable immediately.

The perfect light source for the inside of your enclosure. Installable horizontally or vertically via magnets.

- Nominal input voltage: 100-240 V
- Input frequency: 50/60 Hz
- Operating voltage: DC 12 V, 1000 mA
- Performance: 12 W

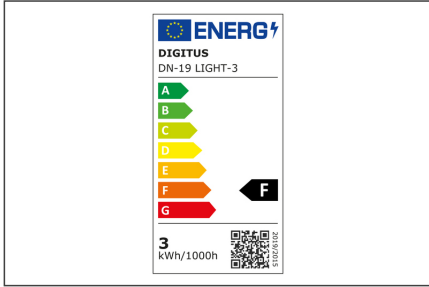
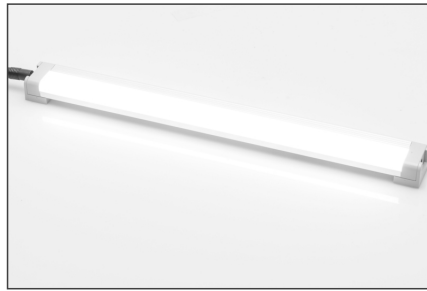
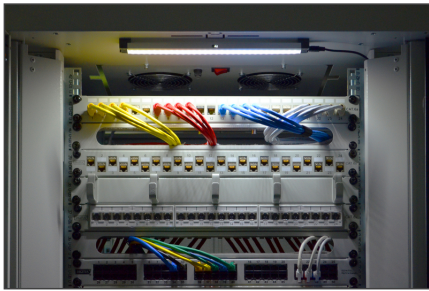
- Control: IR sensor
- Power adapter plug: CEE 7/16 (Type C) Europlug
- LED DC Input connector: 3.5 mm; 1,5 m length
- Maximum total current draw: 250 mA @ 220-240 V
- Lum. Flux: 223 lm
- Light source: 6500K LED
- Consumption in kWh/1000 h: 0.003 kWh
- Durability in hours: 30000
- Elevation (above MSL) operating storage: 0-3000 m / 0-15 000 m
- Storage-/Operation temperature: -25 °C to +65 °C / -20 °C to +45 °C
- Humidity operating storage: 0-95 % RH Non-condensing 0-95 % RH Non-condensing
- Aluminum housing
- Color: Black plastic & grey aluminum
- CE & ROSH compliant
- Start-up time until 60% of max. luminous flux has been reached: <1 sec.

Package contents

- LED Lighting
- Power adapter
- Magnet strip

Logistics						
	Number (pcs)	Weight (kg)	Depth (cm)	Width (cm)	Height (cm)	cm³
Packaging Unit Carton	20	7.00	36.00	52.00	37.00	69.26
Packaging Unit Inside	1	0.35	2.80	30.40	1.60	136.19
Packaging Unit Single	1	0.35	2.80	30.40	1.60	136.19
Net single without Packaging	0	0.25	2.80	30.40	1.60	136.19

More images:



Safety notes

- When installing and using the accessory product for network cabinets, observe the respective safety instructions of the manufacturer or the cabinet system in which you want to use the accessory.

EU responsible person

EU based economic operator ensuring the product complies with the required regulations.

ASSMANN Electronic GmbH
 Auf dem Schüffel 3
 Lüdenscheid, Germany
<https://www.assmann.com>
info@assmann.com