

# DIGITUS Cat.6A U/UTP installation cable, 500 m, simplex, Eca

DK-1613-A-VH-5  
EAN 4016032344209



### CAT 6A U-UTP installation cable, 500 MHz Eca (EN 50575), AWG 23/1, 500 m drum, sx, blue

The Digitus Cat 6A U/UTP installation cable is designed for use in the structured data center and the building cabling according to ISO/IEC 11801, DIN EN 50288-11-1, DIN EN 50173, IEC 60332-1. The cable is perfectly suitable for the transmission of both analog and digital data and also supports POE and POE+.

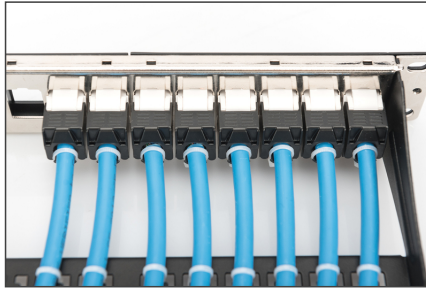
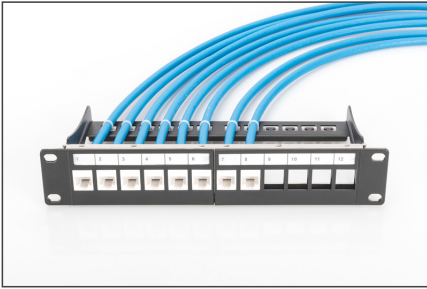
#### Future-oriented standards and high-end quality for your network.

- Physical properties:
- Conductor: Bare annealed copper, olid AWG 23/1
- Insulation: HD-PE (High Density Polyethylene)
- Total number of insulated conductors: 8, twisted in 4 pairs
- Color code: Blue-white, orange-white, green-white, brown-white
- Individual pair shield: None
- Overall shielding: None
- Outer sheath: Eca to B2ca acc. to EN 50575; LSZH
- Outer sheath diameter (nominal): 0,5 mm (Eca); 0,6 mm (Dca); 1,2 mm (Cca); 1,4 mm (B2ca)
- Outer sheath color: Light blue (RAL 5012)
- Mechanical properties:
- Tensile loading: 150N max.
- Dynamic bending radius: 8x AD mm min.
- Static bending radius: 4x AD mm min.
- Shipping- and storage temperature range: -20 °C up to +60 °C

- Operating temperature range: -20 °C up to +75 °C
- Installation temperature range: 0 °C up to +50 °C
- Overall diameter Simplex (nominal): 7,1 mm (Eca); 7,3 mm (Dca); 7,4 mm (Cca); 7,6 mm (B2ca)
- Weight (kg/km): 53 kg (Eca); 54 kg (Dca); 55 kg (Cca); 56 kg (B2ca)
- Electrical properties:
- Impedance: 100±5Ohm @ 1 - 600MHz
- Capacitance: 40 pF/m nominal @ 1 KHz
- Capacitance unbalance (pair-ground): 1.6 pF/m max. @ 1 KHz
- Insulation resistance: 5 GOhm x km min.
- DC loop resistance: 147 Ohm/km max. (2% max. resistance unbalance)
- Voltage resistance: 72 Vdc max.
- Coupling attenuation: CA-Type 2
- Signal propagation delay: 450 nS/100 m max.
- Propagation delay: 10 nS/100 m max.
- Separating class: "c" acc. to EN 50174-2
- NVP: 70%
- Assortment: Twisted Pair Installation Cables
- Category: CAT 6A
- Shielding: U-UTP, unshielded
- CPR: Eca
- Length: 500 m
- Color: light-blue
- Jacket: LSOH
- Structure: 4 x 2 AWG 23/1, solid twisted pair

Logistics						
	Number (pcs)	Weight (kg)	Depth (cm)	Width (cm)	Height (cm)	cm³
Packaging Unit Carton	16	27.50	50.00	50.00	22.00	55.00
Packaging Unit Inside	1	27.50	50.00	50.00	22.00	55.00
Packaging Unit Single	1	27.50	50.00	50.00	22.00	55.00
Net single without Packaging	0	27.50	0.00	0.00	0.00	0.00

More images:



**DIGITUS**

- AWG 23/1
- 500 MHz
- 10 Gbit Ethernet
- CAT 6a
- 20°/175°
- LSZH
- Eca

**CAT 6<sub>a</sub> U/UTP Installation Cable, 500m, Simplex, E<sub>ca</sub>**

**DIGITUS**

**DK-1613-A-VH-S // CAT 6<sub>a</sub> U/UTP Installation Cable, 500m, Simplex, E<sub>a</sub>**

Anwendungsbeispiel  
Example of use

DS-90C03 DS-90C03

**DIGITUS**

**DK-1613-A-VH-S // CAT 6<sub>a</sub> U/UTP Installation Cable, 500m, Simplex, E<sub>a</sub>**

Kabelquerschnitt  
Cable cross section

Aufwärtiger Twisted pair  
Co-Braid Co-Wire  
Abwärts Twisted pair

**DIGITUS**

Produktinformationen Product information	Physische Spezifikationen Physical Properties
<b>Herstellername:</b> DIGITUS Professional	<b>Hersteller:</b> DIGITUS Professional
<b>Produktname:</b> CAT 6 <sub>a</sub> U/UTP Installation Cable, 500m, Simplex, E <sub>ca</sub>	<b>Produktname:</b> CAT 6 <sub>a</sub> U/UTP Installation Cable, 500m, Simplex, E <sub>ca</sub>
<b>Teilenummer:</b> 1613-A-VH-S	<b>Teilenummer:</b> 1613-A-VH-S
<b>Material:</b> PVC	<b>Material:</b> PVC
<b>Abmessungen:</b> 12.5mm x 5.0mm x 1.0mm	<b>Abmessungen:</b> 12.5mm x 5.0mm x 1.0mm
<b>Gewicht:</b> 1.5kg	<b>Gewicht:</b> 1.5kg

**DIGITUS**

**Leistungsmerkmale Transmission Properties**

Impedanz	AWG	MAX. NEXT	ACR	PS-ACR	AL	SLR/PL	PS-SLR/PL
100	23	20.0	20.0	20.0	20.0	20.0	20.0
100	23	20.0	20.0	20.0	20.0	20.0	20.0
100	23	20.0	20.0	20.0	20.0	20.0	20.0
100	23	20.0	20.0	20.0	20.0	20.0	20.0
100	23	20.0	20.0	20.0	20.0	20.0	20.0

**intertek**

**Intertek**

ISO 9001 Certified  
ISO 14001 Certified  
ISO 13485 Certified

**DIGITUS**

100m, 500m, 1000m, 1500m, 2000m, 2500m, 3000m, 3500m, 4000m, 4500m, 5000m, 5500m, 6000m, 6500m, 7000m, 7500m, 8000m, 8500m, 9000m, 9500m, 10000m

CAT 8.2  
CAT 7  
CAT 7 S/FTP  
CAT 6  
CAT 6

**DIGITUS**

Category	Shielding	Performance
B2, C <sub>ca</sub>	Shielded	1+
D <sub>ca</sub>	Shielded	3
E <sub>ca</sub>	Shielded	3

