

DIGITUS Cat.6A U/UTP installation cable, 305 m, simplex, Eca

DK-1613-A-VH-305
EAN 4016032344100



CAT 6A U-UTP installation cable, 500 MHz Eca (EN 50575), AWG 23/1, 305 m drum, sx, blue

The Digitus® Cat.6A U/UTP installation cable is characterized by the following cable construction 4x2x AWG23/1 and reaches a transmission frequency up to 500 MHz. The halogen free cable jacket is conform to the standard IEC 60332-1, FRNC-B, LSZH-1 and CPR Euro class Eca. The cable is suitable for building structured cabling in the secondary and tertiary area. Compliant with the following standards ISO/IEC 11801, DIN EN 50173, DIN EN 50288-11-1.

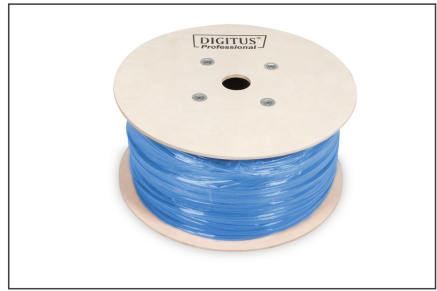
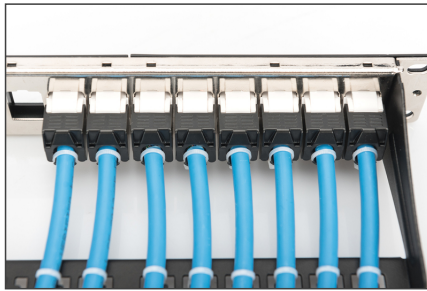
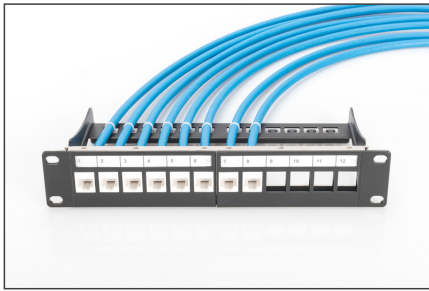
Future-oriented standards and high-end quality for your network.

- Physical properties:
- Conductor: Bare annealed copper, olid AWG 23/1
- System/s of AVCP: AVCP 3
- Insulation: HD-PE (High Density Polyethylene)
- Total number of insulated conductors: 8, twisted in 4 pairs
- Color code: Blue-white, orange-white, green-white, brown-white
- Individual pair shield: None
- Overall shielding: None
- Outer sheath: Eca to B2ca acc. to EN 50575; LSZH
- Outer sheath diameter (nominal): 0,5 mm (Eca); 0,6 mm (Dca); 1,2 mm (Cca); 1,4 mm (B2ca)
- Outer sheath color: Light blue (RAL 5012)
- Mechanical properties:
- Tensile loading: 150N max.
- Dynamic bending radius: 8x AD mm min.
- Static bending radius: 4x AD mm min.

- Shipping- and storage temperature range: -20 °C up to +60 °C
- Operating temperature range: -20 °C up to +75 °C
- Installation temperature range: 0 °C up to +50 °C
- Overall diameter Simplex (nominal): 7,1 mm (Eca); 7,3 mm (Dca); 7,4 mm (Cca); 7,6 mm (B2ca)
- Weight (kg/km): 53 kg (Eca); 54 kg (Dca); 55 kg (Cca); 56 kg (B2ca)
- Electrical properties:
- Impedance: 100±50hm @ 1 - 600MHz
- Capacitance: 40 pF/m nominal @ 1 KHz
- Capacitance unbalance (pair-ground): 1.6 pF/m max. @ 1 KHz
- Insulation resistance: 5 GOhm x km min.
- DC loop resistance: 147 Ohm/km max. (2% max. resistance unbalance)
- Voltage resistance: 72 Vdc max.
- Coupling attenuation: CA-Type 2
- Signal propagation delay: 450 nS/100 m max.
- Propagation delay: 10 nS/100 m max.
- Separating class: "c" acc. to EN 50174-2
- NVP: 70%
- Assortment: Twisted Pair Installation Cables
- Category: CAT 6A
- Shielding: U-UTP, unshielded
- CPR: Eca
- Length: 305 m
- Color: light-blue
- Jacket: LSOH
- Structure: 4 x 2 AWG 23/1, solid twisted pair

Logistics						
	Number (pcs)	Weight (kg)	Depth (cm)	Width (cm)	Height (cm)	cm³
Packaging Unit Carton	1	17.00	39.00	39.00	27.00	41.10
Packaging Unit Inside	1	17.00	39.00	39.00	27.00	41.10
Packaging Unit Single	1	17.00	39.00	39.00	27.00	41.10
Net single without Packaging	0	17.00	0.00	0.00	0.00	0.00

More images:



CAT 6_A U/UTP Installation Cable, 305 m, Simplex, E_{ca}

- AWG 23/1
- 500 MHz
- 10 Gbit Ethernet
- CAT 6_A (see spec)
- 207/75°
- LSZH
- E_{ca} (see spec)
- CPH class

DK-1613-A-VH-305 // CAT 6_A U/UTP Installation Cable, 305 m, Simplex, E_{ca}

Anwendungsbeispiel
Example of use

DK-1613-A-VH-305 // CAT 6_A U/UTP Installation Cable, 305 m, Simplex, E_{ca}

Kabelquerschnitt
Cable cross section

Produktinformationen Product Information

Bestellnummer	DK-1613-A-VH-305	Produktname	CAT 6 _A U/UTP Installation Cable, 305 m, Simplex, E _{ca}
Hersteller	DIGITUS	Material	100% Polypropylen (PP) / 100% Polypropylene (PP)
Material	100% Polypropylen (PP) / 100% Polypropylene (PP)	Farbe	Blau / Blue
Abmessungen	305 m / 1000 ft	Nettogewicht	~ 1,5 kg / ~ 3,3 lb

Technische Eigenschaften Technical Properties

Standard	ISO/IEC 61883	Leistungsfähigkeit	10 Gbit Ethernet
Leistungsfähigkeit	10 Gbit Ethernet	Temperaturbereich	-20°C bis +75°C
Temperaturbereich	-20°C bis +75°C	Flammverhalten	LSZH

Mechanische Eigenschaften Mechanical Properties

Leistungsfähigkeit	10 Gbit Ethernet	Temperaturbereich	-20°C bis +75°C
Temperaturbereich	-20°C bis +75°C	Flammverhalten	LSZH

Leistungsmerkmale Transmission Properties

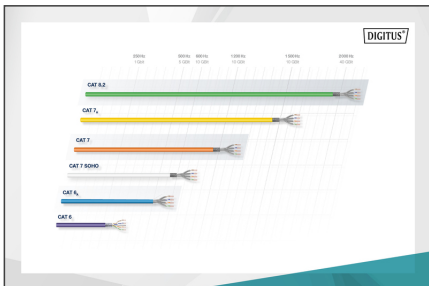
Impedanz	AWG	ISO	IEC	ANSI	ISO	IEC	ANSI	ISO	IEC	ANSI
100	23	100	100	100	100	100	100	100	100	100
100	23	100	100	100	100	100	100	100	100	100
100	23	100	100	100	100	100	100	100	100	100
100	23	100	100	100	100	100	100	100	100	100
100	23	100	100	100	100	100	100	100	100	100

intertek

intertek logo

intertek logo

intertek logo



DIGITUS

CEP (Cable Emission Protection) / **CEP** (Cable Emission Protection)

B2 (Blue) / **C_{ca}** (Green) / **D_{ca}** (Yellow) / **E_{ca}** (Orange)

1+ (Blue) / **3** (Green) / **3** (Yellow) / **3** (Orange)

C_{ca} / **s1a** / **d1** / **a1**

