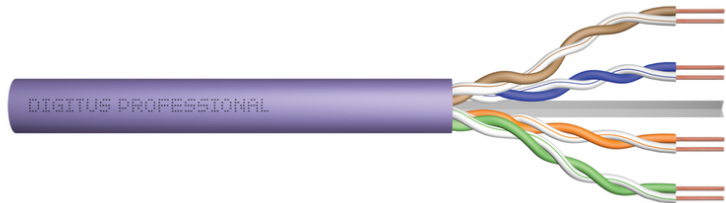


DIGITUS Cat.6 U/UTP installation cable, 500 m, Eca

DK-1613-VH-5
EAN 4016032343660



CAT 6 U-UTP installation cable, 250 MHz Eca (EN 50575), AWG 23/1, 500 m drum, sx, purple

The Digitus Cat 6 U/UTP installation cable is designed for use in the structured data center and the building cabling according to ISO/IEC 11801, DIN EN 50288-6-1, DIN EN 50173, IEC 60332-1. The cable is perfectly suitable for the transmission of both analog and digital data and also supports POE and POE+.

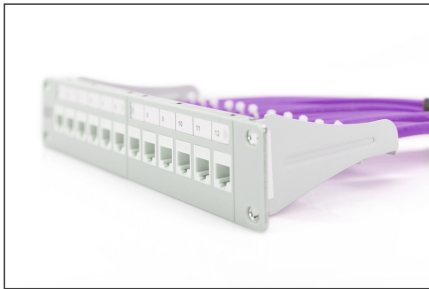
Future-oriented standards and high-end quality for your network.

- Physical properties:
- Conductor: Bare annealed copper, solid AWG 23/1
- System/s of AVCP: AVCP 3
- Insulation: HD-PE (High Density Polyethylene)
- Total number of insulated conductors: 8, twisted in 4 pairs
- Color code: Blue-white, orange-white, green-white, brown-white
- Individual pair shield: None
- Overall shielding: None
- Outer sheath: Eca to B2ca acc. to EN 50575; LSZH
- Outer sheath diameter (nominal): 0,5 mm (Eca); 0,6 mm (Dca); 1,0 mm (Cca); 1,0 mm (B2ca)
- Outer sheath color: Purple (RAL 4005)
- Mechanical properties:
- Tensile loading: 150N max.
- Dynamic bending radius: 8x AD mm min.
- Static bending radius: 4x AD mm min.
- Shipping- and storage temperature range: -20 °C up to +60 °C

- Operating temperature range: -20 °C up to +75 °C
- Installation temperature range: 0 °C up to +50 °C
- Overall diameter Simplex (nominal): 6,1 mm (Eca); 6,3 mm (Dca); 6,8 mm (Cca); 6,8 mm (B2ca)
- Weight (kg/km): 41 kg (Eca); 42 kg (Dca); 44 kg (Cca); 44 kg (B2ca)
- Electrical properties:
- Impedance: 100±5Ohm @ 1 - 250MHz
- Capacitance: 40 pF/m nominal @ 800 Hz
- Capacitance unbalance (pair-ground): 1.5 pF/m max. @ 1 KHz
- Insulation resistance: 5 GOhm x km min.
- DC loop resistance: 147 Ohm/km max. (2% max. resistance unbalance)
- Voltage resistance: 72 Vdc max.
- Coupling attenuation: CA-Type 3
- Signal propagation delay: 535 nS/100 m max.
- Propagation delay: 20 nS/100 m max.
- Separating class: „b“ acc. to EN 50174-2
- NVP: 69%
- Assortment: Twisted Pair Installation Cables
- Category: CAT 6
- Shielding: U-UTP, unshielded
- CPR: Eca
- Length: 500 m
- Color: violet
- Jacket: LSOH
- Structure: 4 x 2 AWG 23/1, solid twisted pair

Logistics						
	Number (pcs)	Weight (kg)	Depth (cm)	Width (cm)	Height (cm)	cm ³
Packaging Unit Carton	1	22.00	39.50	38.00	27.50	41,277.50
Packaging Unit Inside	1	22.00	0.00	0.00	0.00	0.00
Packaging Unit Single	1	19.00	37.00	37.00	31.00	42.40
Net single without Packaging	0	19.00	33.00	34.00	12.00	13.50

More images:



CAT 6 U/UTP Installation Cable, 500m, Simplex, E_{ca}

DK-1613-VH-5 // CAT 6 U/UTP Installation Cable, 500m, Simplex, E_{ca}

Anwendungsbeispiel
Example of use

DK-1613-VH-5 // CAT 6 U/UTP Installation Cable, 500m, Simplex, E_{ca}

Kabelquerschnitt
Cable cross section

Produktinformation Product Information

Herstellername / Manufacturer	Digitus (China, Taiwan, Hong Kong, Thailand, Vietnam)	Umwelt / Environment	RoHS-konform / RoHS compliant
Artikelnummer / Article number	DK-1613-VH-5 (Simplex, 500m, 23 AWG, LSZH, Eca, CPR class)	Abmessung / Dimension	20° to 75° C
Artikelname / Article name	CAT 6 U/UTP Installation Cable, 500m, Simplex, Eca	Material / Material	LSZH

Physikalische Spezifikationen Physical Properties

Leitungsstruktur / Conductor structure	Simplex	Leitungsstruktur / Conductor structure	Simplex
Leitungsstruktur / Conductor structure	Simplex	Leitungsstruktur / Conductor structure	Simplex

Elektrische Eigenschaften Electrical Properties

Leitungsstruktur / Conductor structure	Simplex	Leitungsstruktur / Conductor structure	Simplex
--	---------	--	---------

Mechanische Eigenschaften Mechanical Properties

Leitungsstruktur / Conductor structure	Simplex	Leitungsstruktur / Conductor structure	Simplex
--	---------	--	---------

Leitungsstruktur Transmission Properties

AWG	AWG	AWG	AWG	AWG	AWG	AWG	AWG	AWG	AWG
24	24	24	24	24	24	24	24	24	24
23	23	23	23	23	23	23	23	23	23
22	22	22	22	22	22	22	22	22	22
21	21	21	21	21	21	21	21	21	21
20	20	20	20	20	20	20	20	20	20
19	19	19	19	19	19	19	19	19	19
18	18	18	18	18	18	18	18	18	18
17	17	17	17	17	17	17	17	17	17
16	16	16	16	16	16	16	16	16	16

CEC-Bestimmungen

CEC-Bestimmungen	Bestimmungen	Bestimmungen	Bestimmungen
------------------	--------------	--------------	--------------

Leitungsstruktur

Leitungsstruktur	Leitungsstruktur	Leitungsstruktur	Leitungsstruktur
------------------	------------------	------------------	------------------

Leitungsstruktur

Leitungsstruktur	Leitungsstruktur	Leitungsstruktur	Leitungsstruktur
------------------	------------------	------------------	------------------

